



Greenshine



SUPERA

Cost Effective Solar Lighting Solutions

SUPERA | GENERAL SPECIFICATIONS



Greenshine

Light Fixture (GS-LED-290D)

Luminaire Input Voltage	DC 12V 24V
Power Consumption	30W 40W 60W 80W
Lumen	3929 5288 7051 9488 lumens
Color Temperature	3000-4000 K
IES Lighting Type	Type III
Material	Die-cast aluminum



Solar Panel (1 or 2 Units)

180W

Rating Power	180 W
Maximum Power Voltage	18.95 V
Maximum Power Current	9.50 A
Open Circuit Current	22.74 V
Short Circuit Current	9.98 A
Size	58.5" x 27"
Weight	23.4 lb

Battery (1 or 2 Units)

Battery Type	GEL Deep Cycle Lead-Acid
Operating Voltage	12 V
Capacity	150 Ah at 20 hr-rate to 1.75 V per cell at 77°F
Dimensions	16(L)×7(W)×9.2(H) (in)
Expected Life	5 ~ 7 years

Solar Charger

Operating Voltage	12 V/24 V auto recognition
Max. Charge / Load Current	5 A/ 10 A/ 20 A (different models)
Night / Day Detection	2.5 V – 10 V
IP Class	IP68

Pole

Height	26 ft
Diameter	6 3/4" at the bottom, 4" at the top
Thickness	5/32"
Material	Galvanized Steel
Finishing	Powder Coating



SUPERA | GENERAL SPECIFICATIONS



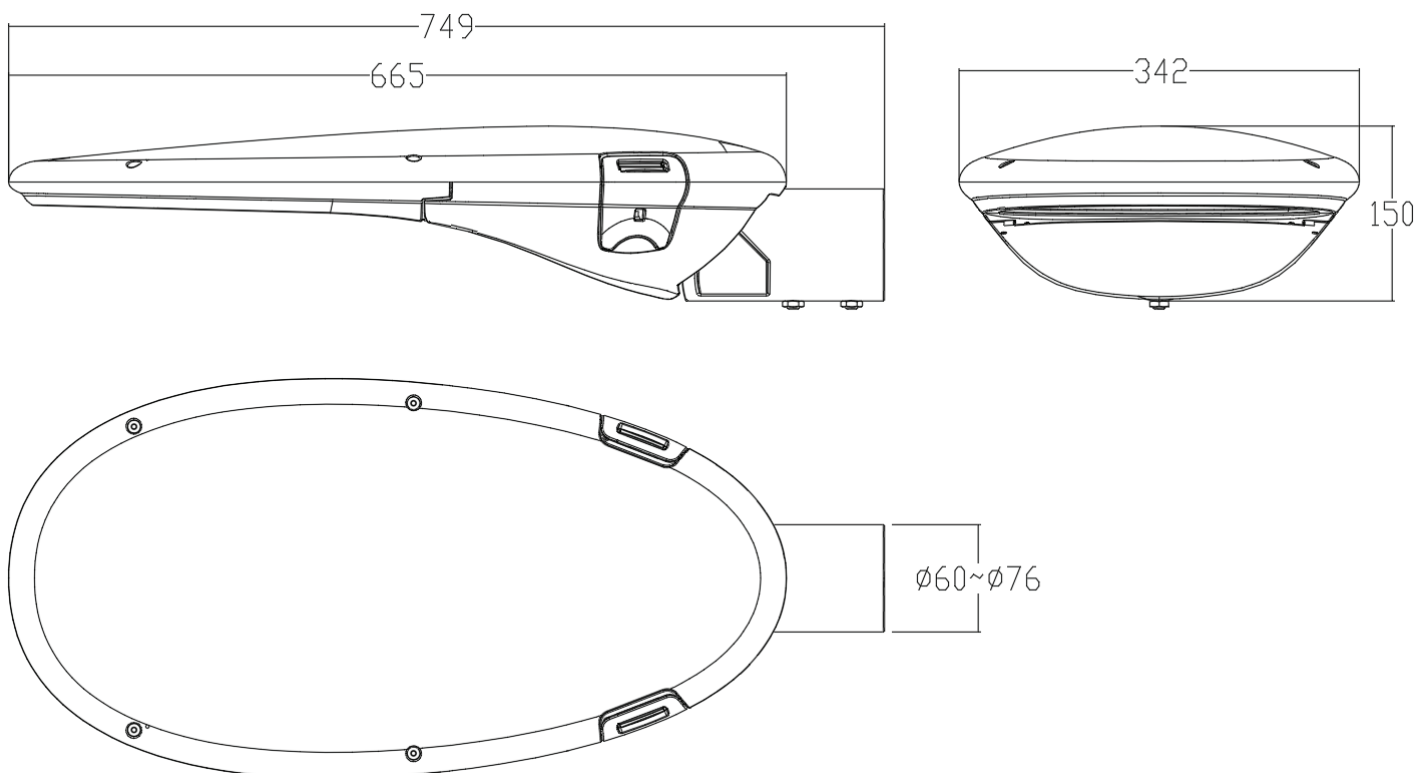
Greenshine

SPECIFICATIONS

Luminaire Input Voltage	DC 12V 24V
Power Consumption	30W 40W 60W 80W
Lumen Output	3929 5288 7051 9488 lumens
Color Temperature	3000-4000 K
IES Lighting Type	Type III
Material	High pressure die-cast aluminum
Lens	5mm toughened glass, optical grade PMMA
IP Class	IP 65
Insulation	Class I
Operating Temperature	-30°C ~+50°C/ -22°F ~+122°F
CRI	≥70

Weight: 8.3 kg | 18.3 lb

DIMENSIONS



GREENSHINE SOLAR PANEL

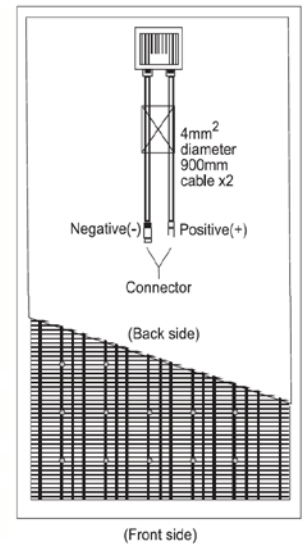
Solar Powered LED Lighting System



Greenshine

OVERVIEW

- Mono-Crystalline solar cells
- Aluminum frame with a unique design to withstand strong winds
- Highly resistant tempered glass
- Multilayer EVA encapsulation with triple layer back sheet
- 25-year power output warranty: 5 years/95%, 12 years/90%, 25 years/80%.



Rating Power

110W

180W

Product Tolerance	± 3%	± 3%
Maximum Power Voltage	17.60V	18.95V
Maximum Power Current	6.25A	9.50A
Open Circuit Voltage	21.7 V	22.74 V
Short Circuit Current	6.71 A	9.98 A
Frame	Anodized aluminum, 4mm thickness	
Dimensions	1208mm x 682mm 47.5" x 27" 13kg 29.5lb	1486mm x 682mm 58.5" x 27" 10.6kg 23.4lb
Test Temperature	25°C 77°F, 1000w/m², Air Mass 1.5	
Junction Box / Wiring	IP65 Junction box with 900mm cable with MC4 connectors	



GREENSHINE GEL-TYPE BATTERY

Solar Powered LED Lighting System



Greenshine

OVERVIEW

GEL deep cycle battery with a 12 years floating design life is especially designed for frequent cyclic discharge under extreme temperature.

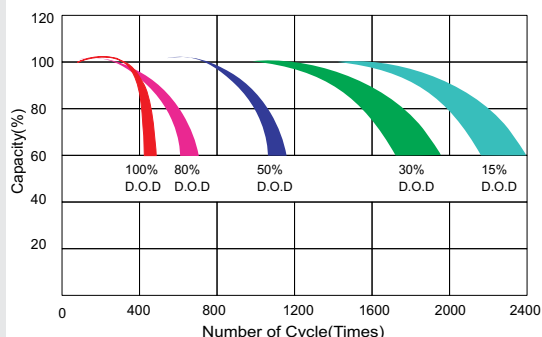


	GS-GEL-H80	GS-GEL-H120	GS-GEL-H150	GS-GEL-H200
Cells per unit	6	6	6	6
Voltage per unit	12V	12V	12V	12V
Capacity	80Ah @ 20hr-rate to 1.75V per cell @ 25°C / 77°F	120Ah @ 20hr-rate to 1.75V per cell @ 25°C / 77°F	150Ah @ 20hr-rate to 1.75V per cell @ 25°C / 77°F	200Ah @ 20hr-rate to 1.75V per cell @ 25°C / 77°F
Weight	26kg / 58lb	38kg / 84lb	46kg / 100lb	59.2kg / 131.5lb
Dimensions L x W x H	330 x 172 x 214(mm) 13" x 7" x 8.5"	406 x 173 x 233(mm) 16" x 7" x 9.2"	483 x 170 x 240(mm) 19" x 6.7" x 9.5"	522 x 240 x 218(mm) 20.5" x 9.44" x 8.7"
Max Discharge Current	800A (5 Sec)	1200A (5 Sec)	1500A (5 Sec)	2000A (5 Sec) ²
Operating Temp. range	-40°C~60°C -40°F~140°F			
Flot Charging Voltage	13.6 to 13.8 VDC / unit average at 25°C / 77°F			
Recommended max. charging current	16A	24A	30A	40A
Self-discharge	Valve Regulated Lead Acid can be stored for more than 6 months at 25°C/77°F. Self-discharge ratio less than 3% per month at 25°C/77°F. Please charge batteries before using.			
Equalization and cycle service	14.6 to 14.8 VDC / unit average at 25°C / 77°F			
Terminal type	5ft cooper wire leads from the battery case			

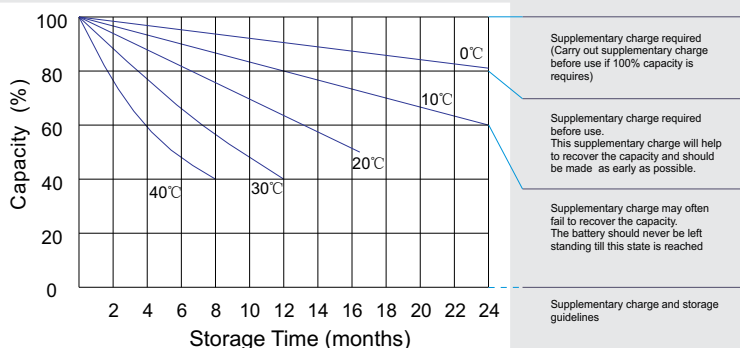
GREENSHINE GEL-TYPE BATTERY



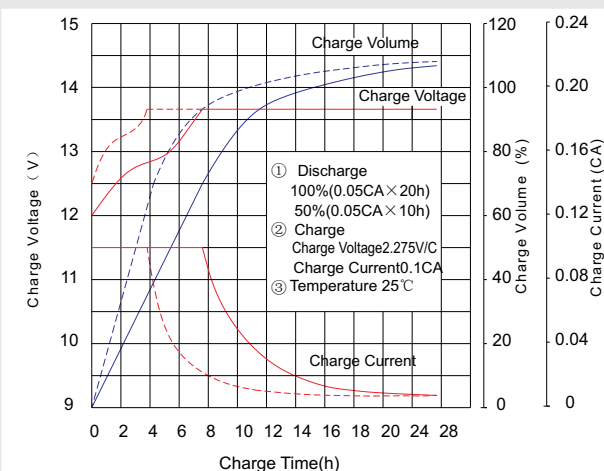
Life characteristics of cyclic use



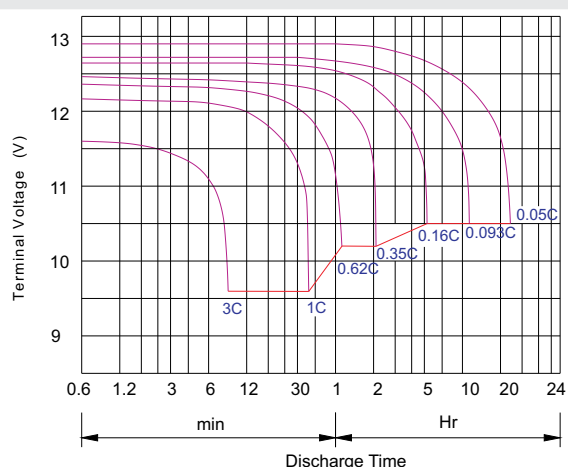
Storage characteristic



Charge characteristic curve for cyclic use



Discharge characteristic curve



Capacity Factors With Different Temperature

Battery Type		-20°C	-10°C	0°C	5°C	10°C	20°C	25°C	30°C	40°C	45°C
GEL Battery	6V&12V	50%	70%	83%	85%	90%	98%	100%	102%	104%	105%
	2V	60%	75%	85%	88%	92%	99%	100%	103%	105%	106%
AGM Battery	6V&12V	46%	66%	76%	83%	90%	98%	100%	103%	107%	109%
	2V	55%	70%	80%	85%	92%	99%	100%	104%	108%	110%

Discharge Current VS. Discharge Voltage

Final Discharge Voltage V /cell	1.75V	1.70V	1.60V
Discharge Current (A)	(A) ≤ 0.2C	0.2C < (A) < 1.0C	(A) ≥ 1.0C

Charge the batteries at least once every six months, if they are stored at 25°C.

Charging Method:

Constant Voltage	-0.2Cx2h+14.4-14.7Vx24h, Max. Current 0.2C
Constant Current	-0.2Cx2h+0.1Cx12h
Fast	-0.2Cx2h+0.2Cx6h

Bolt	M5	M6	M8
Terminal	F3 F4 F13 F18 T25 T26	F8 F11 F12-1 F15	F5 F9 F10 F12 F14 F16
Torque	6-7N-m	8-10N-m	10-12N-m

Maintenance & Cautions

Cycle service

- ※ Avoid battery over discharge, especially battery series connection use.
- ※ Charged with recommend voltage, ensure battery can be full recharged.
- In general, recharge capacity should be 1.1-1.15 times discharge capacity.
- ※ Effect of temperature on cycle charge voltage: -4mV/°C/Cell.
- ※ There are a number of factors that will affect the length of cyclic service.
- The most significant are depth of discharge, ambient temperature, discharge rate, and the manner in which the battery is recharged.
- Generally speaking, the most important factors is depth of discharge.

GREENSHINE CONTROLLER

Solar Powered LED Lighting System



FEATURES

- Corrosion-proof epoxy-encapsulated PCB (IP68)
- Four-stage battery charging (main, float, boost, equalization)
- Temperature compensated
- Automatic system voltage recognition (12V/24V)
- Customized by Greenshine to fit specific needs of clients
- Easy to install

SPECIFICATIONS

System Voltage

Max. charge / load current

Deep discharge protection:

Cut-off Voltage

Reconnect Level

Overvoltage Protection

Undervoltage Protection

Max. Panel Voltage

Temperature compensation

(Charge Voltage)

Ambient Temperature

Max. Altitude

Battery Type

Adjustment Range:

Evening / Morning Hours

Night / Day Detection

Wire Cross Section

Type of Protection

12V | 24 Auto Recognition

5A | 10A | 20A (Different Models)

11V - 12V | 22V - 24V

12.8V | 25.6V

15.5V | 31.0V

10.5V | 21V

$U_{BATmin} + 30V$ (if module and battery are connected with correct polarity)

-25mV | K at 12V

-50mV | K at 24V

-40°C to +60°C, -40°F to +140°F

4,000m above sea level

Lead acid (GEL, AGM, flooded)

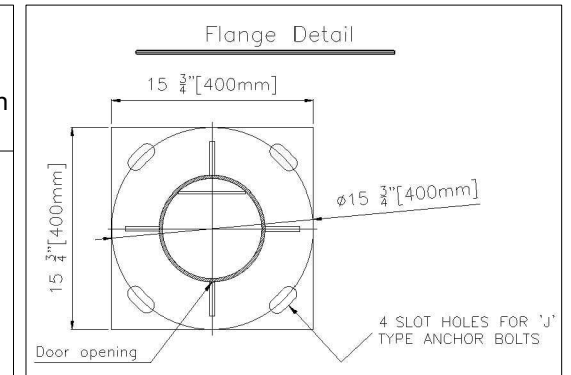
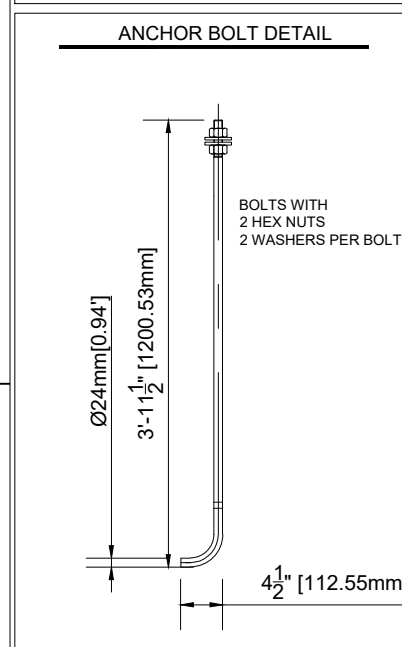
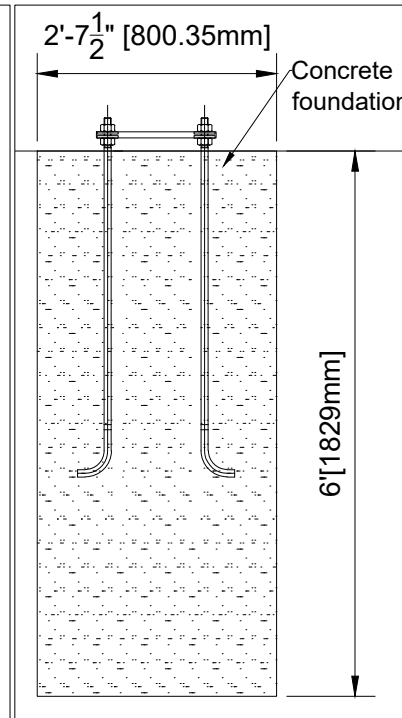
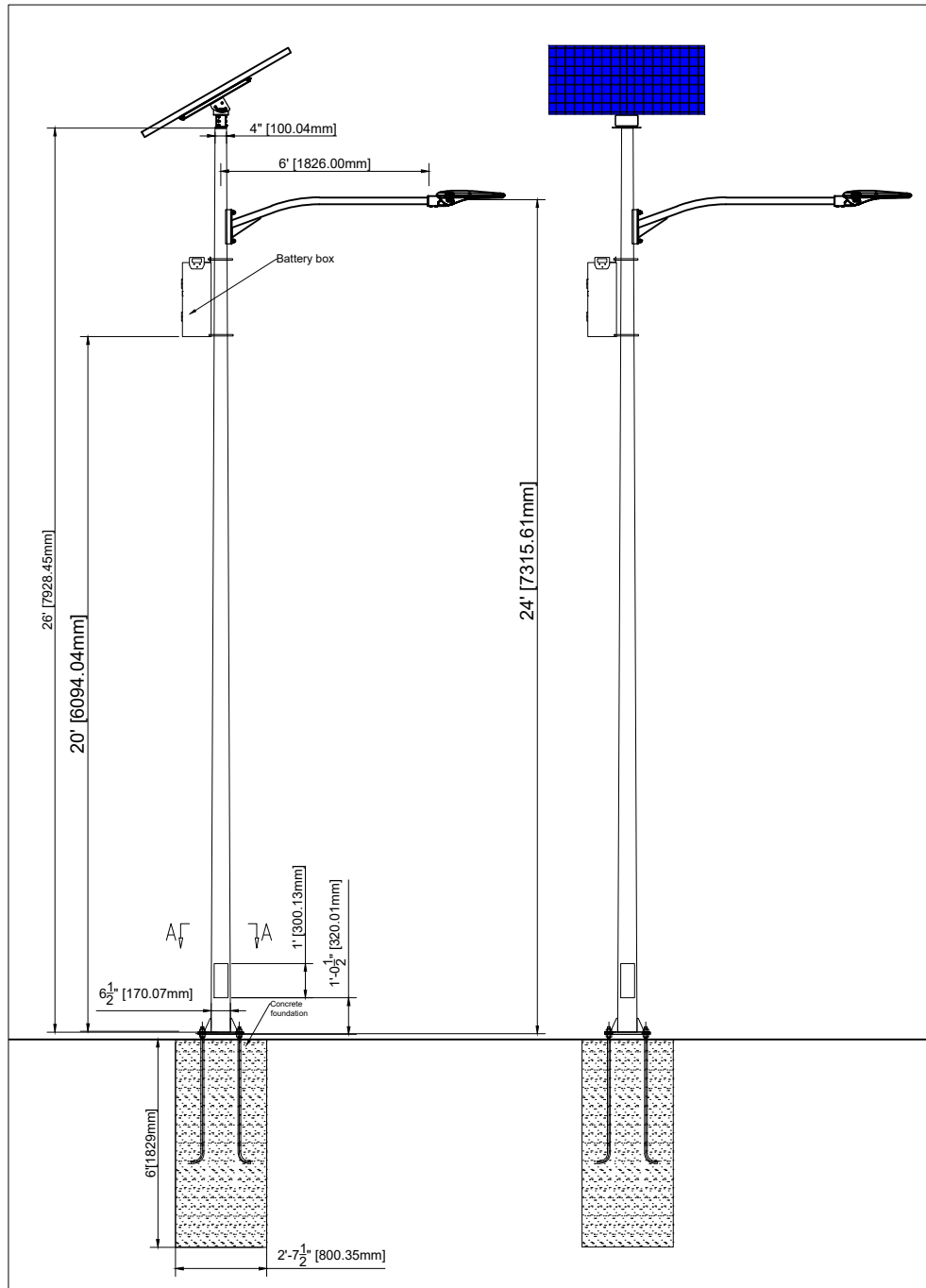
0 - 15h | 0 - 14h

2.5V - 10V

1.5mm²/ 1.5mm²/ 2.5mm², 15 (AWG)


IP68 (1.5 m, 72 h)





- Foundation dimensions shall be confirmed by a local engineering company, Greenshine New energy will not be held liable for any defect of the concrete foundation due to improper sizing.
- Drawings are based using hot-dipped galvanized steel, powder coating with a thickness of $\frac{5}{32}$ ".
- *EPA of the system exclude the EPA of the pole, includes the solar panels, brackets, arm and LED fixture and battery box.
- **Wind resistance of the poles are indicative and further customization can be provided.

Tilt angle of the solar panels	15	30	45	60
EPA (ft ²)*	7.88	15.16	21.52	26.26
Wind resistance** (mph)	150	150	150	150

Proposal			
System	SUPERA - 26' POLE - 6' ARM		
By	Luis Jimenez	Date	8/6/2020

www.streetlights-solar.com

Project 1



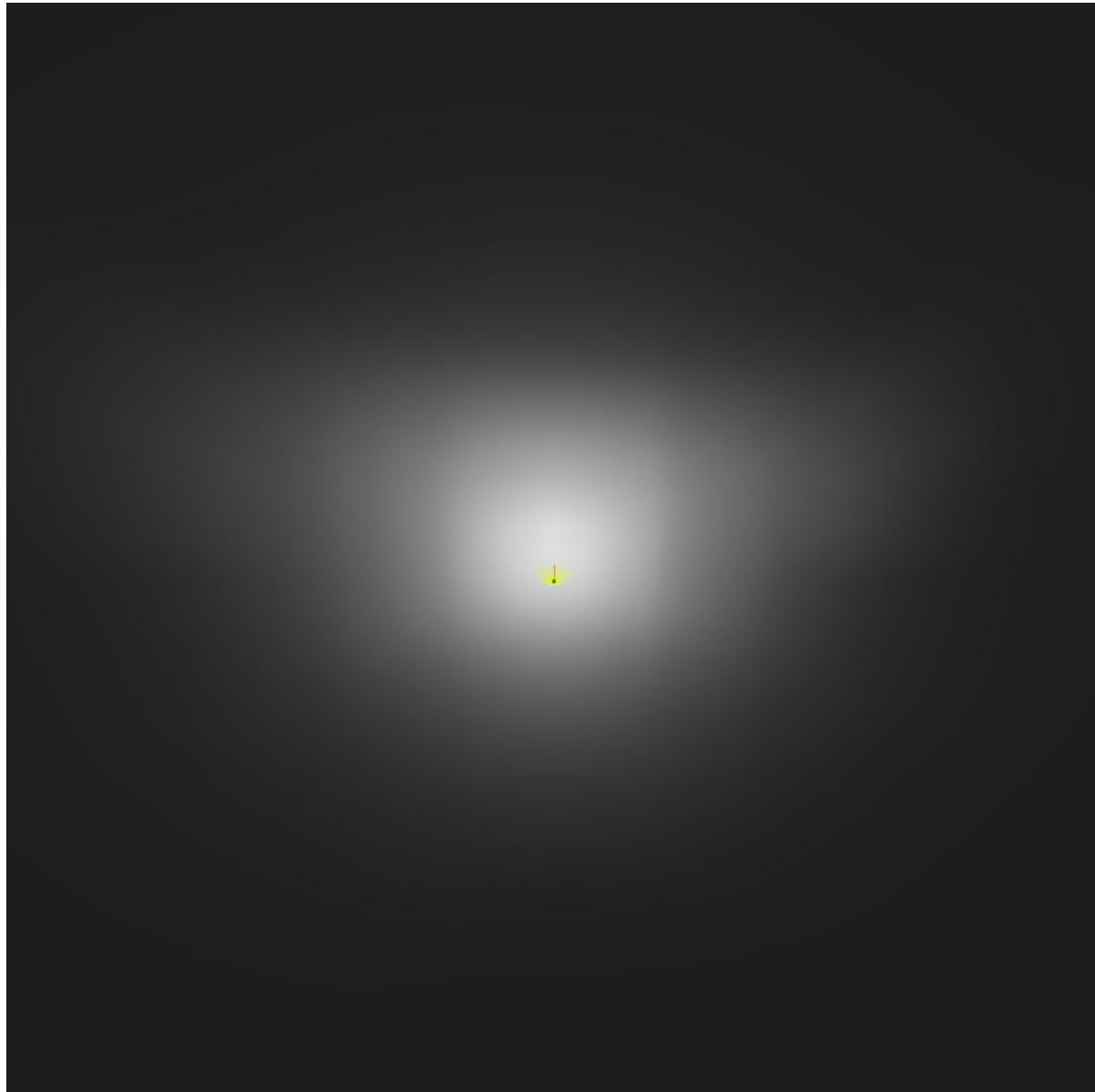
03 / 23 / 2020

Greenshine New Energy

23661 Birtcher Dr
Lake Forest, CA 92630

Operator Luis Jimenez
Telephone 949-609-9636 X 104
Fax
e-Mail luis.jimenez@streetlights-solar.com

SUPERA 60W - 26' POLE / 3D Rendering

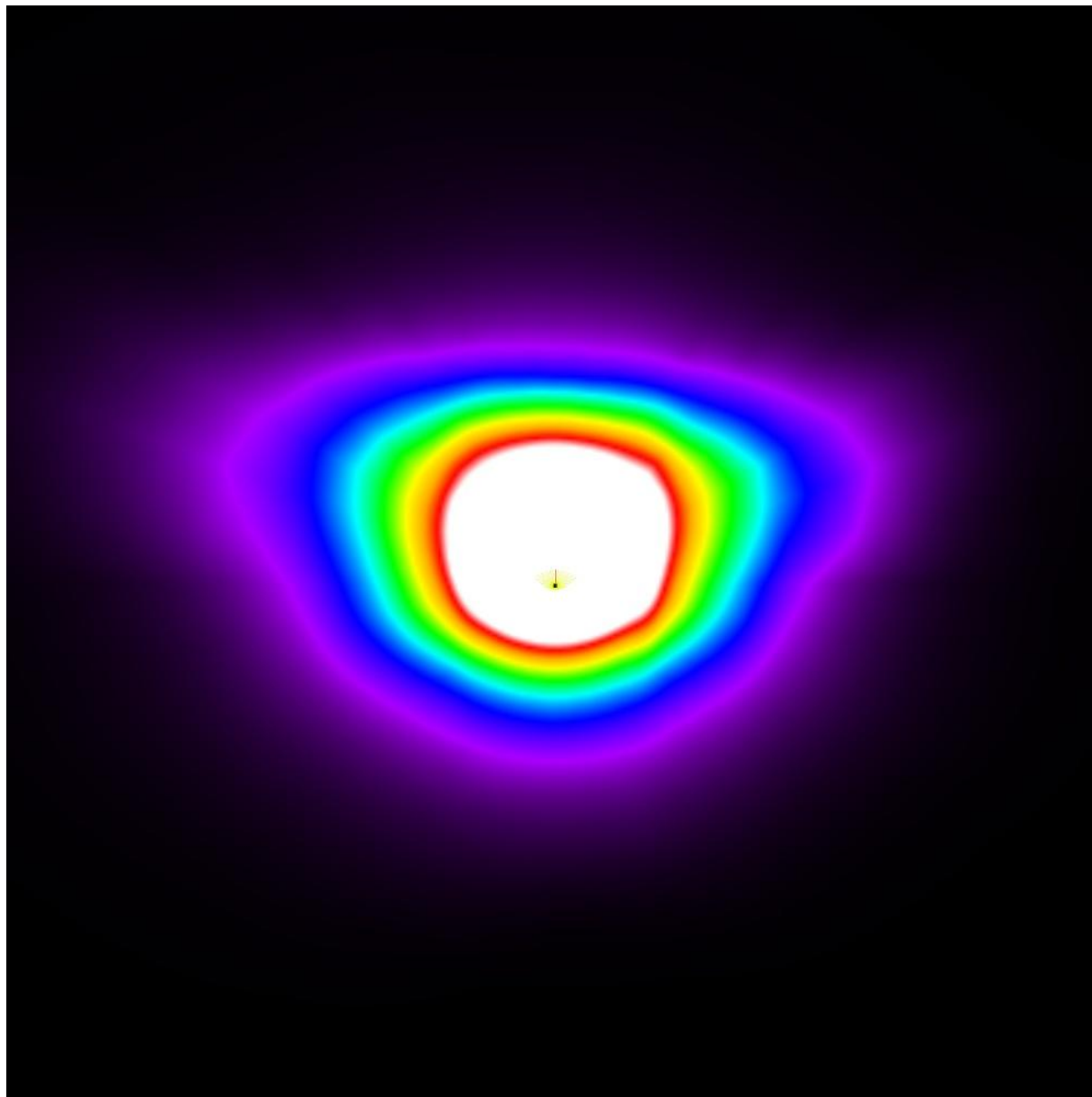




Greenshine New Energy
23661 Birtcher Dr
Lake Forest, CA 92630

Operator Luis Jimenez
Telephone 949-609-9636 X 104
Fax
e-Mail luis.jimenez@streetlights-solar.com

SUPERA 60W - 26' POLE / False Color Rendering



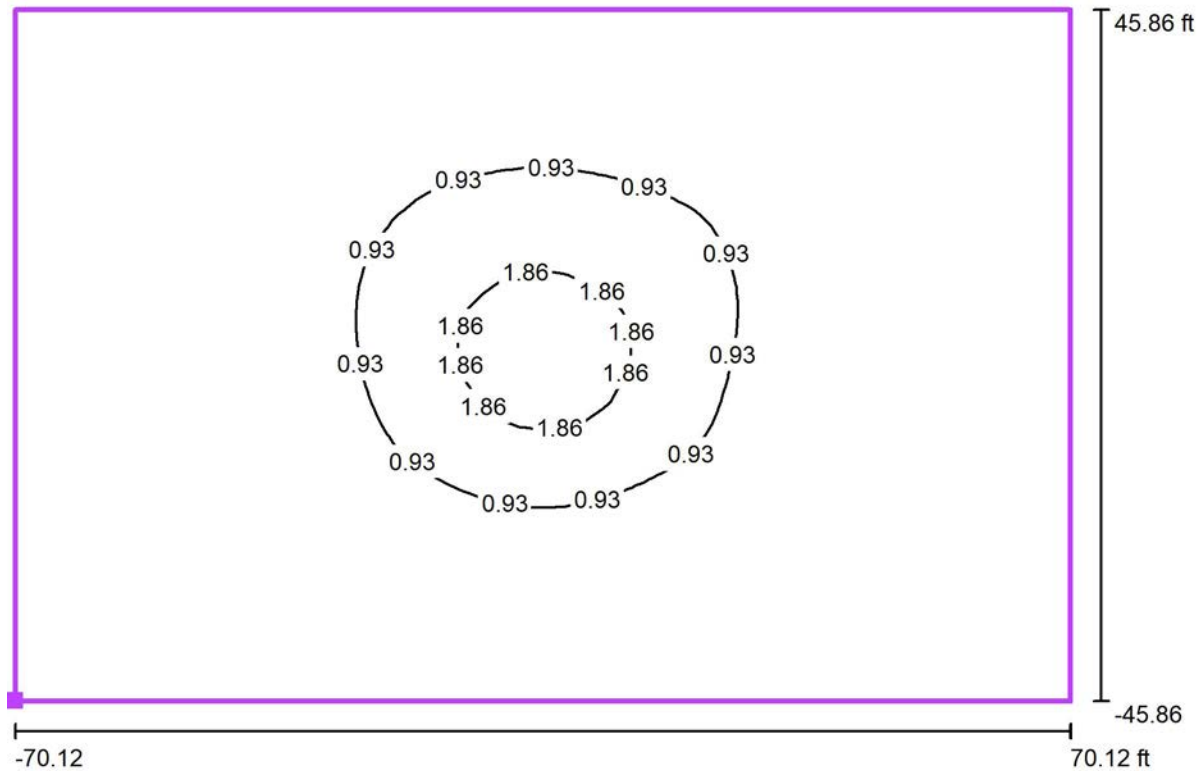
0 0.13 0.25 0.38 0.50 0.63 0.75 0.88 1.00

fc

Greenshine New Energy
23661 Birtcher Dr
Lake Forest, CA 92630

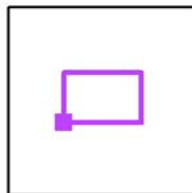
Operator Luis Jimenez
Telephone 949-609-9636 X 104
Fax
e-Mail luis.jimenez@streetlights-solar.com

SUPERA 60W - 26' POLE / Calculation Grid 1 / Isolines (E, Perpendicular)



Values in Footcandles, Scale 1 : 306

Position of surface in external scene:
Marked point: (101.641 ft, 132.298 ft,
0.000 ft)



Grid: 50 x 30 Points

E_{av} [fc]
0.44

E_{min} [fc]
0.01

E_{max} [fc]
2.39

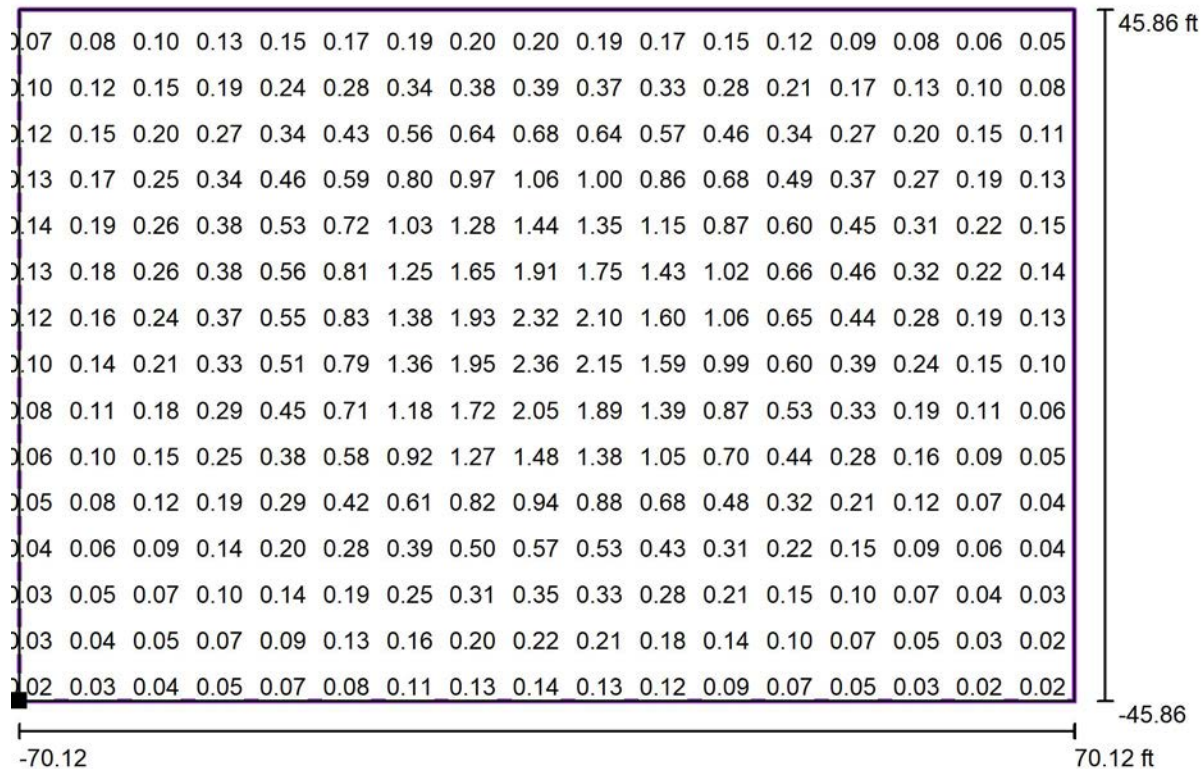
u_0
0.03

E_{min} / E_{max}
0.01

Greenshine New Energy
23661 Birtcher Dr
Lake Forest, CA 92630

Operator Luis Jimenez
Telephone 949-609-9636 X 104
Fax
e-Mail luis.jimenez@streetlights-solar.com

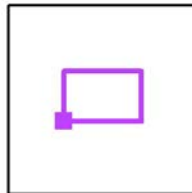
SUPERA 60W - 26' POLE / Calculation Grid 1 / Value Chart (E, Perpendicular)



Values in Footcandles, Scale 1 : 306

Not all calculated values could be displayed.

Position of surface in external scene:
Marked point: (101.641 ft, 132.298 ft,
0.000 ft)



Grid: 50 x 30 Points

E_{av} [fc]
0.44

E_{min} [fc]
0.01

E_{max} [fc]
2.39

u_0
0.03

E_{min} / E_{max}
0.01