

# Adult Tricycle User Manual



Read Carefully Before Assembly  
Keep for Future Reference

# Contents

<b>Disclaimer</b> .....	<b>1</b>
<b>Safety Information</b> .....	<b>1</b>
General Notice.....	1
Traffic Rules.....	1
Clothing .....	1
Safety Checks .....	2
Sensible Use .....	2
<b>Product Diagram</b> .....	<b>3</b>
<b>Parts Diagram</b> .....	<b>4</b>
<b>Assembly</b> .....	<b>5</b>
Installing the Rear Wheels and Caps .....	5
Installing the Handlebars .....	7
Connecting the Rear and Main Frames.....	8
Installing the Short Chain .....	8
Installing the Long Chain.....	9
Installing the Front Fender.....	10
Installing the Front Brake Disc.....	10
Installing the Front Wheel.....	11
Installing the Front Brake Caliper .....	12
Feeding the Rear Brake Cable.....	13
Installing the Rear Reflectors .....	14
Installing the Rear Fenders .....	14
Installing the Rear Fender Stays .....	15
Installing the Chain Guard.....	16
Installing the Pedals .....	16
Installing the Saddle .....	17
Assembling the Rear Basket .....	18
Installing the Rear Basket.....	19
Installing the Front Reflector.....	20
<b>Speed Gearing Adjustment</b> .....	<b>21</b>
<b>Maintenance</b> .....	<b>22</b>
<b>Troubleshooting</b> .....	<b>22</b>

# Disclaimer

Read this disclaimer **BEFORE** use.

## 1. **As-is**

This product(s) is sold 'as is' and without any express or implied warranties, including but not limited to the implied warranties of merchantability and fitness for a particular purpose.

## 2. **Product Modifications**

Any modifications or alterations to VIRIBUS products void any warranties and may result in damage or injury. VIRIBUS shall not be liable for any damages resulting from such modifications or alterations.

## 3. **Compliance with Laws**

Customers shall be liable for ensuring that the use of VIRIBUS products complies with all applicable laws and regulations in their respective jurisdictions. VIRIBUS assumes no responsibility for any violations of laws or regulations resulting from the use of its products.

## 4. **Correct Use**

Always use the product(s) only as directed in the accompanying manual. Failure to follow instructions may result in injury or damage.

Always ensure the operation, installment, maintenance, and repair of the product(s) is carried out by a competent person.

Always make maintenance regularly throughout the product lifecycle, you have the liability to keep the product operating as intended.

Always wear appropriate protective gear.

## 5. **Third-Party Products**

VIRIBUS shall not be liable for any damages or losses resulting from the use of third-party products in conjunction with our products. Customers should refer to the third-party's guidelines or/and warranties (if any) for any third-party products used.

## 6. **Limitation of Liability**

VIRIBUS shall not be liable for any direct, indirect, punitive, incidental, special, or consequential damages to property or life, whatsoever arising out of or connected with the use or misuse of our product(s). In no event shall VIRIBUS's liability exceed the value of the product(s) sold.

This disclaimer states the entire obligation of VIRIBUS with respect to the products. If any part of this disclaimer is determined to be void, invalid, unenforceable, or illegal, including, but not limited to the warranty disclaimers, liability disclaimers, and liability limitations set forth above, then the invalid or unenforceable provision will be deemed superseded by a valid, enforceable provision that most closely matches the intent of the original provision and the remainder of the agreement shall remain in full force and effect.

# Safety Information

## Warning

### General Notice

- Read **ALL** these instructions completely prior to assembly and use. Contact customer service if any point is unclear.
- Provide this manual to anyone who will use this tricycle and provide it with this tricycle (whether already assembled or not) if it is ever given or sold to a third party.
- **ONLY** assemble and adjust this tricycle in accordance with these instructions. Failure to do so may lead to serious property damage and severe personal injury.

### Traffic Rules

- **ALWAYS** obey **ALL** applicable local and national laws and regulations while riding.
- **DO NOT** allow use by children, by persons unfamiliar with this tricycle or these instructions, or by anyone whose physical or mental impairment precludes safe use.
- **DO NOT** ride this tricycle while tired or under the influence of drugs or medication.
- **DO NOT** ride this tricycle in **ANY** area prohibited to manual tricycles.
- **ALWAYS** maintain your reflectors and other required safety equipment.
- It is advisable to equip your tricycle with a warning device such as a horn, bell, and light in case you are riding at times of poor visibility. This is **EVEN** required in some jurisdictions.

### Clothing

- **ALWAYS** wear appropriate hand protection during assembly, disassembly, adjustment, or repair of this tricycle.
  - **DO NOT** wear loose footwear or clothing that may become caught in the wheels or any other moving parts while riding.
  - **DO NOT** ride this tricycle with bare feet.
- ALWAYS** wear closed-toe shoes with good traction to maintain grip on the pedals and provide protection for your feet.
- Gloves with grip padding are strongly recommended for riding, as they can strengthen your hold on the handlebars and protect your hands in case of a fall.
  - If necessary, wear sunglasses or other clear protective eyewear to shield your eyes from dust, debris, and insects.
  - If necessary, wear a helmet and other protective gear that meet safety standards while riding.
  - In sunny conditions, it is advisable to wear a hat or a cycling cap to shield your head and face from the sun. Also apply sunscreen to exposed skin, especially for long rides.
  - For best results, choose brightly colored or reflective clothing or attach reflective accessories or strips to your clothing to enhance visibility from all angles, especially during low-light conditions.

# Safety Information

## Safety Checks

- **ALWAYS** check that **BOTH** the front and rear brakes are positioned properly **BEFORE** riding.
- **ALWAYS** check that **ALL** components and fasteners are intact and securely tightened **BEFORE** and **AFTER** riding.
- Regularly check the reflectors to make sure that they are clean, straight, unbroken, and securely mounted. Also perform this check for lights if any have already been installed.

Riding with low light or without lights or reflectors is **EXTREMELY** dangerous.

- **DO NOT** ride this tricycle if any part is damaged or shows any sign of malfunction. Repair or replace worn and broken components before further use, especially bent or broken spokes and wheel rims.
- **NEVER** replace any components or fasteners with nonidentical ones.

## Sensible Use

- **ONLY** allow one person to use this tricycle at a time.
- **DO NOT** carry children in the rear basket while riding.

If carrying pets, ensure that this act is permitted in your jurisdiction and they are safely secured with comfort.

- For optimal safety, it is **NOT** recommended to ride your tricycle at night or in environments with poor visibility (e.g., foggy or snowy conditions).

If you have an emergency that makes it necessary to do so, be sure to have proper lights and reflectors and ride at low speed.

- **DO NOT** ride this tricycle in extreme weather conditions, such as thunderstorms and hurricanes. If you meet with them during a ride, stop your tricycle, find a safe shelter, and wait until they pass.
- When meeting a strong wind, keep a firm grip on the handlebars, lean into the wind, and adjust your position as needed to maintain control.
- In wet weather, be careful to avoid sharp turns, which are easy to cause an accidental fall.
- **ALWAYS** be mindful of your speed. Ensure you have sufficient room to brake in an emergency.
- **ALWAYS** allow more distance for braking when riding through leaves, loose gravel, or other debris, as these can affect the stopping power of your brakes.
- **ALWAYS** be alert for people, animals, or any obstacles that may appear in front of you while riding your tricycle.

Also be careful of passing parked cars, whose doors might open suddenly.

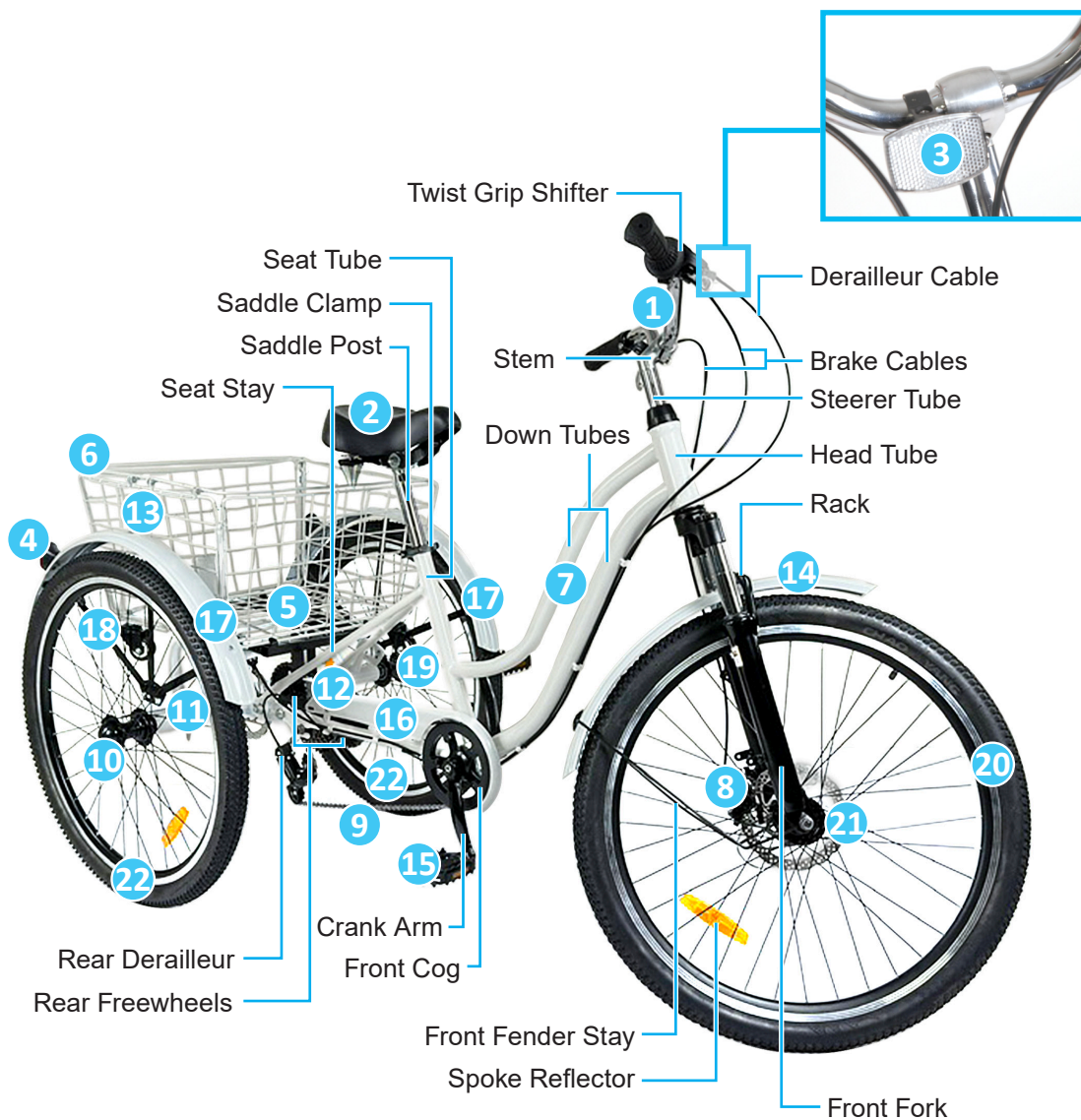
It is advisable to install warning devices to draw their attention, **BUT** always be ready to turn safely out of their way if needed.

- **ALWAYS** be careful at road and rail crossings. Slow down and check both ways for oncoming traffic.

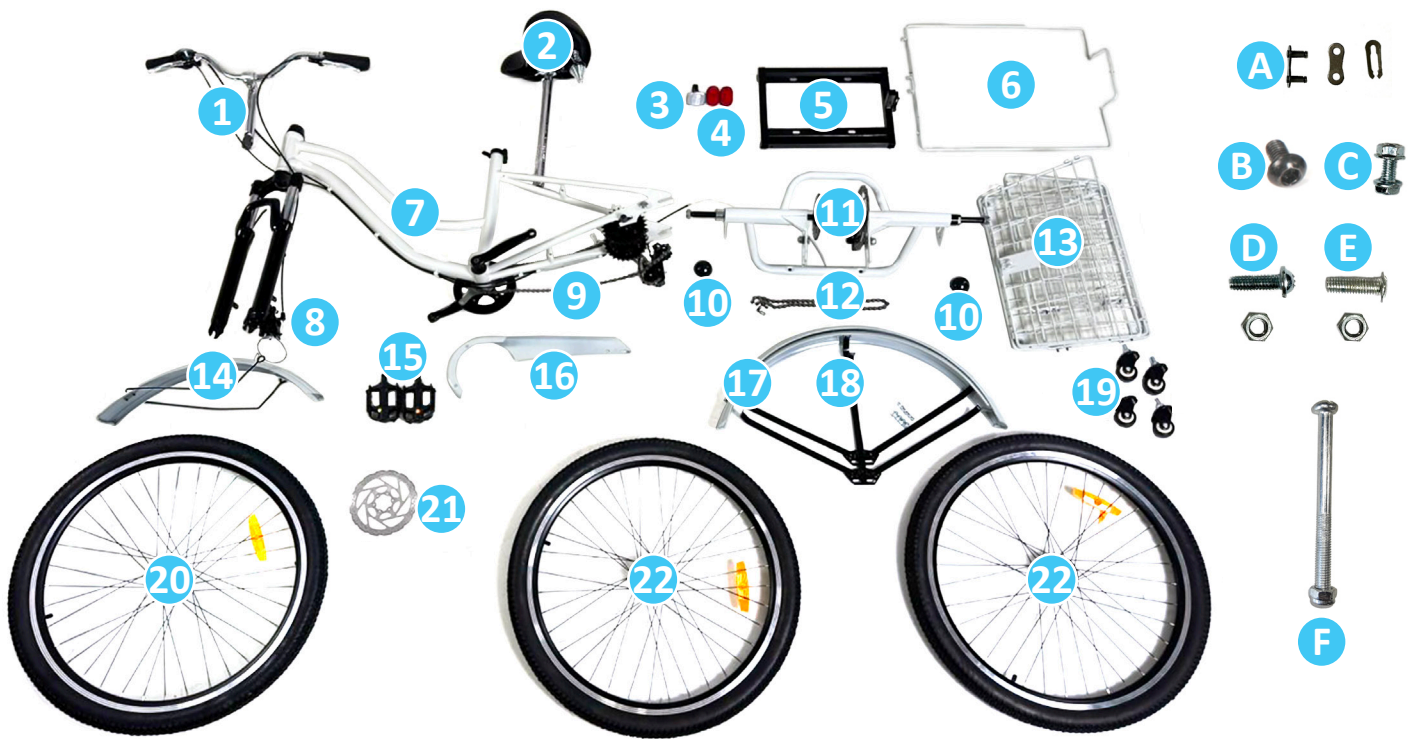
# Safety Information

- **DO NOT** ride this tricycle in close proximity to precipices or on highly uneven, sandy, or sloped surfaces.
- **DO NOT** push backward on the pedals when using the gear shifter. Otherwise, the chain may get stuck, causing serious damage to this tricycle.
- **DO NOT** carry packages or objects on your tricycle in a way that obstructs your view of the road.
- **DO NOT** use harsh abrasives or caustic chemicals to maintain this tricycle.
- **DO NOT** load this tricycle with more than 395 pounds (180 kg), including 154 pounds (70 kg) in the rear basket.
- **ALWAYS** maintain 40–65 psi (2.8–4.5 bar) when inflating the wheel tires.

# Product Diagram



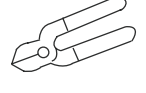
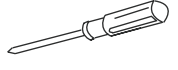

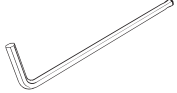


# Parts Diagram



No.	Name	Qty.
1	Handlebars	1
2	Saddle	1
3	Front Reflector	1
4	Rear Reflectors	2
5	Rear Basket Mount	1
6	Basket Handle	1
7	Main Frame with Rear Derailleur	1
8	Front Brake Caliper	1
9	Long Chain	1
10	Rear Wheel Caps	2
11	Rear Frame with Rear Brake Caliper & Disc	1
12	Short Chain	1
13	Rear Basket Frame	1
14	Front Fender with Stay	1
15	Pedals	2
16	Chain Guard	1
17	Rear Fenders	2
18	Rear Fender Stays	2
19	Casters	4
20	Front Wheel	1
21	Front Brake Disc	1
22	Rear Wheels	2
A	Chain Joint Parts	3
B	M4 Hex Bolts	6
C	M6x15 Phillips Bolts with Nuts	4
D	M5x12 Ball-Head Phillips Bolts with Nuts	6
E	M5x12 Flathead Phillips Bolts with Nuts	4
F	M6x50 Ball-Head Philips Bolts with Nuts	4

## Not Included but Helpful

Work Gloves 	Goggles 	Pliers 
Phillips Screwdriver 	Adjustable Wrench 	M4, 5, 6 Hex Wrenches 

## Notice

When you first receive your new tricycle, carefully unpack all these parts and check that nothing is missing or has been damaged in transit.

If necessary, ask your local dealer or contractor for supplements or replacements.

Besides, storing your original packaging through the warranty period will speed returns if any are needed.

## Caution

*For optimal safety, keep children and pets away from the packaging or provide constant supervision.*

# Assembly

## Warning

Don't hand and eye protection during assembly to prevent accidents. Work gloves and goggles (not included) are strongly recommended.

To see these instructions in video form, go to our **YouTube** channel **Viribus Tricycles** and search for "Viribus 7-Speed Adult Tricycle Assembly Video, ABR-S".

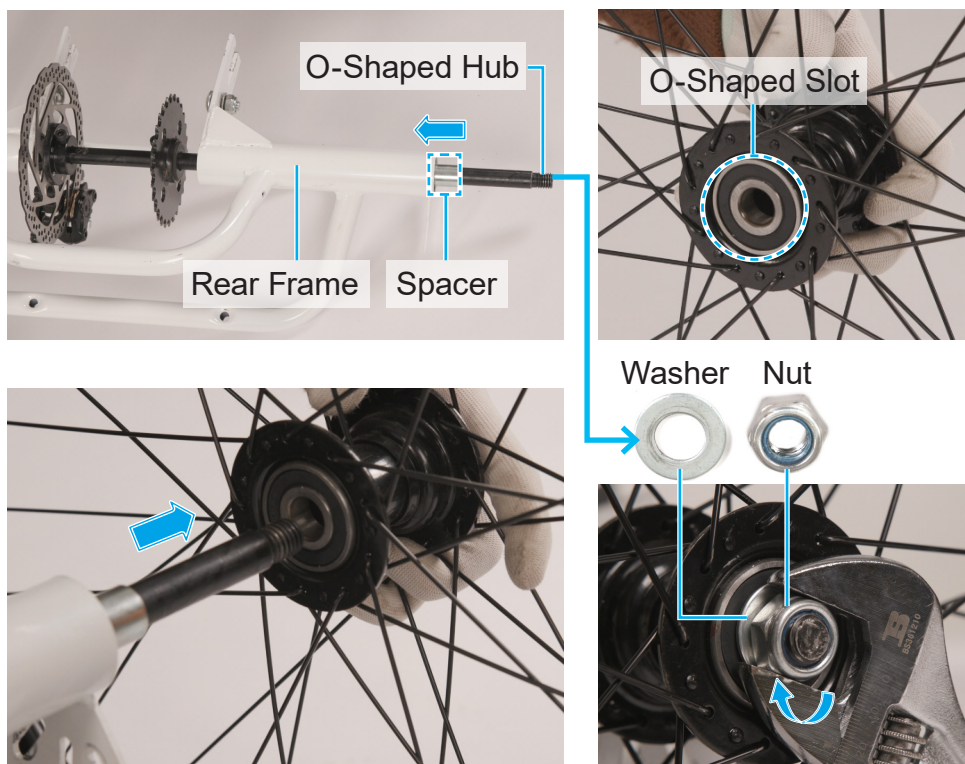
## Installing the Rear Wheels and Caps

**Note:** The two rear wheels (22) **ARE** different and should **NOT** be mixed up.

The wheel with the O-shaped slot goes with the O-shaped hub on the left side of the rear axle.

The wheel with the D-shaped slot goes with the D-shaped hub on the right side of the rear axle.

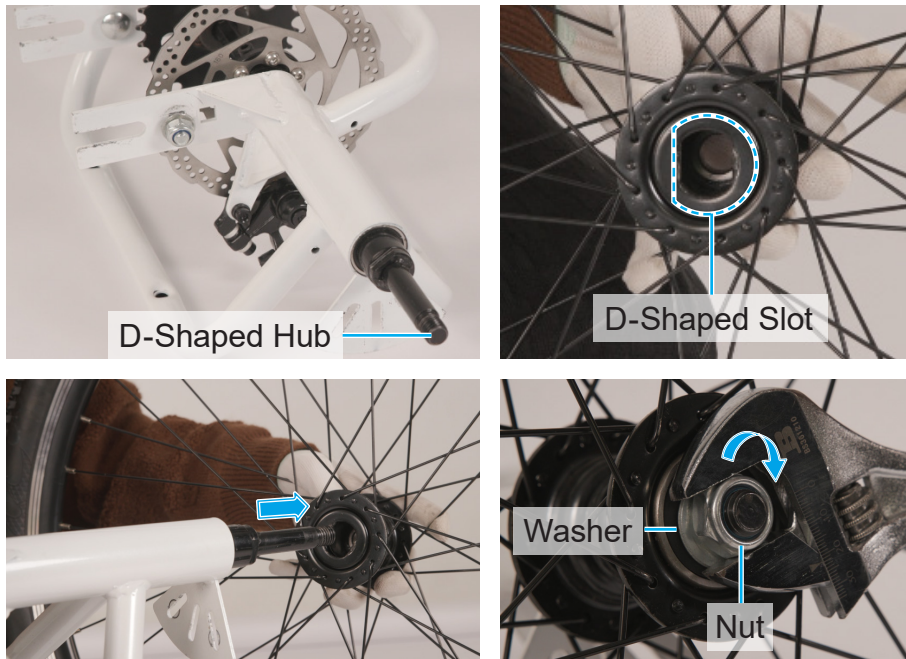
1. Disconnect the protective covers from the axles of the rear frame (11).
2. Remove the nut and washer from the O-shaped hub on the left side.
3. Slide the spacer inwards as shown.
4. Connect the wheel with the O-shaped slot to the O-shaped hub.
5. Replace the washer and nut, tightening the nut with an adjustable wrench (not included).



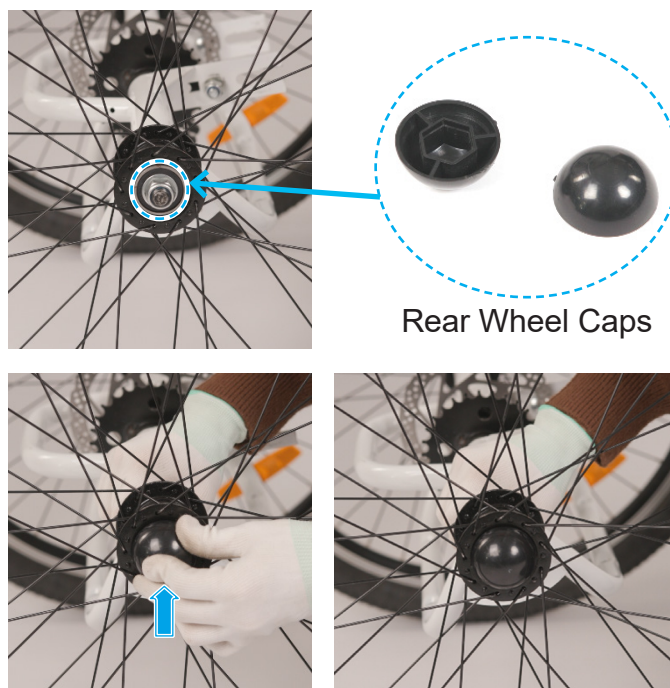


# Assembly

6. Remove the nut and washer from the D-shaped hub on the right side.
7. Connect the wheel with the D-shaped slot to the D-shaped hub.
8. Replace the washer and nut, tightening the nut in the same fashion.



9. Attach the rear wheel caps (10) to the rear wheel hubs, pressing until they are locked in place.



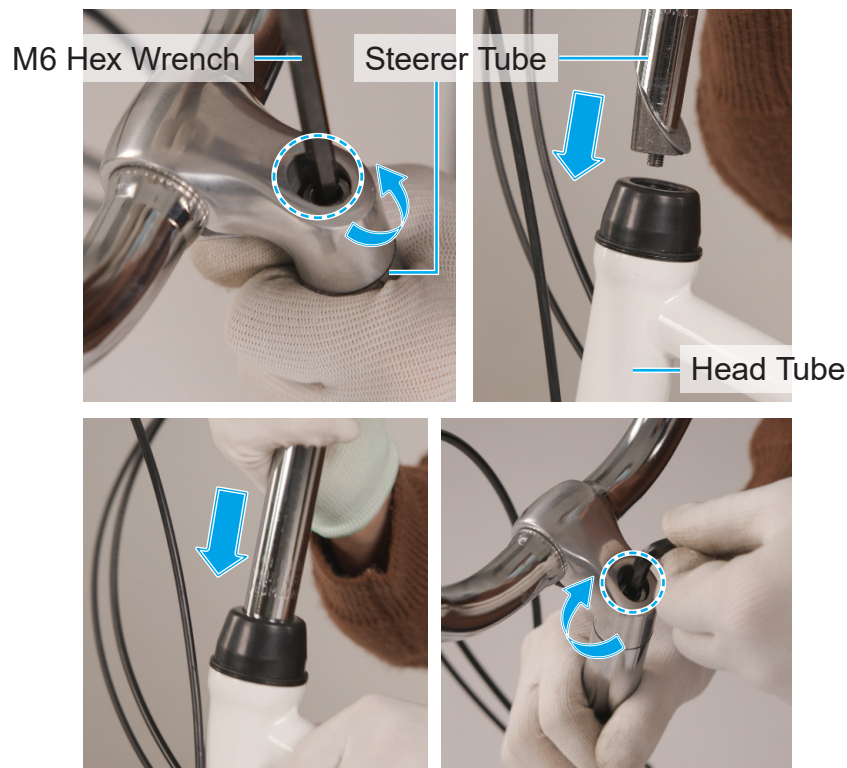
# Assembly

## Installing the Handlebars

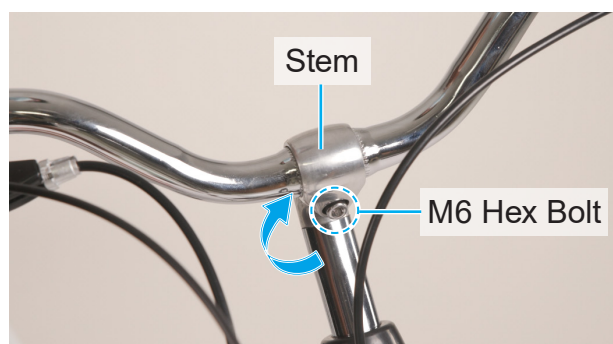
 **Warning**

*Handle the exposed steerer tube carefully to avoid injury.*

1. Remove the protective cover underneath the steerer tube of the handlebars (1).
2. Loosen the bolt at the top of the steerer tube using an M6 hex wrench (not included).
3. Slide the steerer tube into the head tube on the main frame (7) until your desired height is reached.
4. Retighten the top bolt to secure the steerer tube into place.



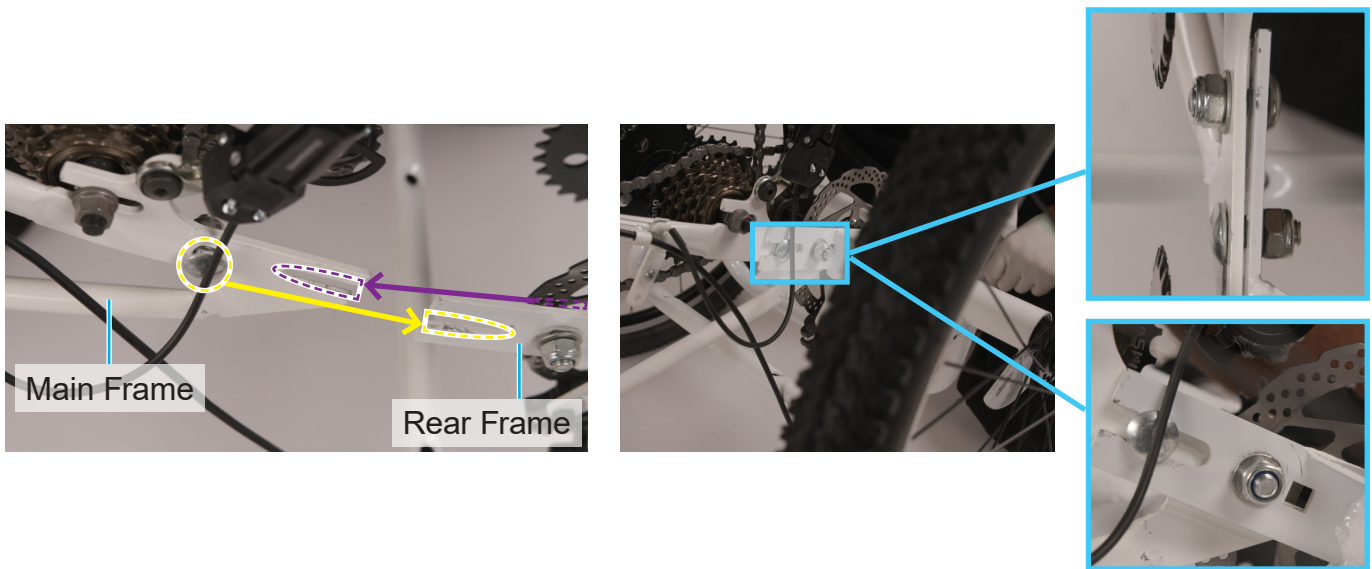
5. Adjust the position of the handlebars' stem as needed.
6. Tighten the front bolt with your M6 hex wrench to secure the stem.



# Assembly

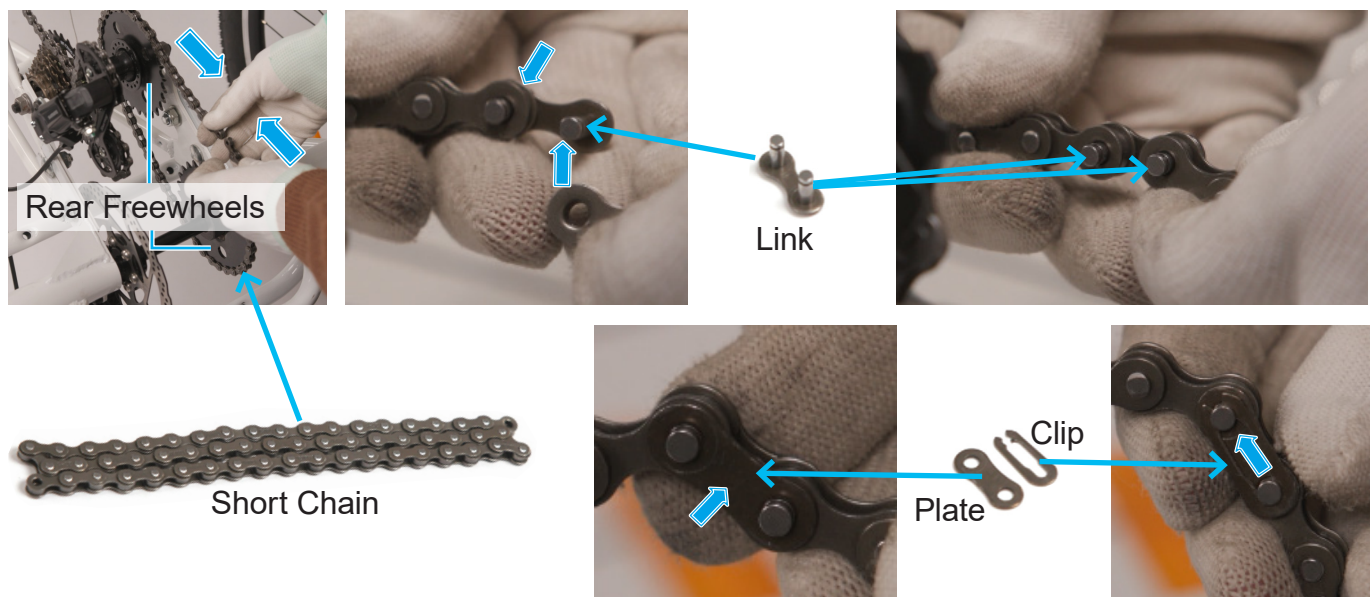
## Connecting the Rear and Main Frames

1. Turn the rear and main frames upside down.
2. Loosen the nuts and bolts on both sides of the main frame's tail and the rear frame's head.
3. Align the slots and bolts on the main frame with the bolts and slots on the rear frame.
4. Slide the main frame onto the rear frame as shown. For best results, start with either side and repeat for the other side.
5. Partially retighten all the nuts on the bolts that connect the two frames by hand.



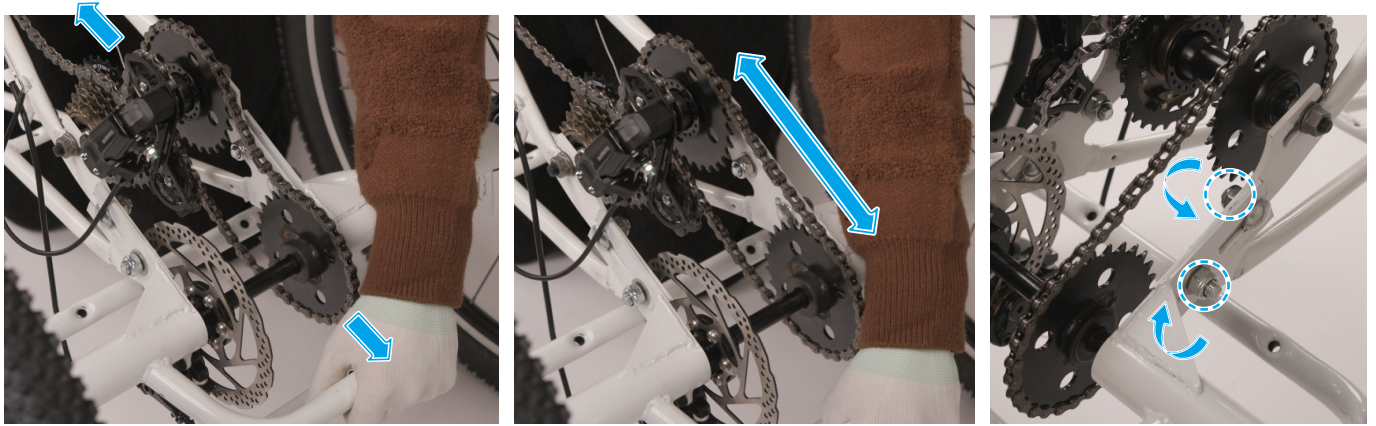
## Installing the Short Chain

1. Find the short chain (12) and its three joint parts (A) including a link, plate, and clip.
2. Place the short chain around the two rear freewheels.
3. Use the link and plate to join both ends of the chain, jamming the link pins into the slots.
4. Push the clip onto the link pins. Use pliers (not included) if needed.



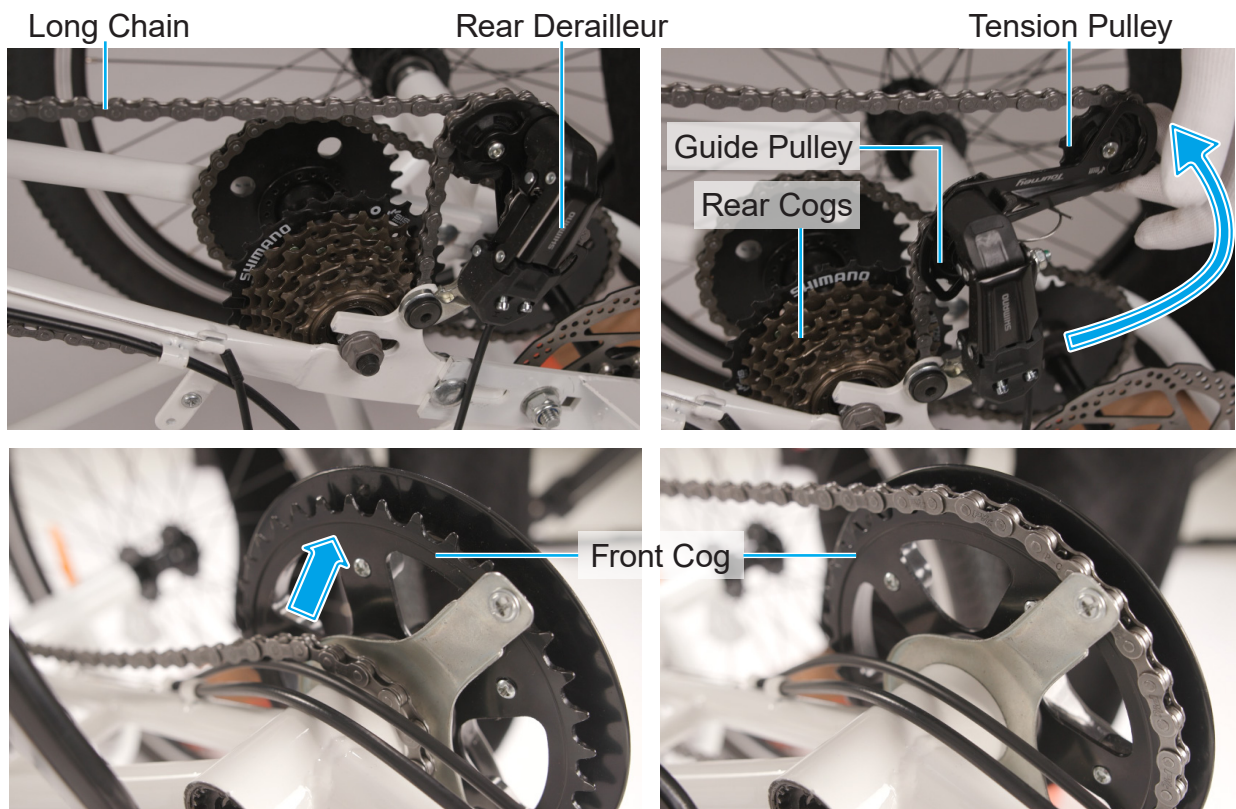
# Assembly

5. Pull the rear and main frames in opposite directions until the short chain becomes straight but **NOT** overtight.
6. Tighten the nuts on the bolts that connect the two frames completely with your adjustable wrench.



## Installing the Long Chain

1. Raise the tension pulley on the rear derailleur.
2. Arrange the long chain (9) in an S shape, ensuring that the chain remains well fitted on both pulleys and one rear cog.
3. Place the other end of the chain around the front cog as shown.
4. Rotate the adjacent crank arm, testing that both the long and short chains move freely.



# Assembly

## Installing the Front Fender

1. Unscrew the nut and Phillips bolt from the rack of the front fork.
2. Pass the front fender (14) through the front fork, aligning its slot with the bolt hole left on the rack.
3. Replace and tighten the removed bolt and nut to secure the front fender to the rack.



## Installing the Front Brake Disc

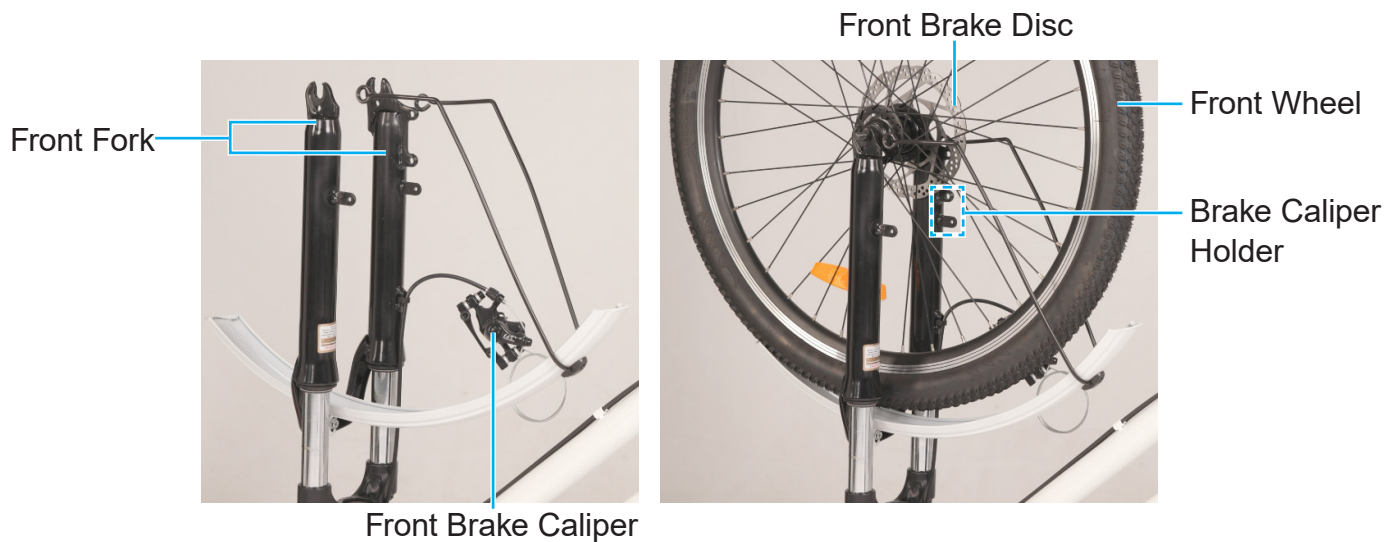
1. Fit the front brake disc (21) onto the hub of the front wheel (20).
2. Make sure the holes on the brake disc are well aligned with those on the hub.
3. Use the M4 hex bolts (B) to fasten the brake disc into place.



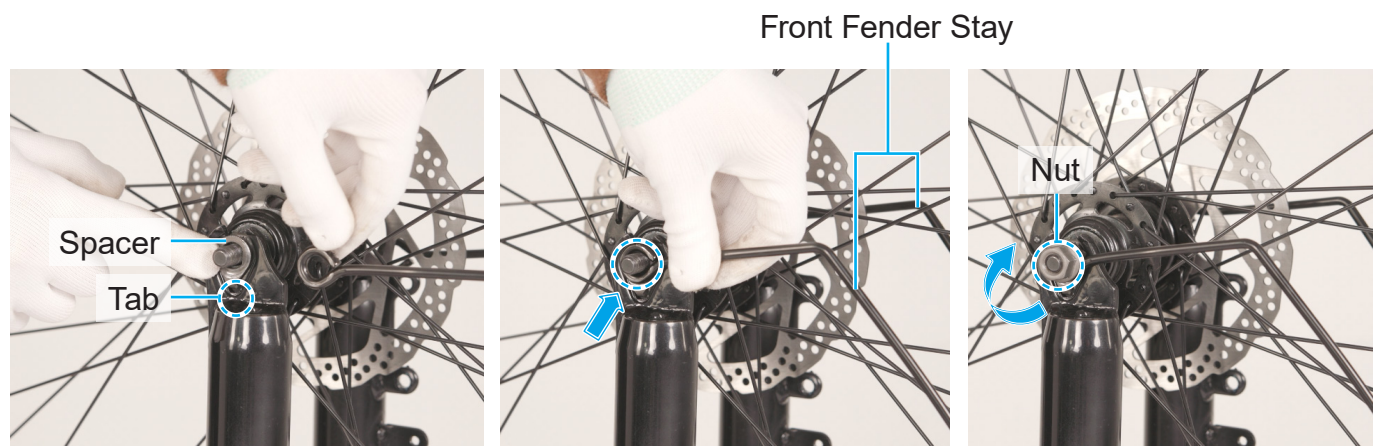
# Assembly

## Installing the Front Wheel

1. Loosen the bolts on the protective bar between the front fork and then remove the bar from the fork.
2. Remove the nuts and spacers from the front wheel axle by hand.
3. Place the front wheel onto the front fork, allowing its axle to be snugly held and the front brake disc to locate at the same side of the front brake caliper and its holder.



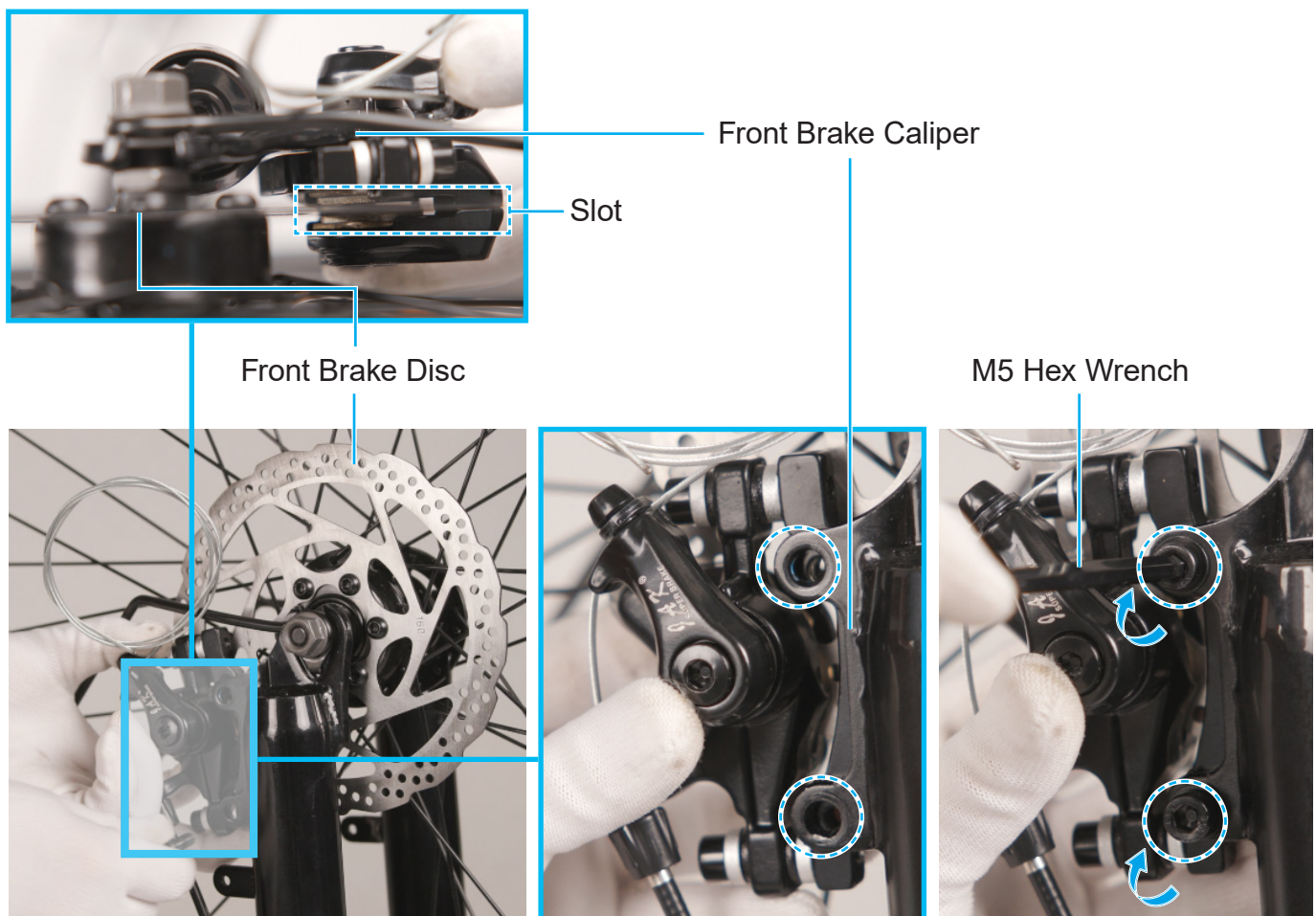
4. Replace the spacers onto the front wheel axle, inserting their tabs into the slots nearby on the front fork.
5. Position the feet of the front fender stay against these spacers.
6. Replace and tighten the removed nuts to secure the front wheel and fender stay.



# Assembly

## Installing the Front Brake Caliper

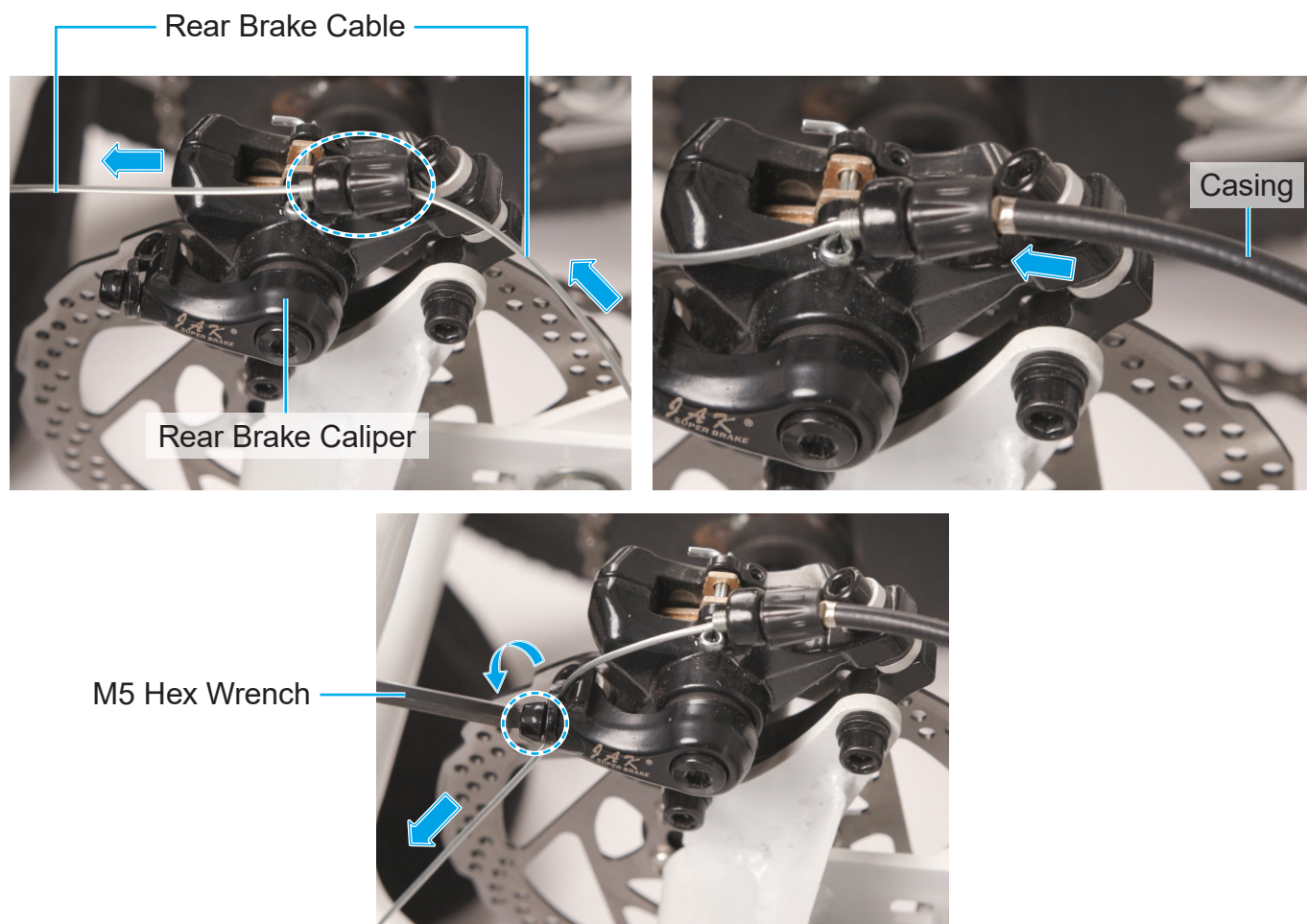
1. Unscrew the hex bolts from the front brake caliper (8) preconnected to the brake lever on the left handlebar.
2. Fit the caliper onto the front fork, jamming the front brake disc into its slot as shown.
3. Align the caliper's bolt holes with those of its holder on the front fork.
4. Replace the removed bolts onto the caliper.
5. Tighten the bolts with an M5 hex wrench (not included) until the caliper is locked in place.
6. Turn the tricycle frame right side up slowly and carefully. Seek help from one or more persons if necessary.
7. Press the left brake lever, testing that the front brake caliper works smoothly.



# Assembly

## Feeding the Rear Brake Cable

1. Feed the rear brake cable from the brake lever on the right handlebar through the top slot on the rear brake caliper.
2. Slide the casing towards the caliper until part of the exposed cable is covered.
3. Feed the cable through the caliper's lower slot as shown.
4. Pull the cable taut, tightening the locking bolt beside the lower slot with your M5 hex wrench.
5. Test the rear brake by pressing the right brake lever.

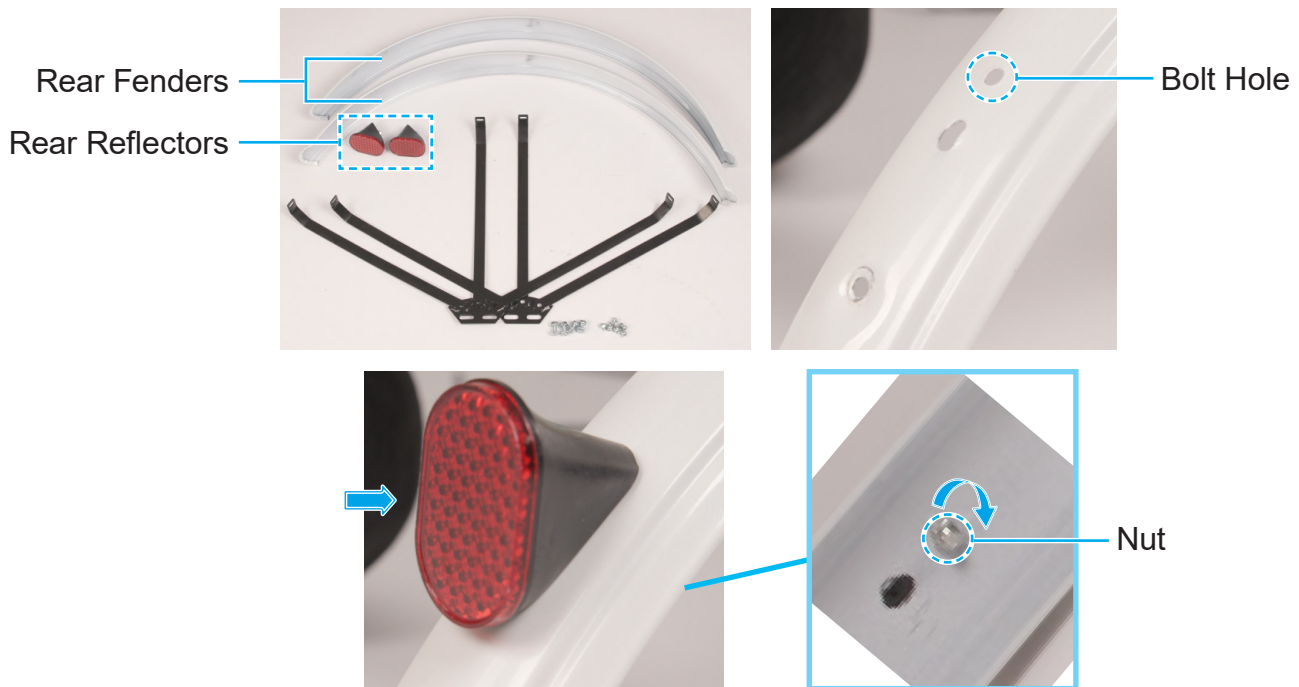




# Assembly

## Installing the Rear Reflectors

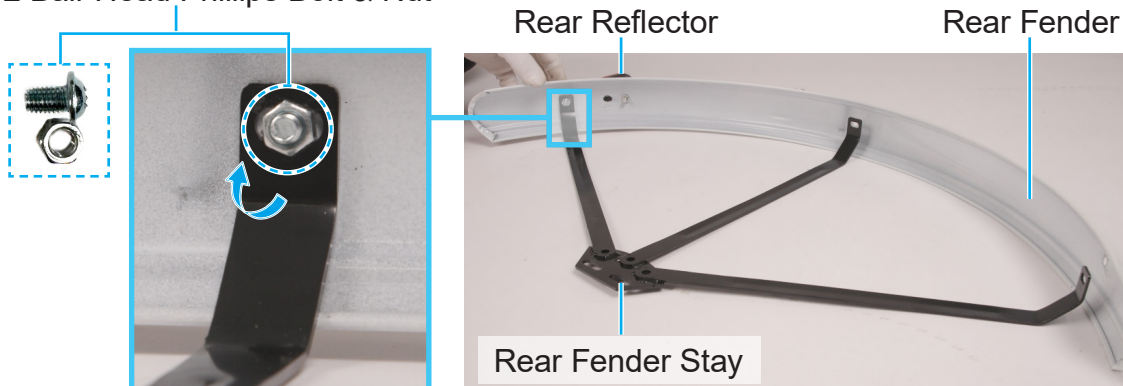
1. Unscrew the nuts from the bolts of the rear reflectors (4).
2. Attach the reflectors to the holes on the rear fenders (17) using their bolts.
3. Secure these reflectors by replacing their nuts.
4. Tighten the nuts, using your pliers for best results.



## Installing the Rear Fenders

1. Remove the nuts from the M5×12 ball-head Phillips bolts (D).
2. Align either rear fender with one of the rear fender stays (18) in the position as shown.
3. Attach three of the Phillips bolts to connect the rear fender to its stay.
4. Replace three nuts to these bolts.
5. Tighten the bolts and nuts with your Phillips screwdriver and adjustable wrench.
6. Repeat steps 2–5 for the other rear fender and stay.

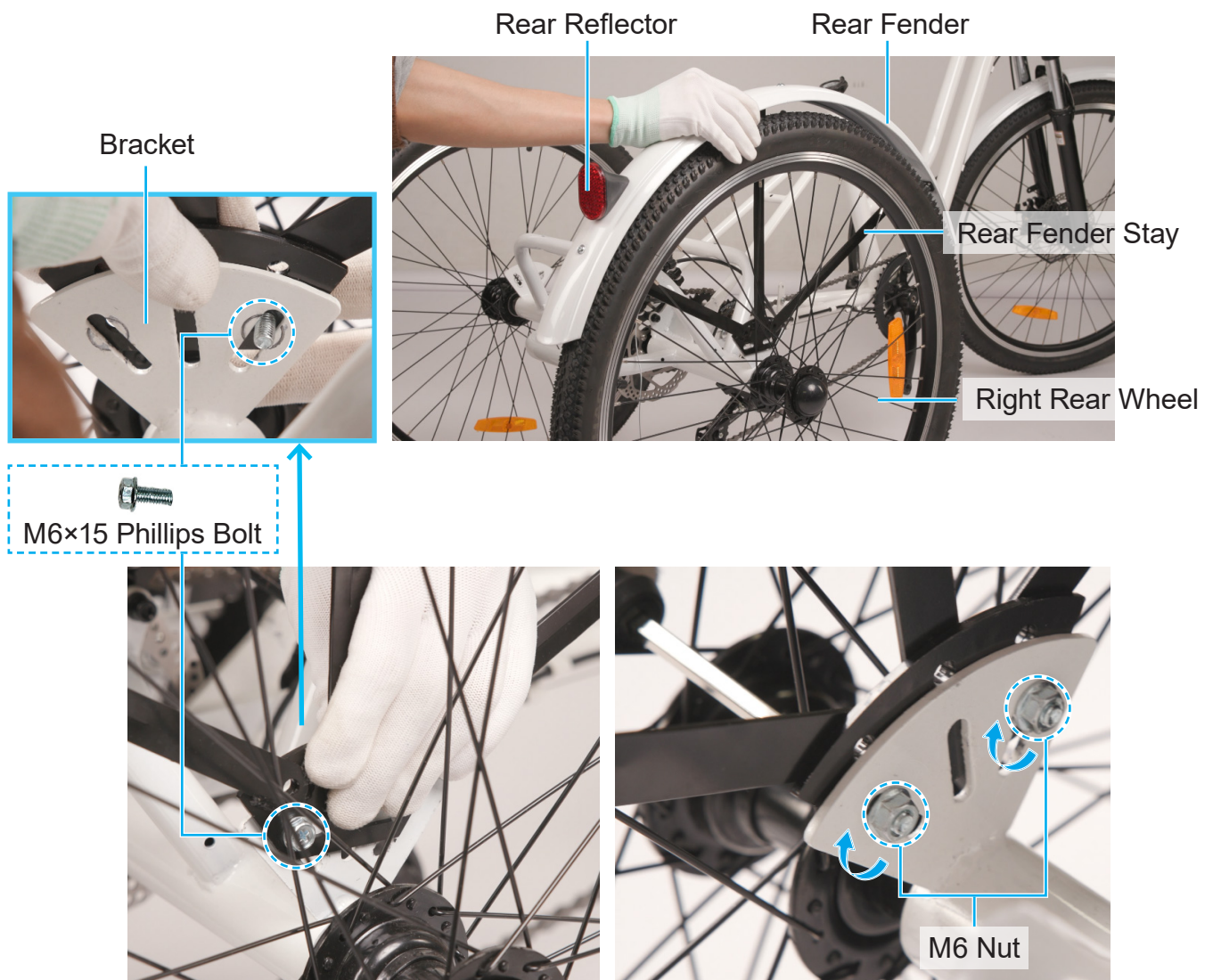
M5×12 Ball-Head Phillips Bolt & Nut



# Assembly

## Installing the Rear Fender Stays

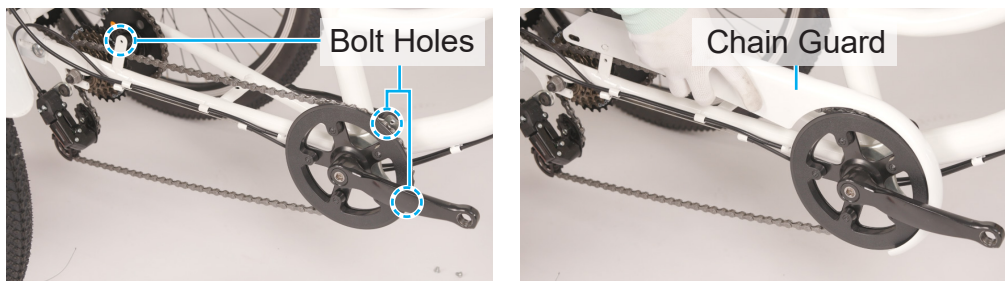
1. Remove the nuts from the M6×15 Phillips bolts (C).
2. Place the appropriate rear fender over the right rear wheel, with its reflector facing backwards.
3. Align the rear fender stay with the right side bracket on the rear frame, taking care **NOT** to allow the stay to touch the tire or wheel rim.
4. Attach the two of the Phillips bolts to connect the stay to the bracket.
5. Replace two nuts onto these bolts.
6. Tighten the bolts and nuts with your Phillips screwdriver and adjustable wrench.
7. Install the other rear fender over the left rear wheel following the same steps.



# Assembly

## Installing the Chain Guard

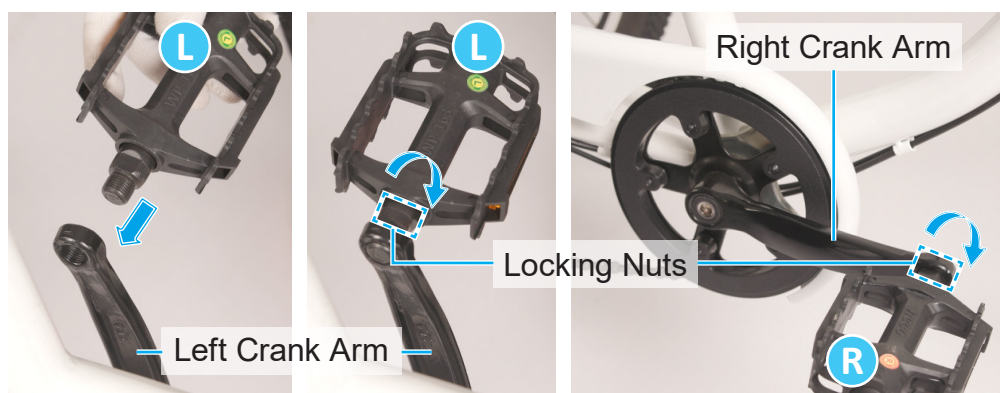
1. Unscrew the three Phillips bolts from the guard support near the crankset and rear derailleur.
2. Fit the chain guard (16) onto its support and over the long chain as shown.
3. Aligning the bolt holes, replace and tighten the removed bolts to secure the guard.
4. Rotate the right crank arm to confirm that the chain does **NOT** rub against the guard.  
If it does, readjust the guard so that the chain can move freely.



## Installing the Pedals

**Note:** The two pedals (15) **ARE** different and should **NOT** be mixed up.  
The left pedal is marked with **L** and the right with **R**.

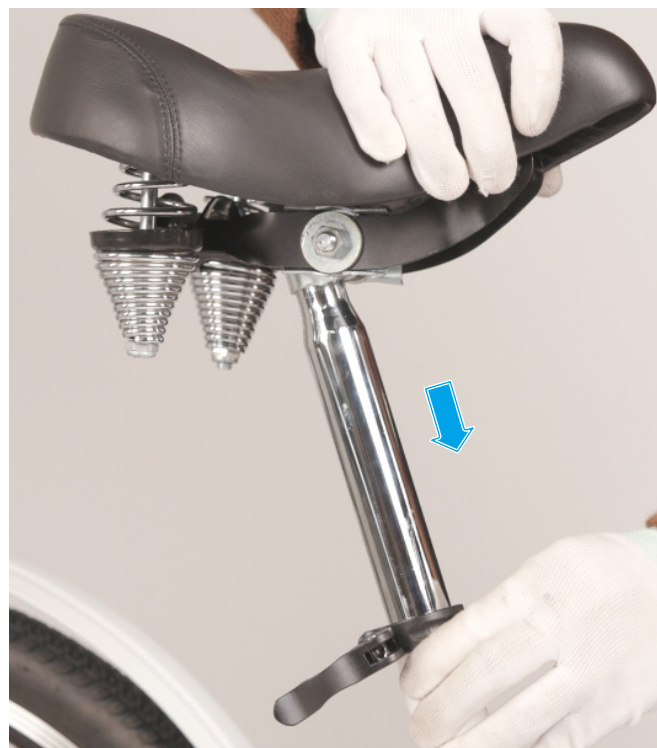
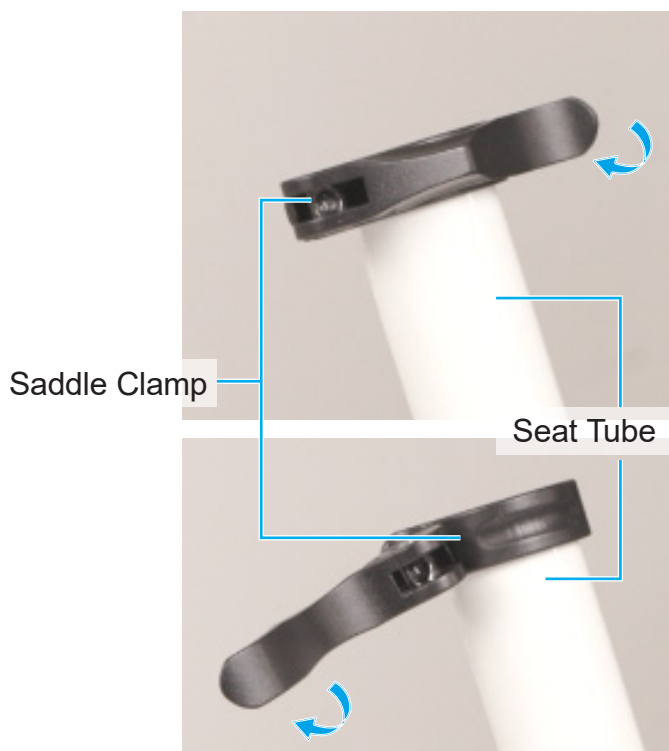
1. Attach the pedals to the crank arms on the appropriate sides, screwing them into place.
2. Tighten their locking nuts with your adjustable wrench.
3. Test that the chains turn smoothly using the pedals, adjusting as needed.



# Assembly

## Installing the Saddle

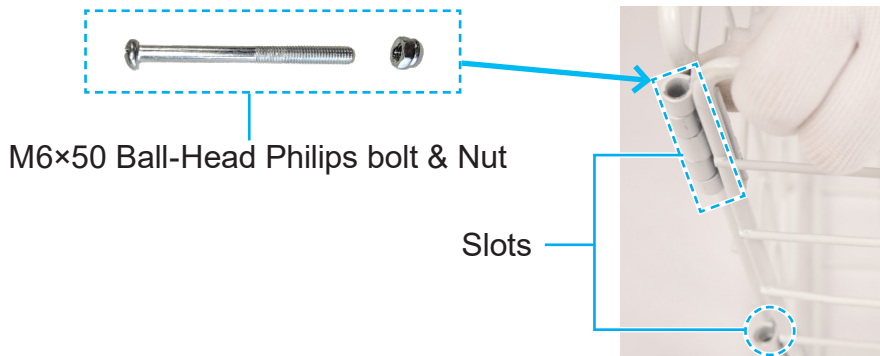
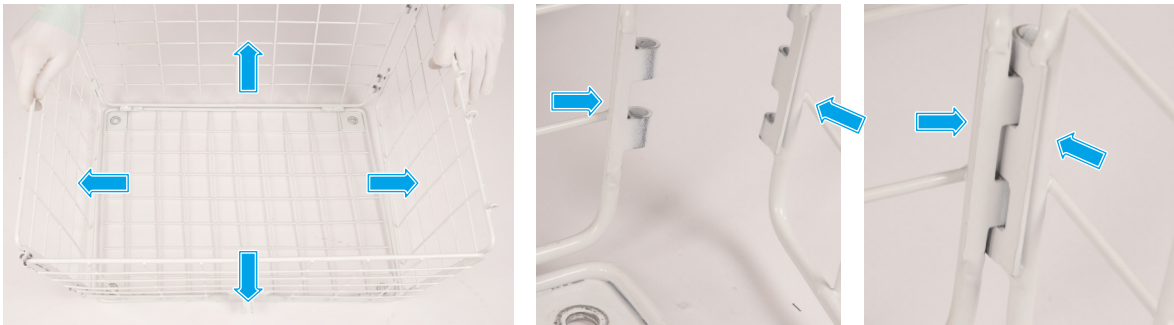
1. Open the saddle clamp on the top of the seat tube using its locking handle.
2. Insert the post of the saddle (2) into the seat tube until your preferred height is reached.
3. Close the saddle clamp by pulling its locking handle as shown.



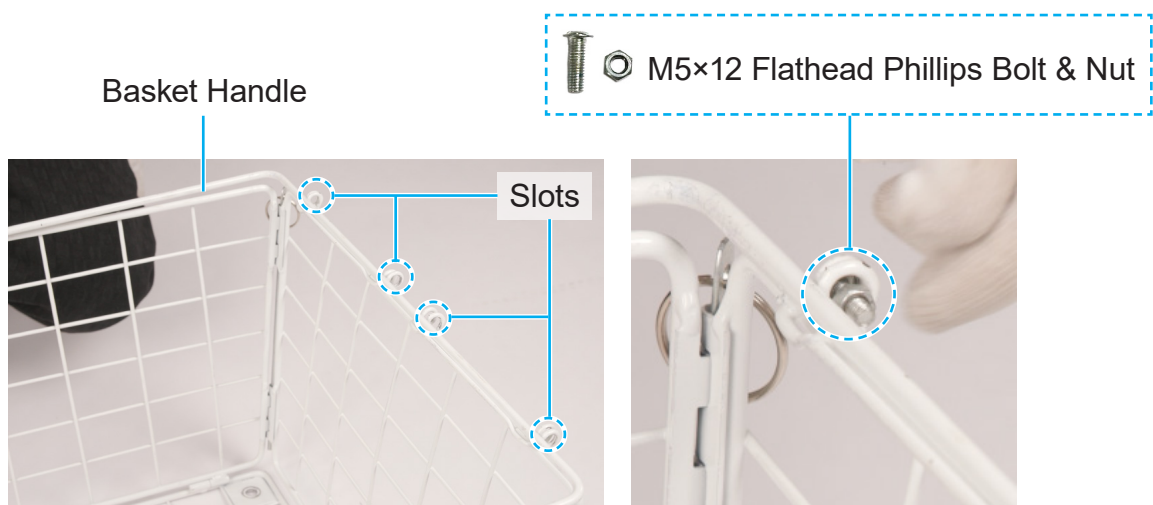
# Assembly

## Assembling the Rear Basket

1. Unfold the rear basket frame (13).
2. Connect each separate side, aligning the slots as shown.
3. Remove the nuts from the M6×50 ball-head Philips bolts (F).
4. Insert the bolts into the slots, replace the nuts, and tighten the bolts and nuts to secure these sides.

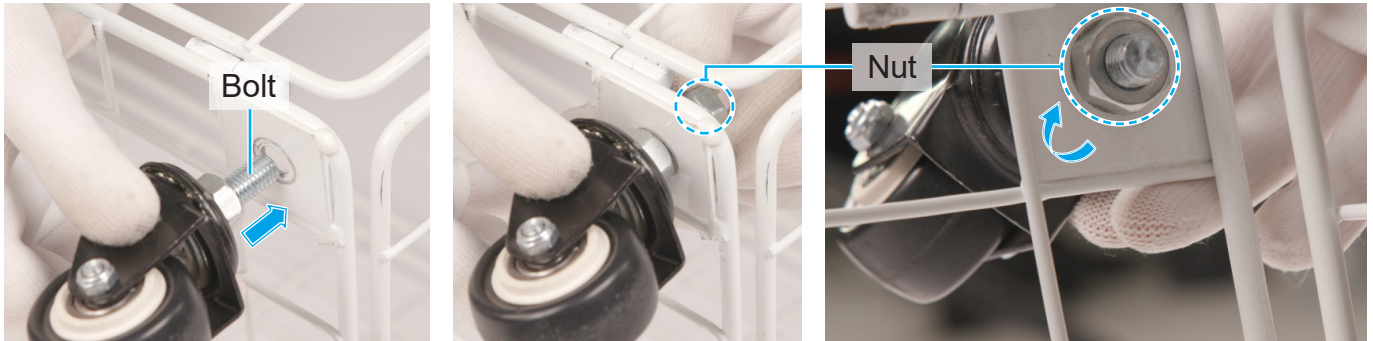


5. Align the four slots on the basket handle (6) with those on the rear basket's upper rim.
6. Secure the connection using the M5×12 flathead Phillips bolts and their nuts (E).



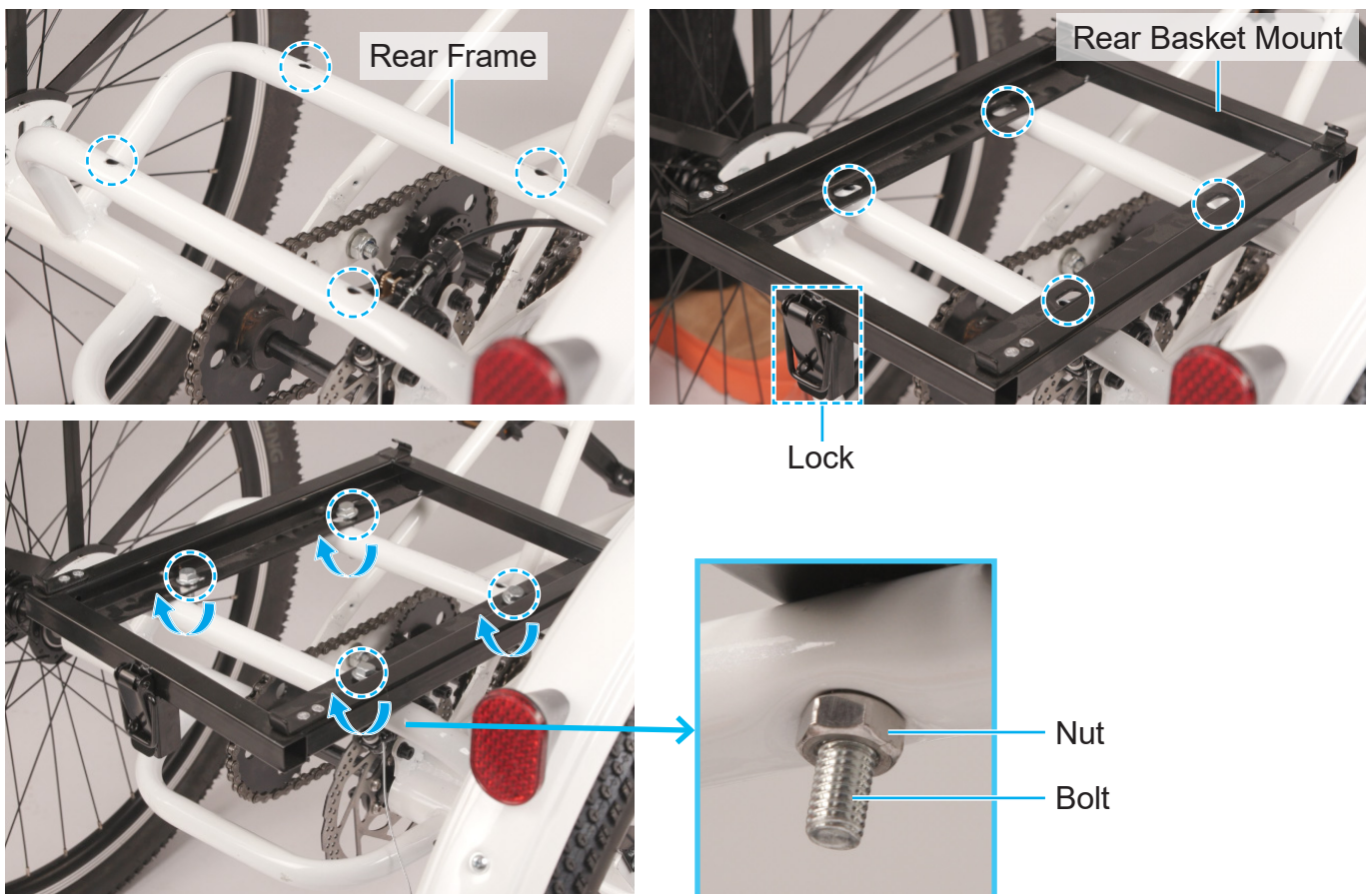
# Assembly

7. Unscrew the nut from the top bolt of each caster (19).
8. Attach the casters to the corner holes at the bottom of the rear basket using their top bolts.
9. Replace and tighten the removed nuts to secure these casters to the basket.



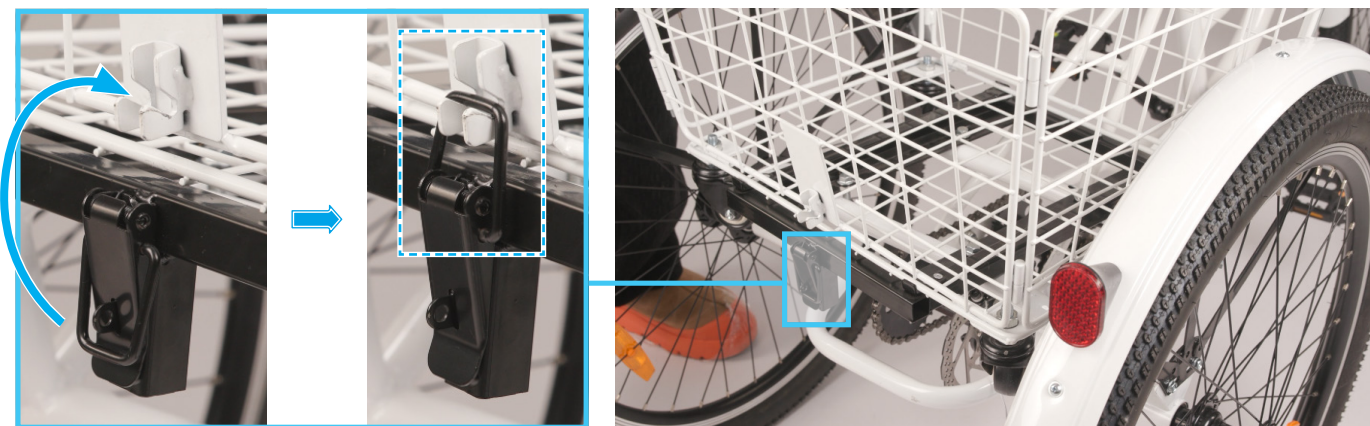
## Installing the Rear Basket

1. Remove the four sets of nuts and bolts from the top of the rear frame.
2. Place the rear basket mount (5) onto the rear frame, with its lock facing backwards.
3. Align the mount's slots with the bolt holes on the rear frame.
4. Replace and tighten the bolts and nuts to secure the mount to the rear frame.



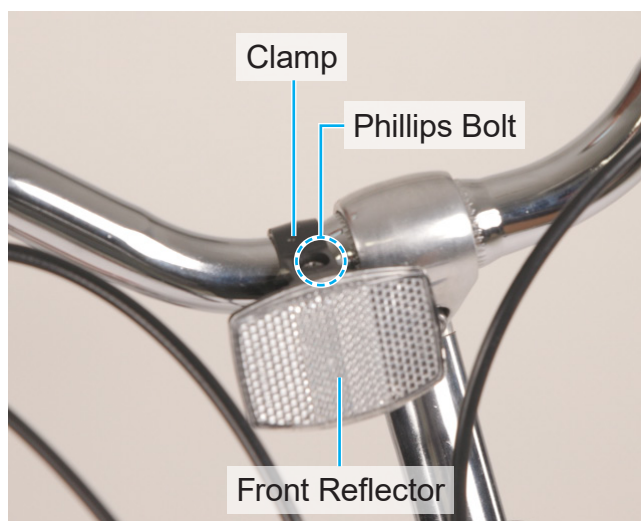
# Assembly

5. Fit the rear basket onto the rear frame.
6. Pull up the latch on the lock into the slots as shown to fasten the basket to its mount.



## Installing the Front Reflector

1. Unscrew the Phillips bolt from the clamp of the front reflector (3).
2. Place the front reflector at your desired location on the handlebars using its clamp.
3. Replace and tighten the removed bolt until the front reflector is locked into place.



# Assembly

## Caution

Remember to take the following **post-assembly actions** to ensure optimal functionality for a safe and enjoyable riding experience. Failure to do so may result in unpleasant riding, property damage, and personal injury.

- Thoroughly check that **ALL** components and fasteners **ARE** undamaged and securely attached.

*Pay special attention to the frame connections, handlebars, chains, pedals, and wheels.*

- Test smooth operation by rotating the wheels, steering, and pedaling.

*Make sure that **ALL** movements **ARE** fluid and free from any unusual resistance.*

- Inspect the front and rear brakes by pressing their levers while pushing the tricycle forward.

*Be sure that **BOTH** brake levers can effectively engage the brake systems, facilitating prompt and responsive deceleration and bringing the tricycle to a smooth and controlled stop.*

## Speed Gearing Adjustment

The Shimano gear shifter on the right handlebar uses a twist grip to control the 7 rear cogs, providing 7-speed gearing for manual riding.

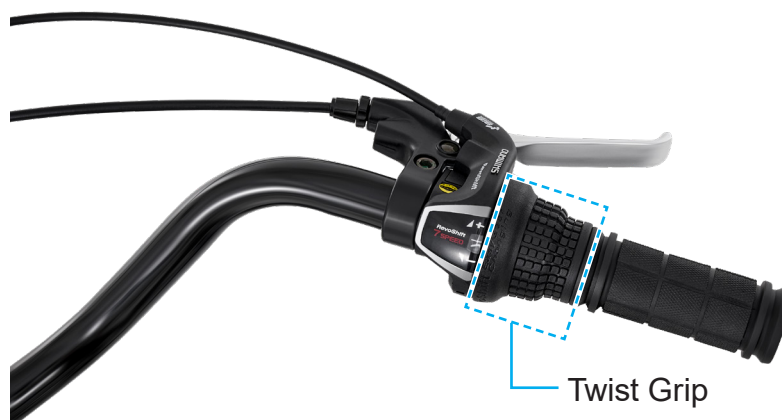
Larger gear numbers represent smaller cogs and higher speeds.

Smaller gear numbers refer to larger cogs and lower speeds.

To upshift, turn the twist grip forwards (toward +).

To downshift, turn the twist grip backwards (toward -).

Be sure that your tricycle's crank is turning while using the shifter to adjust the long chain on the cogs.





# Maintenance

- Check the parts of the tricycle for any looseness, stiffness, wear, or damage after each use. Tighten, lubricate, repair, or replace any problematic parts before further use.

 **Warning**

*ONLY use identical replacements.*

- The exterior of the tricycle can be cleaned with a soft damp cloth.

 **Caution**

*DO NOT use harsh abrasives or caustic chemicals.*

- If the tricycle is not to be used for an extended period of time, store in a cool dry place inaccessible to children and away from direct sunlight and rain.

# Troubleshooting

Problems	Usual Solutions
The chain cannot be exactly positioned on the smallest cog at the highest gear (7).	Adjust the high-limit screw (marked <b>H</b> ) on the rear derailleur with your Phillips screwdriver until the guide pulley and the smallest cog are lined up.
The chain cannot be exactly positioned on the largest cog at the lowest gear (1).	Adjust the low-limit screw (marked <b>L</b> ) on the rear derailleur with your Phillips screwdriver until the guide pulley and the largest cog are lined up.

## Contact Us

Thank you for choosing our products! If you have any questions or comments, contact us at [support@viribusbikes.com](mailto:support@viribusbikes.com) and we'll resolve your issue ASAP!

For a .pdf copy of the latest version of these instructions, use the appropriate app on your smartphone to scan the QR code to the right.

