

7-Speed Adult Tricycle User Manual



Read Carefully Before Use
Keep for Future Reference

Disclaimer

Read this disclaimer completely and carefully before proceeding with the rest of the manual content.

1. **As-Is**

This Viribus product is sold 'as is' and without any express or implied warranties, including but not limited to the implied warranties of merchantability and fitness for a particular purpose.

2. **Product Modifications**

Any modifications or alterations to Viribus products void any warranties and may result in damage or injury. Viribus shall not be liable for any damages resulting from such modifications or alterations.

3. **Compliance with Laws**

Customers shall be liable for ensuring that the use of Viribus products complies with all applicable laws and regulations in their respective jurisdictions. Viribus assumes no responsibility for any violations of laws or regulations resulting from the use of Viribus products.

4. **Correct Use**

Always use Viribus products only as directed in the accompanying manuals. Failure to follow instructions may result in injury or damage.

Always ensure the assembly, installation, operation, maintenance, or repair of Viribus products is carried out by a competent person.

Always make maintenance regularly throughout Viribus products' lifecycles; you have the liability to keep the products operating as intended.

Always wear appropriate protective gear.

5. **Third-Party Products**

Viribus shall not be liable for any damages or losses resulting from the use of third-party products in conjunction with Viribus products. Customers shall refer to the third-party's guidelines or/and warranties (if any) for any third-party products used.

6. **Limitation of Liability**

Viribus shall not be liable for any direct, indirect, punitive, incidental, special, or consequential damages to property or life, whatsoever arising out of or connected with the use or misuse of Viribus products. In no event shall Viribus's liability exceed the value of the products sold.

This disclaimer states the entire obligation of Viribus with respect to Viribus products. If any part of this disclaimer is determined to be void, invalid, unenforceable, or illegal, including but not limited to the warranty disclaimers, liability disclaimers, and liability limitations set forth above, the invalid or unenforceable provision will be deemed superseded by a valid and enforceable provision that most closely matches the intent of the original provision and the remainder of the agreement shall remain in full force and effect.

Contents

Safety Information	1
Package List	2
Assembly	5
1. Rear Derailleur	5
2. Rear Wheels.....	6
3. Main and Rear Frames.....	7
4. Chain	8
5. Front Fender.....	9
6. Front Wheel.....	10
7. Chain Guard	11
8. Handlebars	11
9. Derailleur Cable.....	12
10. Front Brake.....	14
11. Rear Brake.....	15
12. Rear Fenders, Supports, and Reflectors.....	16
13. Pedals.....	17
14. Saddle	17
15. Rear Basket.....	18
16. Front Basket	19
17. Front Reflector.....	19
18. Bell.....	20
19. Rear Wheel Caps	20
20. Bag	20
Maintenance	21

Safety Information

Warning!

Traffic Rules

- **ALWAYS** obey all applicable local and national laws and regulations while riding.
- It is advisable to equip your tricycle with a warning device such as a horn, bell, or light in case you are riding at times of poor visibility. This is even required in some jurisdictions.
- **ALWAYS** be alert. People or animals may dart in front of you. Also be careful of passing parked cars, whose doors might open suddenly.
- Be careful at road and rail crossings. Slow down and check both ways for oncoming traffic.

Weather and Clothing

- In wet weather, be careful to avoid sharp turns and allow more distance for braking. Caliper brakes may become less efficient when wet.
- We **DO NOT** recommend riding your tricycle at night. If you have an emergency that makes it necessary to ride at night, be sure to have proper lights and reflectors. **DO NOT** ride at night without a front light, rear lights, or front and rear reflectors.
- **ALWAYS** wear a helmet and other required protective gear that meet safety standards when riding.
- **ALWAYS** wear shoes when riding your tricycle and avoid loose-fitting clothes.

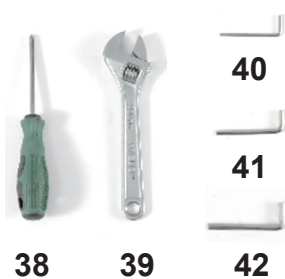
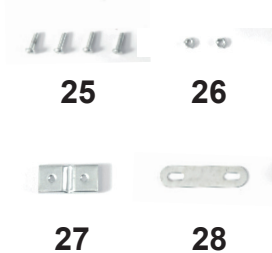
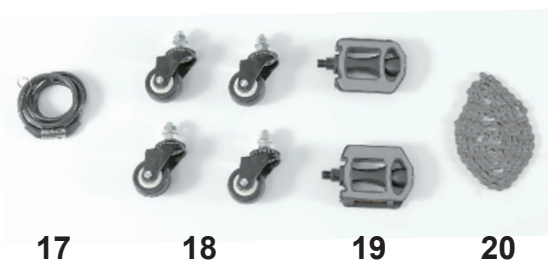
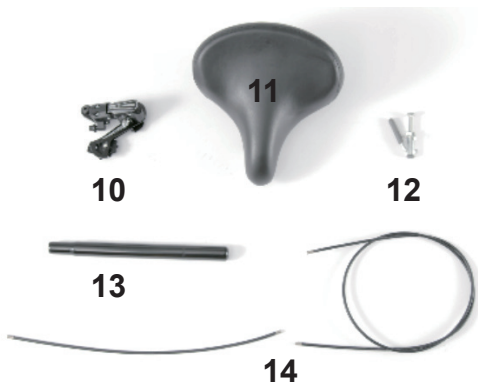
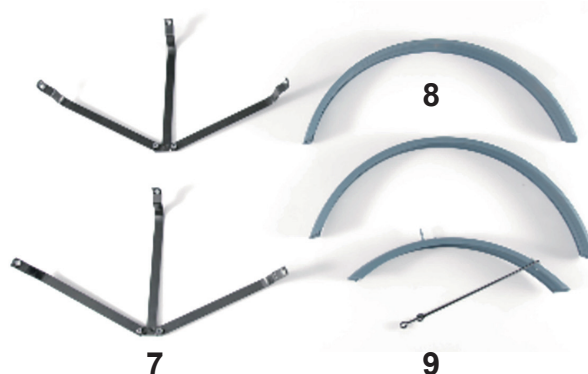
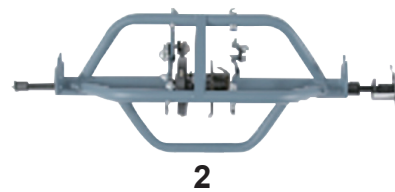
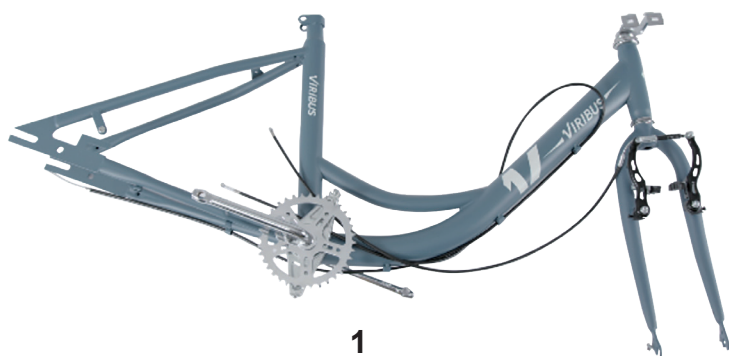
Safety Checks

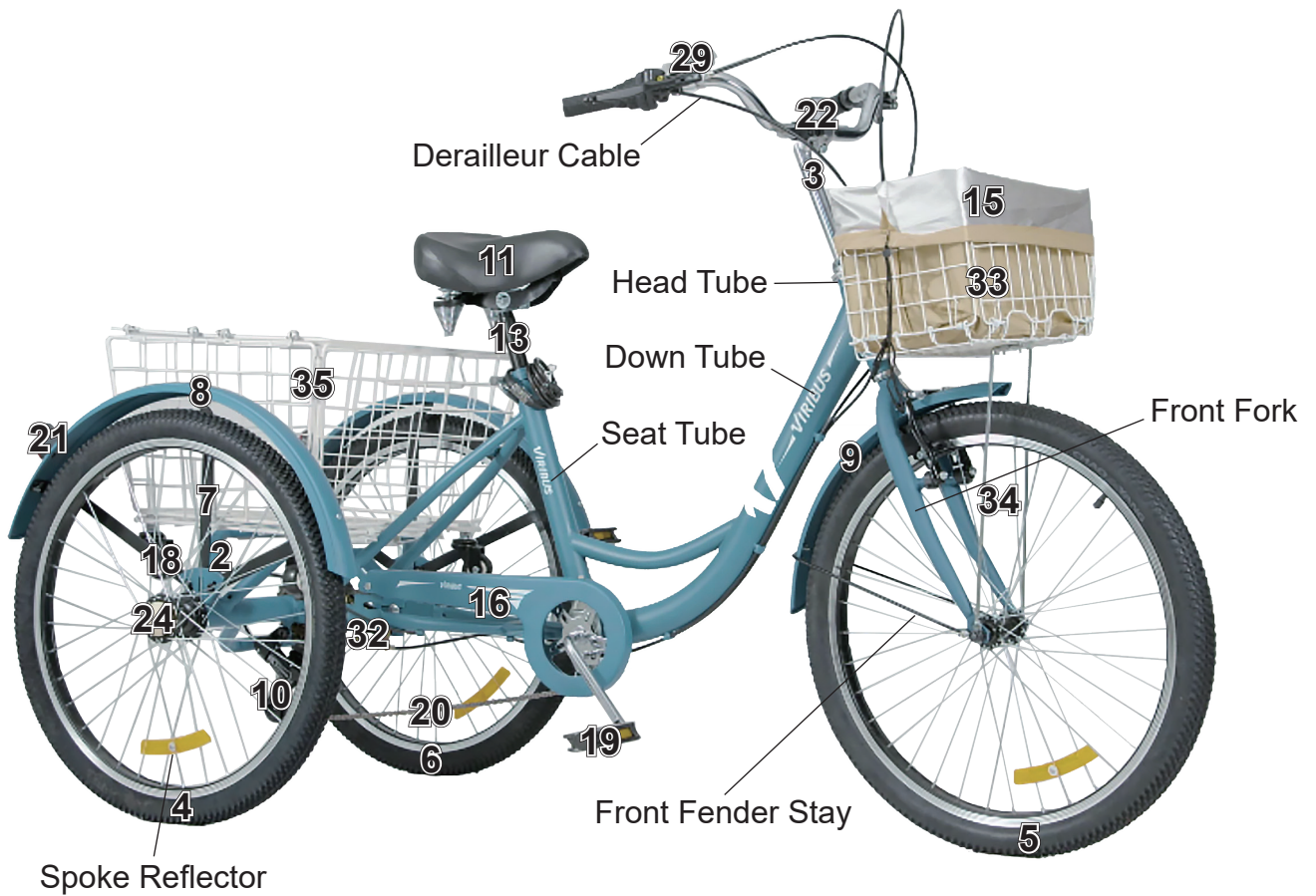
- Check whether the brakes are positioned properly before riding.
- Regularly check the reflectors to make sure that they are clean, straight, unbroken, and securely mounted. Riding without reflectors is extremely dangerous.
- Regularly check whether all fasteners and components are securely tightened.
- If any part does not operate properly, discontinue use until its replacement.
- Replace worn or broken parts immediately, especially bent or broken spokes and bent or damaged wheel rims.

Sensible Use

- Be mindful of your speed. Ensure you have sufficient room to brake in an emergency.
- Allow more distance for braking when riding through leaves, loose gravel, or other debris as these can also affect the stopping power of your brakes.
- **DO NOT** carry packages or objects on your tricycle in a way that obstructs your view of the road.

Package List





Item	Name	Qty.
1	Main Frame	1
2	Rear Frame	1
3	Handlebars	1
4	Right Rear Wheel with D-Shaped Slot	1
5	Front Wheel	1
6	Left Rear Wheel with O-shaped Slot	1
7	Rear Fender Stays	2
8	Rear Fenders	2
9	Front Fender with Stay	1
10	Rear Derailleur	1
11	Saddle	1
12	Locking Pin	1
13	Saddle Post	1
14	Derailleur Cable Outer Casings	2
15	Bag	1
16	Chain Guard	1
17	Cable Lock	1
18	Casters	4
19	Pedals	2
20	Chain	1

Item	Name	Qty.
21	Rear Reflectors	2
22	Front Reflector	1
23	Front Reflector Holder	1
24	Rear Wheel Caps	2
25	Phillips Bolts	4
26	M5 Nuts	2
27	Square Slat	1
28	Oval Slat	1
29	Bell	1
30	M16 Nut	1
31	Wheel Washer	1
32	Spring	1
33	Front Basket	1
34	Front Basket Support	1
35	Rear Basket	1
36	Rear Basket Handle	1
37	Rear Basket Supports	2
38	Phillips Screwdriver	1
39	Adjustable Wrench	1
40	3mm Hex Wrench	1
41	5mm Hex Wrench	1
42	6mm Hex Wrench	1

Not Included but Helpful:

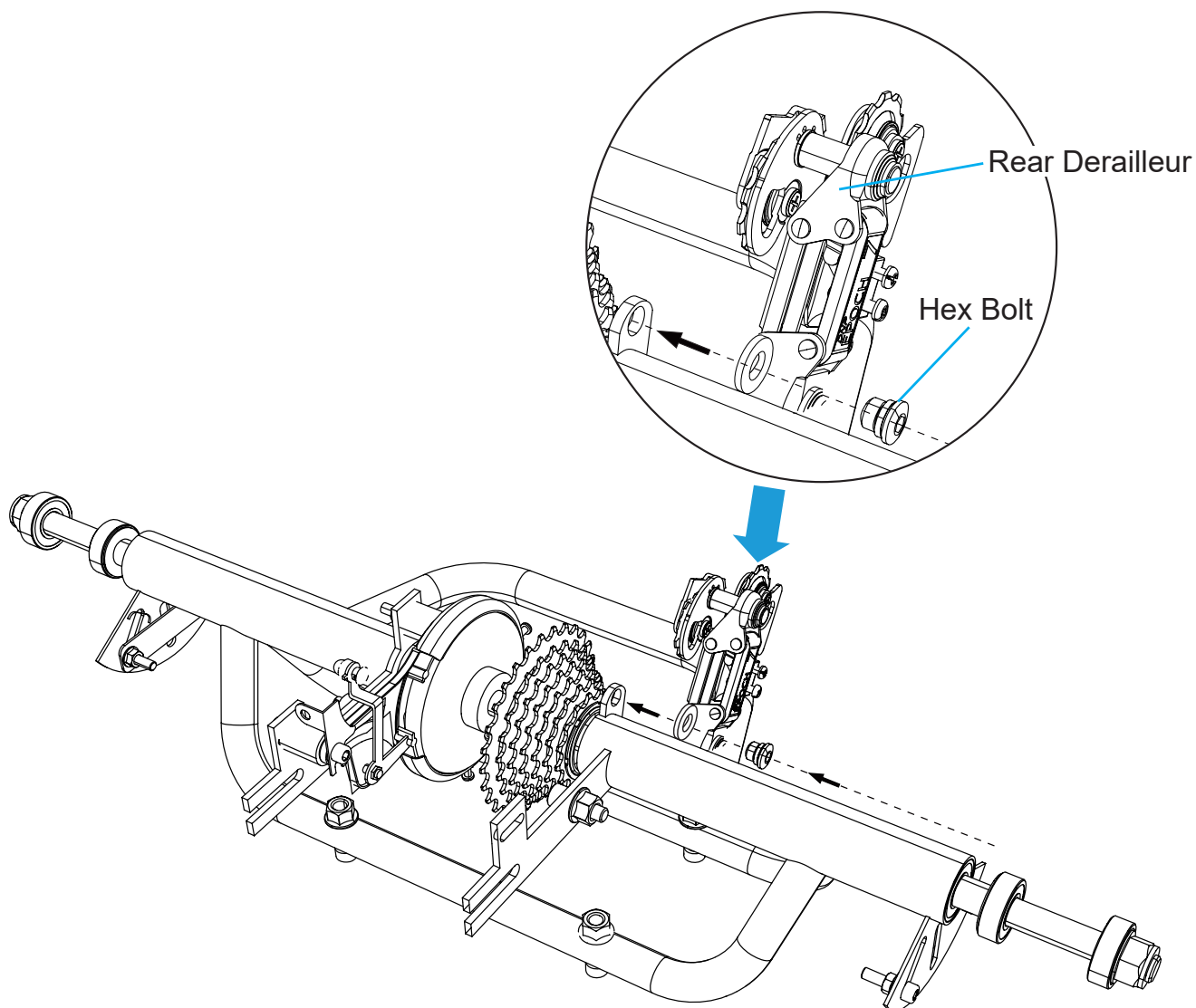
- Pliers

For your convenience, all bolts, nuts, and washers, except those for the right rear wheel and front basket, are pre-installed where they will be needed. During assembly, simply remove the fasteners as needed and keep them nearby. Reinstall them to connect each part as you go and tighten them securely for a safe and satisfactory experience.

Assembly

To see these instructions in video form, go to our YouTube channel **Viribus Bikes** and search for “Viribus 7-Speed Adult Tricycle with Wheeled Rear Basket”.

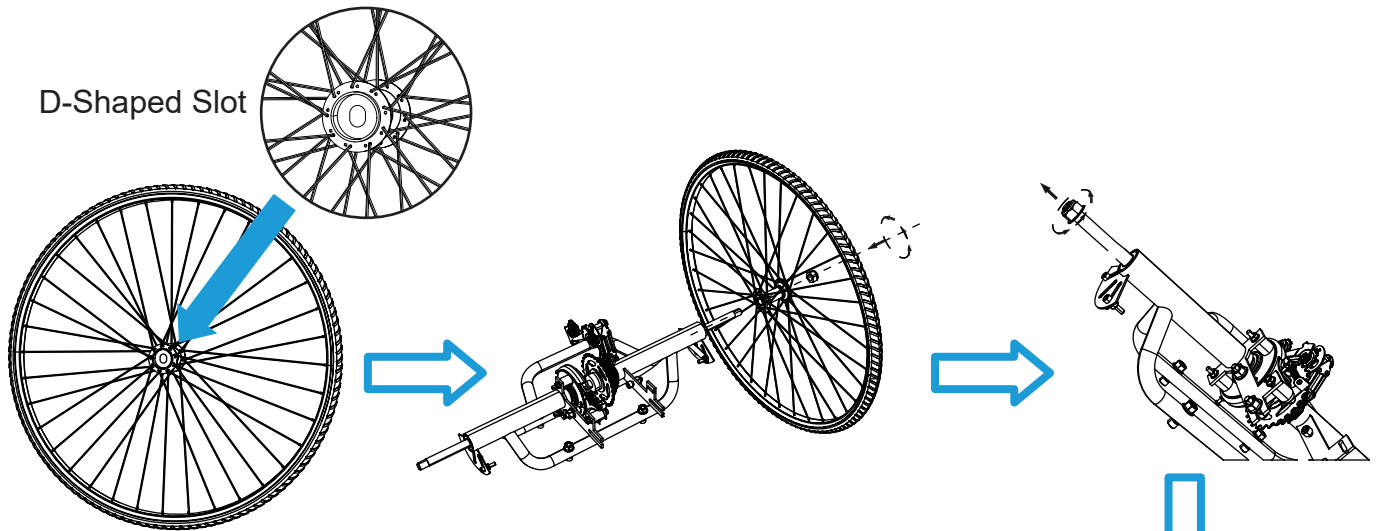
1. Installing the Rear Derailleur



1. Secure the rear derailleur (10) to its slot on the rear frame (2) as shown.
2. Tighten the hex bolt with the 5mm hex wrench (41).

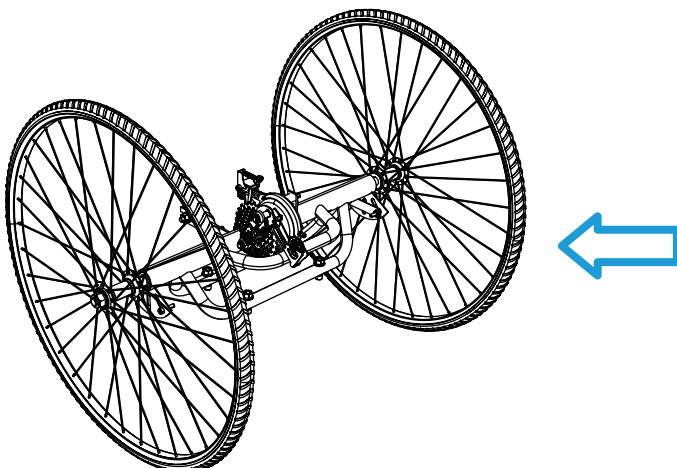
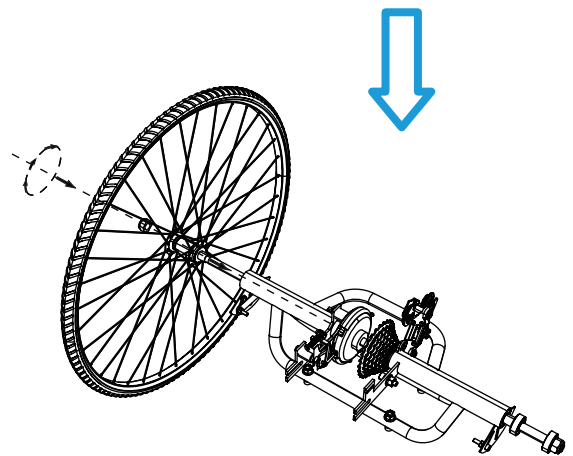
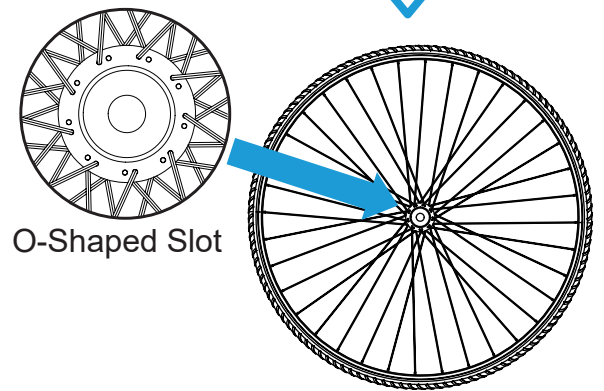
Note: Make sure the derailleur is **TIGHTLY** secured. Otherwise, the installation of the chain will be impacted.

2. Installing the Rear Wheels

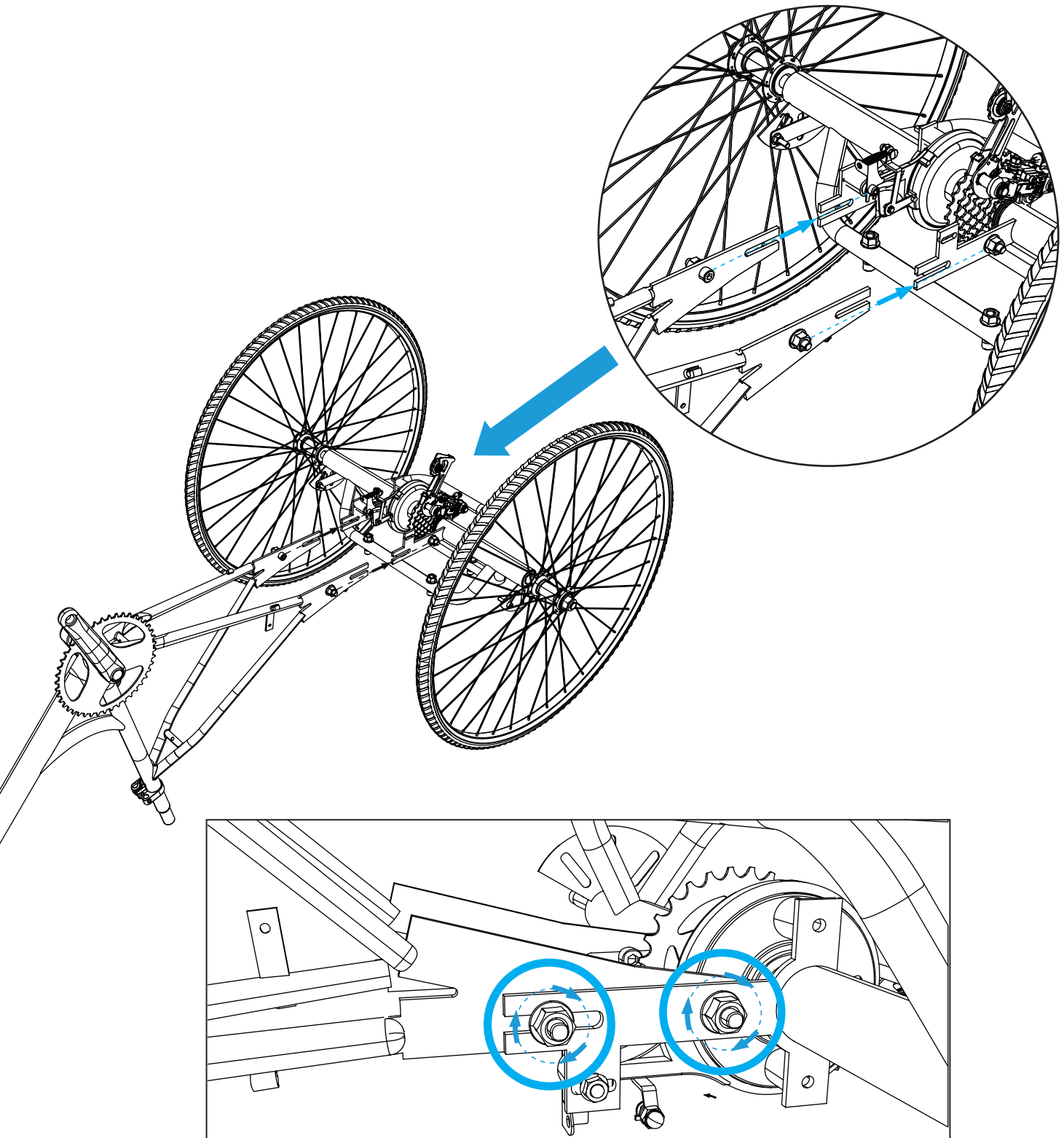


Note: The two rear wheels **ARE** different and should **NOT** be mixed up. The wheel with the O-shaped slot goes with the O-shaped hub on the rear axle while the wheel with the D-shaped slot goes with the D-shaped hub.

1. Remove the protective cover from the D-shaped hub.
2. Connect the right rear wheel (4) with the D-shaped slot to the D-shaped hub.
3. Secure the right rear wheel with the wheel washer (31) and M16 nut (30), tightening the nut with the adjustable wrench (39).
4. Remove the nut and washer from the O-shaped hub. Place them nearby.
5. Connect the left wheel (6) with the O-shaped slot to the O-shaped hub.
6. Replace the washer and nut, tightening the nut with the adjustable wrench.



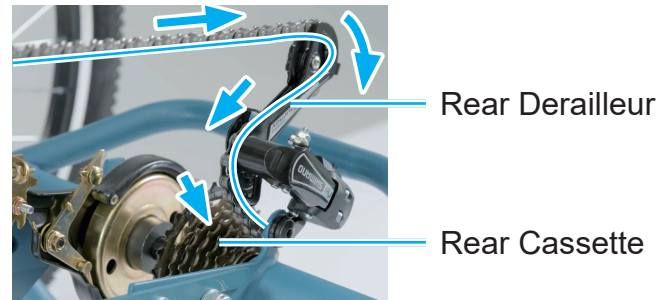
3. Connecting the Main and Rear Frames



1. Place the rear frame vertically on a firm level surface.
2. Remove the 2 sets of nuts, washers, and bolts from the slots on both sides of the rear frame. Place them nearby.
3. Flip the main frame (1) over and slide it onto the rear frame, aligning their slots with each other as shown. For best results, start with either side and repeat for the other side.
4. Replace the bolts, washers, and nuts, tightening the nuts with the adjustable wrench.

4. Installing the Chain

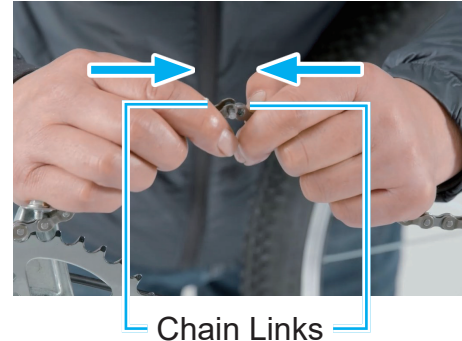
1. Pass one end of the chain (20) through the guide pulley of the rear derailleur, arranging the chain in an S shape.
2. Run the chain around the rear cassette.



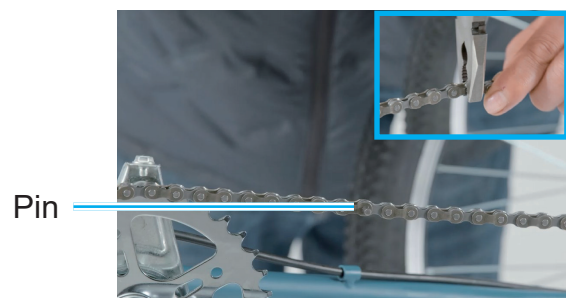
3. Position the other end of the chain around the front cog.



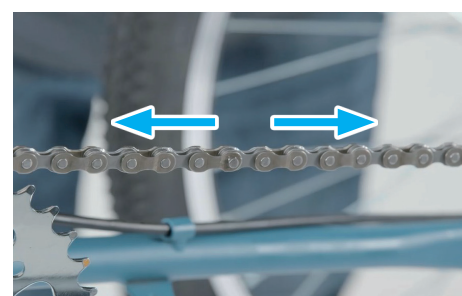
4. Pull both ends of the chain together to see if the length is suitable.
5. If the chain is too long, use a chain tool (not included) to push out the pins connecting the links you want to remove until the chain is the appropriate length.
6. Join both ends of the chain using the chain links.



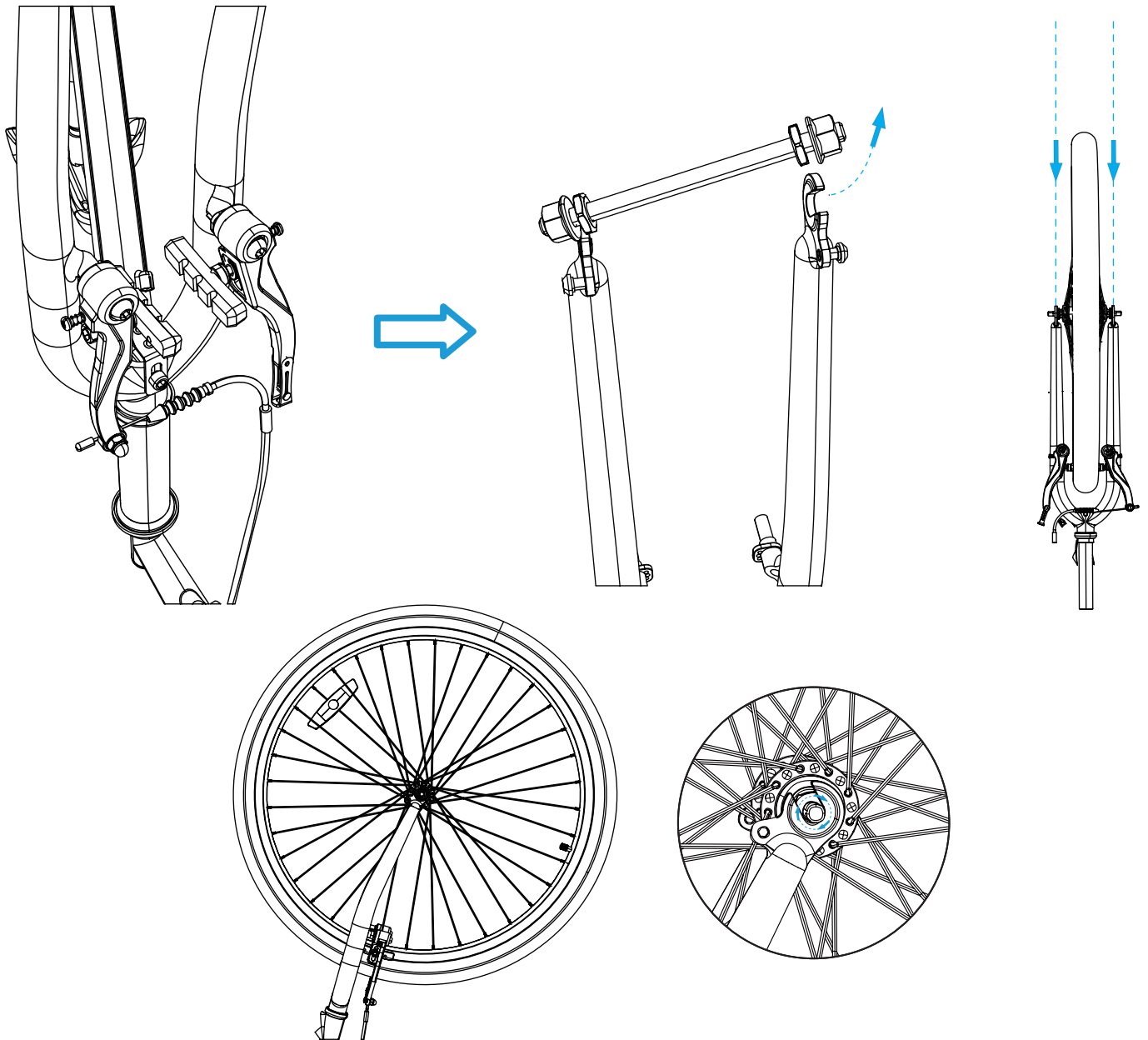
7. Use pliers (not included) to press in the pin connecting the links.



8. Pull the chain taut with both hands, testing that it cannot be torn apart.
9. Tighten all the nuts connecting the main and rear frames completely.
10. Test that the chain move freely by rotating either crank arm.

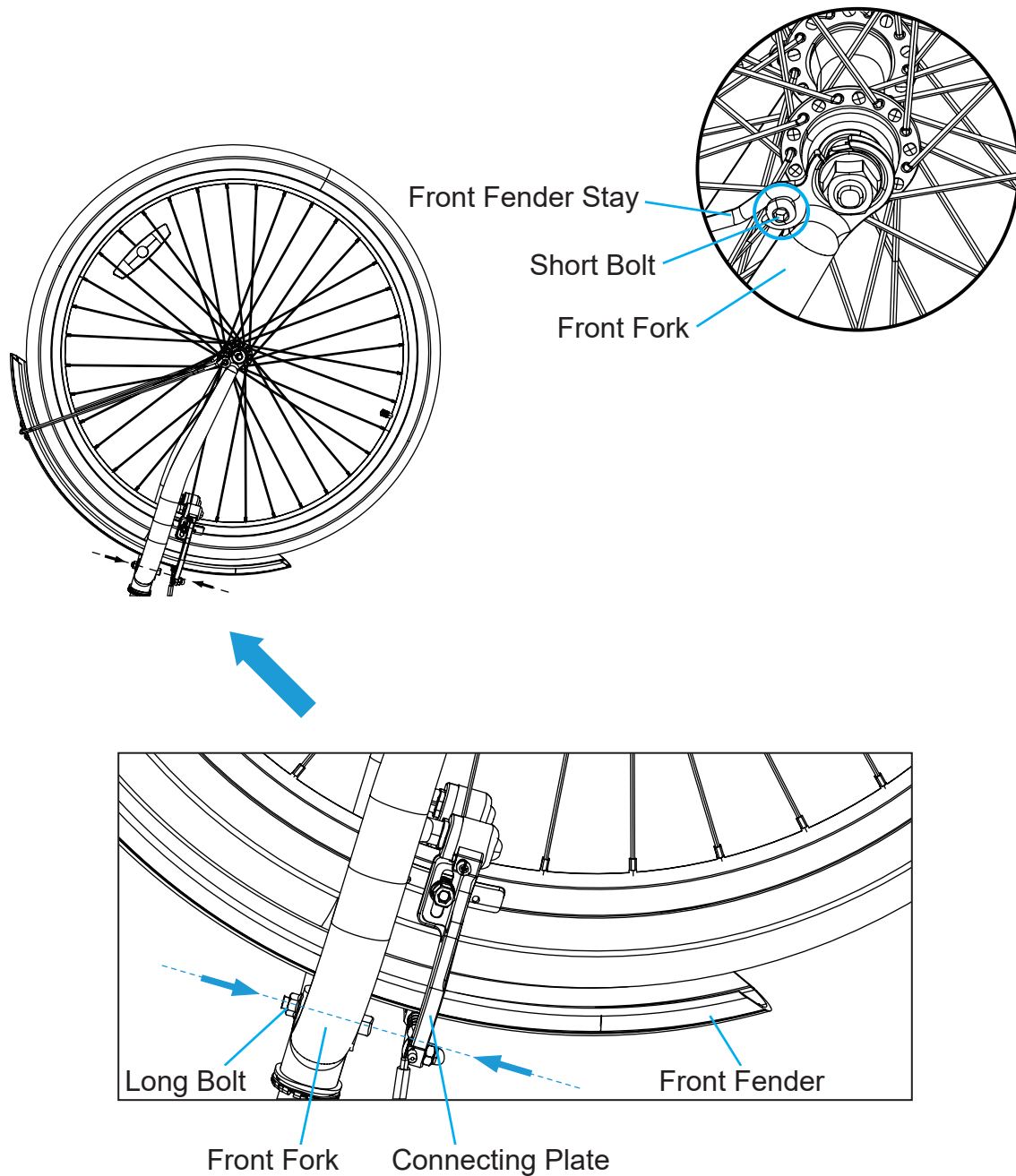


5. Installing the Front Wheel



1. Press and disconnect the V-shaped front brake on the main frame's front fork.
2. Unscrew the locking nuts on the protective bar and remove the bar from the front fork.
3. Remove the 2 retaining clips from the front fork's tips. Place them nearby.
4. Remove the 2 sets of protective covers, nuts, and washers from the hub of the front wheel (5). Place the nuts and washers nearby.
5. Fit the front wheel into the front fork.
6. Replace the retaining clips.
7. Connect the front basket support (34) to the front wheel hub as shown.
8. Replace the washers and nuts, tightening the nuts with the adjustable wrench.

6. Installing the Front Fender



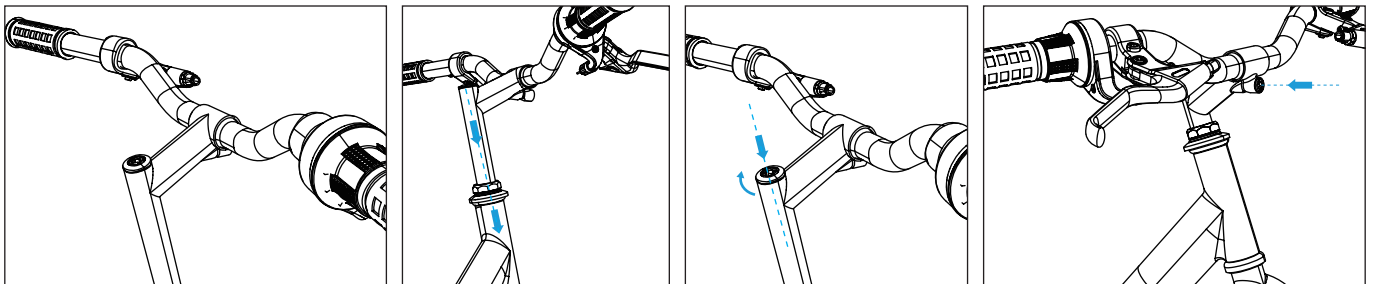
1. Remove the nut and long bolt from the front fork's top and the 2 short bolts from its tips. Place them nearby.
2. Fit the front fender (9) into the front fork, aligning the hole on its connecting plate with the fork's top hole.
3. Replace the long bolt and nut, partially tightening them.
4. Align the slots on the front fender stay with those on the fork's tips.
5. Replace the short bolts, tightening them with the Phillips screwdriver (38).
6. Continue to tighten the long bolt with the Phillips screwdriver until the front fender is locked in place.

7. Installing the Chain Guard



1. Remove the 3 bolts from the guard supports near the front and rear sprockets with the Phillips screwdriver. Place them nearby.
2. Place the chain guard (16) onto its supports and over the chain as shown.
3. Replace the bolts, tightening them with the Phillips screwdriver.
4. Rotate the chain to see if it rubs against the guard. If it does, readjust the guard so that the chain moves freely.

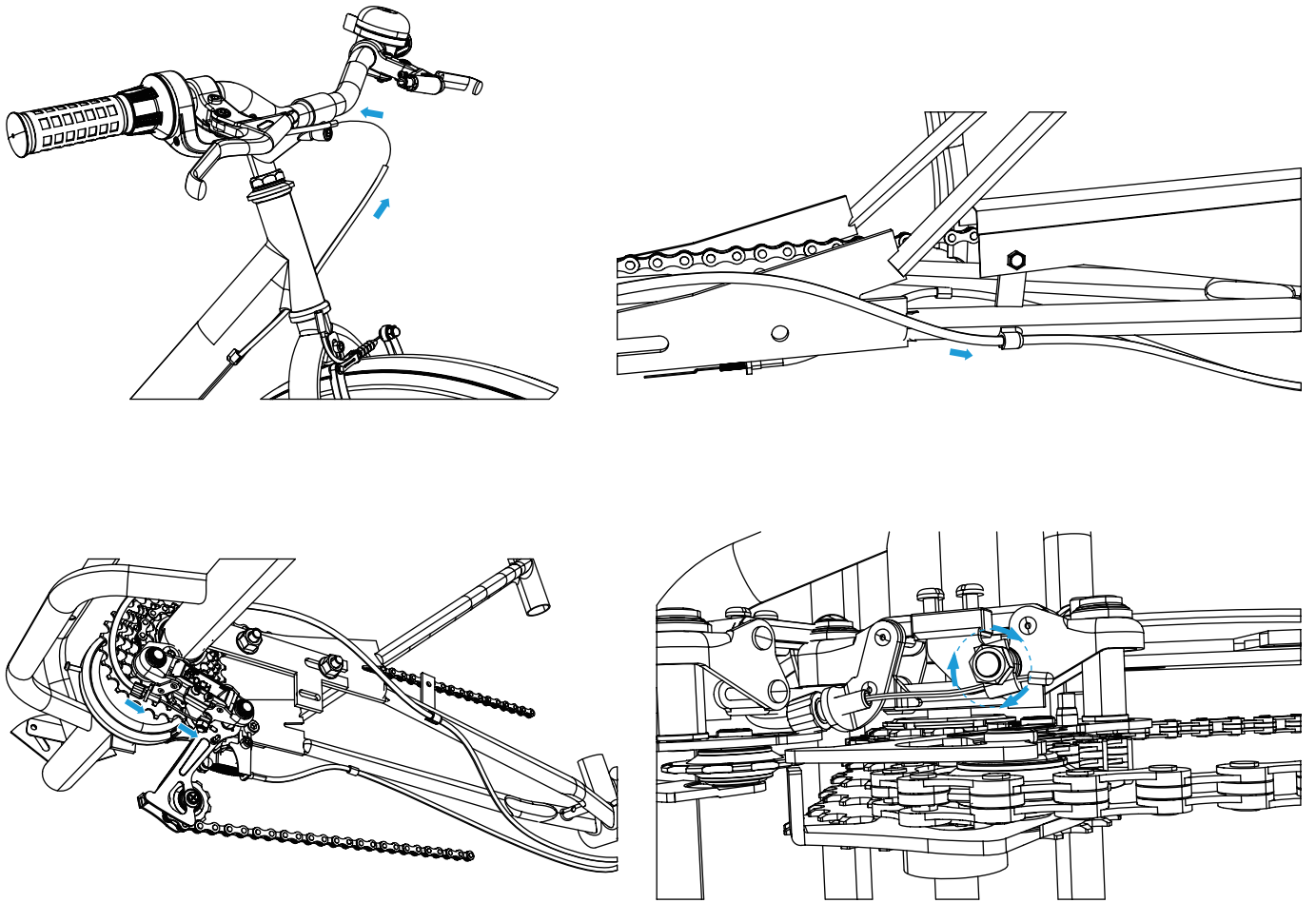
8. Installing the Handlebars



Note: Handle the exposed metal shaft carefully to avoid injury.

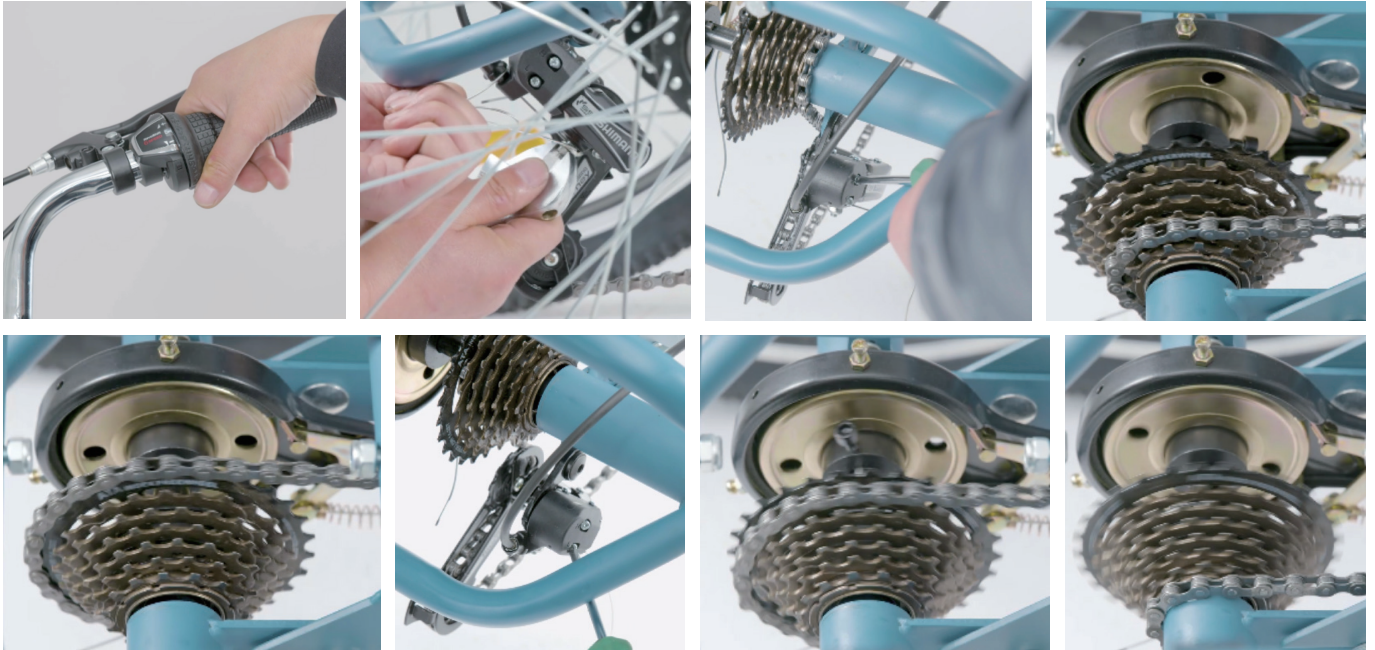
1. Turn the tricycle frame right side up.
2. Remove the protective cover underneath the stem of the handlebars (3).
3. Loosen the bolt on the top of the stem with the 6mm hex wrench (42).
4. Slide the stem into the head tube of the main frame, pressing and turning until it becomes secure.
5. Retighten the top bolt with the 6mm hex wrench.
6. Lift the handlebars to an appropriate position.
7. Tighten the bolt on the front with the 6mm hex wrench.

9. Installing the Derailleur Cable



1. Rotate the right handlebar to a convenient position, tightening its locking bolt with the 3mm hex wrench (40).
2. Thread the derailleur cable from the right handlebar into one of the outer casings (14).
3. Feed one end of this casing into the slots along the down tube and chain stay of the main frame.
4. Feed the other end of this casing into the slot on the right handlebar.
5. Thread the exposed part of the cable into the other casing, feeding this casing into the slot on the chain stay.
6. Pass the cable through the barrel adjuster on the rear derailleur.
7. Loosen the nut on the derailleur, position the cable behind its washer, and retighten the nut with the adjustable wrench.
8. Knot the remaining exposed cable appropriately.

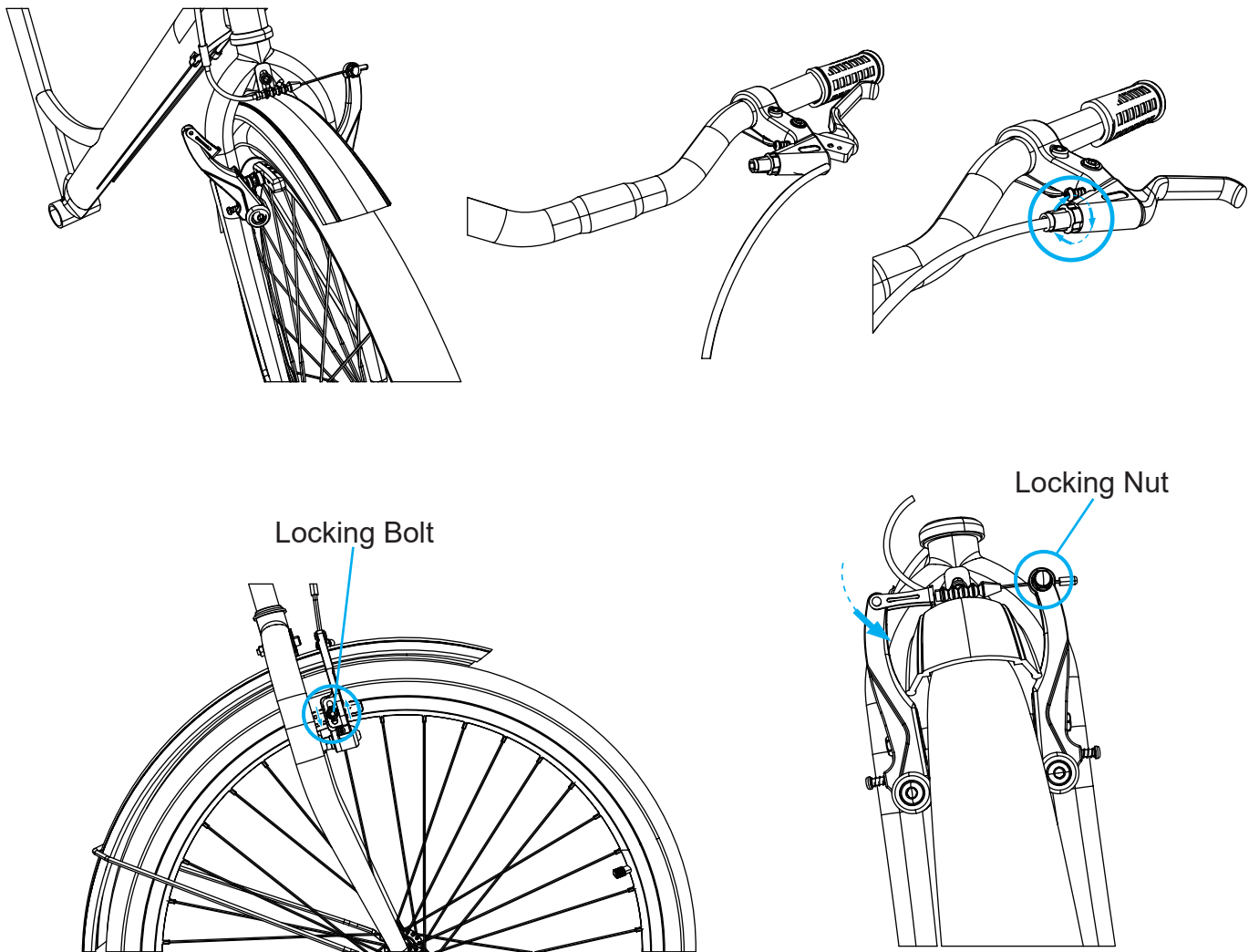
Adjusting the Derailleur



If there is any shifting problem, adjust the high-limit and low-limit screws. The low-limit screw (marked **L**) determines how far the derailleur will travel toward the wheel of the tricycle. The high-limit screw (marked **H**) determines how far the derailleur will travel away from the wheel.

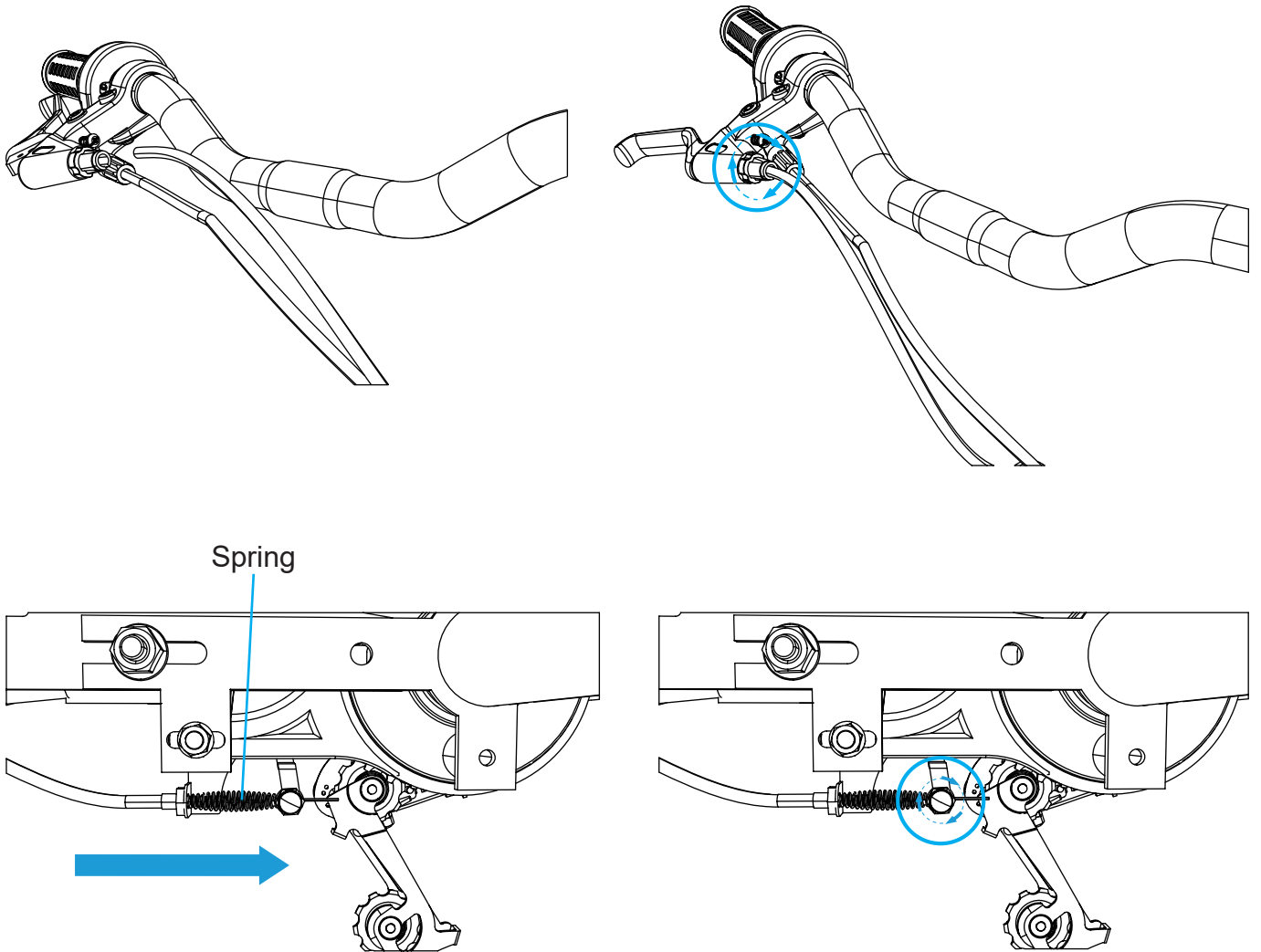
1. Make sure the derailleur's nut is fully tightened.
2. Tune the rear derailleur to the highest gear setting by turning the right handlebar.
3. Place the chain on the smallest sprocket.
4. Adjust the high-limit screw with the Phillips screwdriver so the guide pulley and the smallest cog are lined up.
5. Shift through the gears, making sure each gear is smooth for use. If necessary, use the barrel adjuster to fine tune each gear by turning it in the direction you want the chain to go. That is, turn clockwise to loosen cable tension and move the chain away from the wheel and turn counterclockwise to tighten cable tension and direct the chain towards the wheel.
6. Tune the derailleur to the first gear and place the chain on the largest cog.
7. Adjust the low-limit screw in quarter-turn increments until the guide pulley and the largest cog are aligned vertically.
8. Again, shift through each gear several times, checking that each gear operates smoothly. It may take several attempts before the derailleur is properly adjusted.

10. Installing the Front Brake Cable



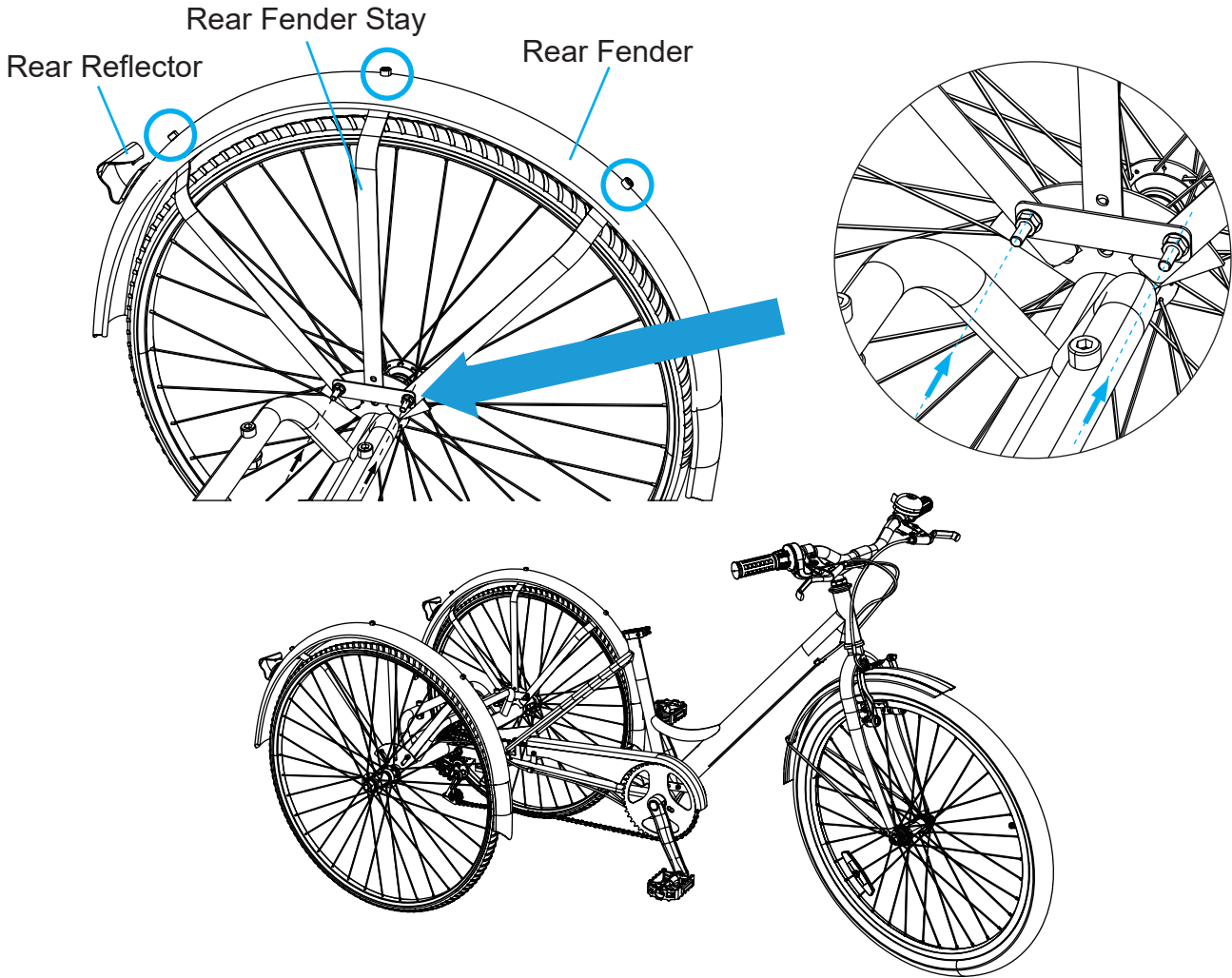
1. Make sure the V-shaped front brake is disconnected as shown.
2. Pass the round metal head of the front brake cable through the appropriate brake handle. (Left in the United States and right in the United Kingdom.)
3. Feed the cable's outer casing into the brake handle, tightening its locking nut.
4. Fit the cable into the slot of the front brake.
5. Position the brake pads over the front wheel's rim, tightening their locking bolts with the 5mm hex wrench. (Do not allow them to touch the tire.)
6. Making sure the cable is taut, press the front brake and tighten its locking nut with the adjustable wrench.
7. Test the front brake by pressing the corresponding brake handle.
8. Tighten the side bolts with the Phillips screwdriver.

11. Installing the Rear Brake



1. Pass the round metal head of the rear brake cable through the appropriate brake handle. (Right in the United States and left in the United Kingdom.)
2. Feed the cable's outer casing into the brake handle, tightening its locking nut.
3. Feed the rear brake cable through the spring (32) and past the cable clamp.
4. Tighten the locking nut of the cable clamp with the adjustable wrench.
5. Test the rear brake by pressing the corresponding brake handle and pushing the tricycle forward.

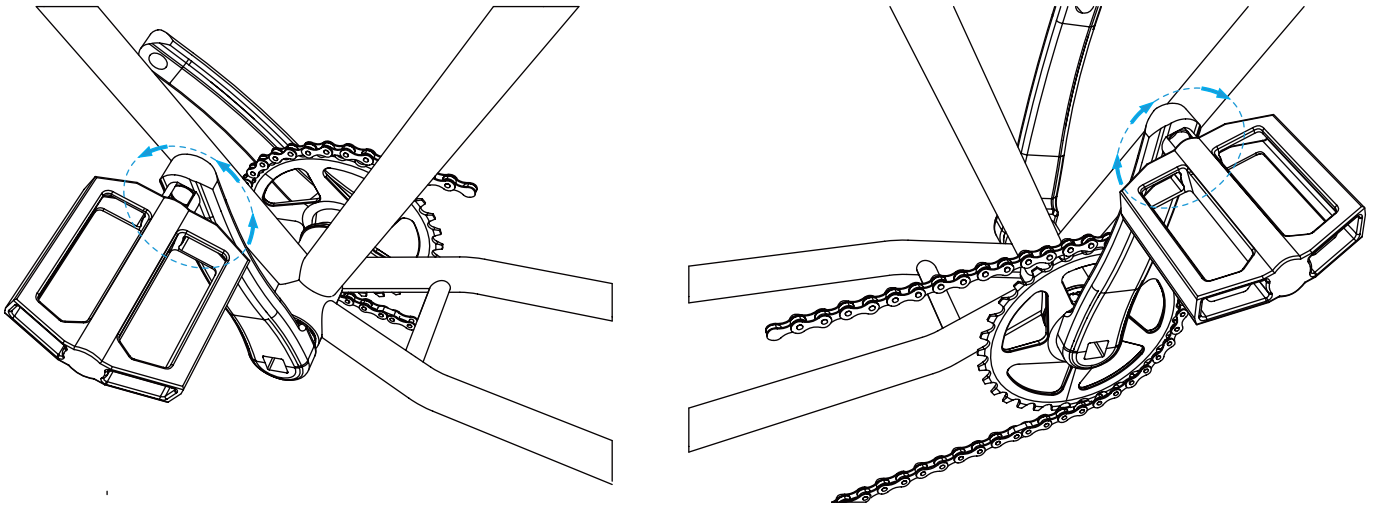
12. Installing the Rear Fenders, Stays, and Reflectors



Note: The two sets of rear fender stays (7) and rear reflectors (21) are the same. They can be used on either rear fender (8). The two rear fenders are the same. They can be used above either rear wheel.

1. Remove the 2 sets of nuts and bolts from one rear fender stay. Place them nearby.
2. Fit the rear fender stay onto either side plate of the rear frame, aligning their holes and taking care not to allow the stay to touch the tire or wheel rim.
3. Replace the bolts and nuts, tightening them with the Phillips screwdriver and adjustable wrench.
4. Remove the nut from one rear reflector's bolt. Place it nearby.
5. Attach the rear reflector to one rear fender.
6. Replace the nut, tightening it with pliers (not included).
7. Remove the 3 bolts from the rear fender stay's tips.
8. Mount the rear fender onto the stay's tips, aligning their holes.
9. Replace the bolts, tightening them with the Phillips screwdriver.
10. Install the other rear fender, stay, and reflector following the same steps.

13. Installing the Pedals

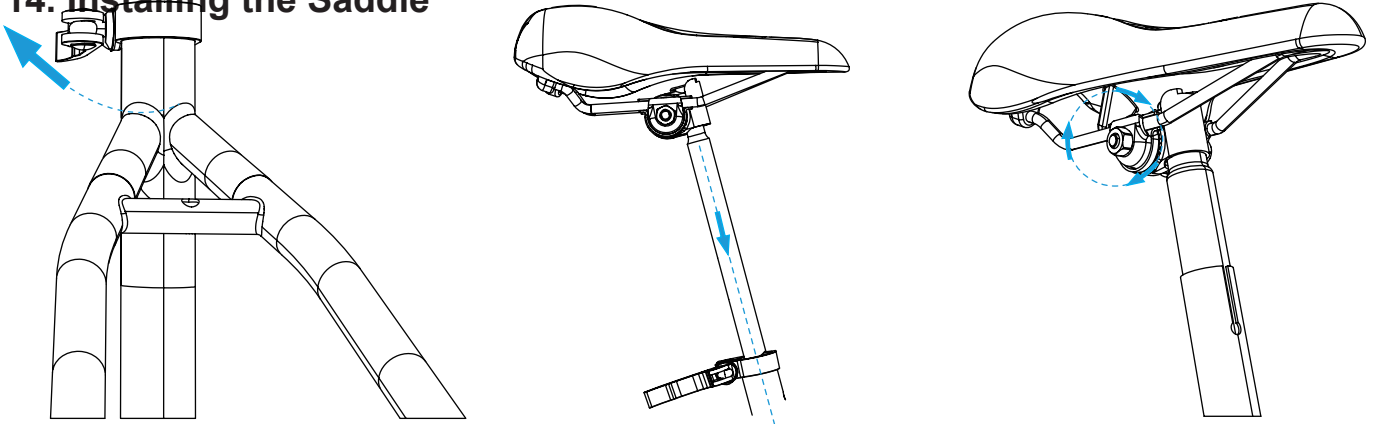


Note:

Identify the separate pedals (19), which **ARE** different and should **NOT** be mixed up. The left pedal is marked with **L** and the right with **R**. The threads on the two pedals are opposite, twisting in the wrong direction may damage the pedal threads.

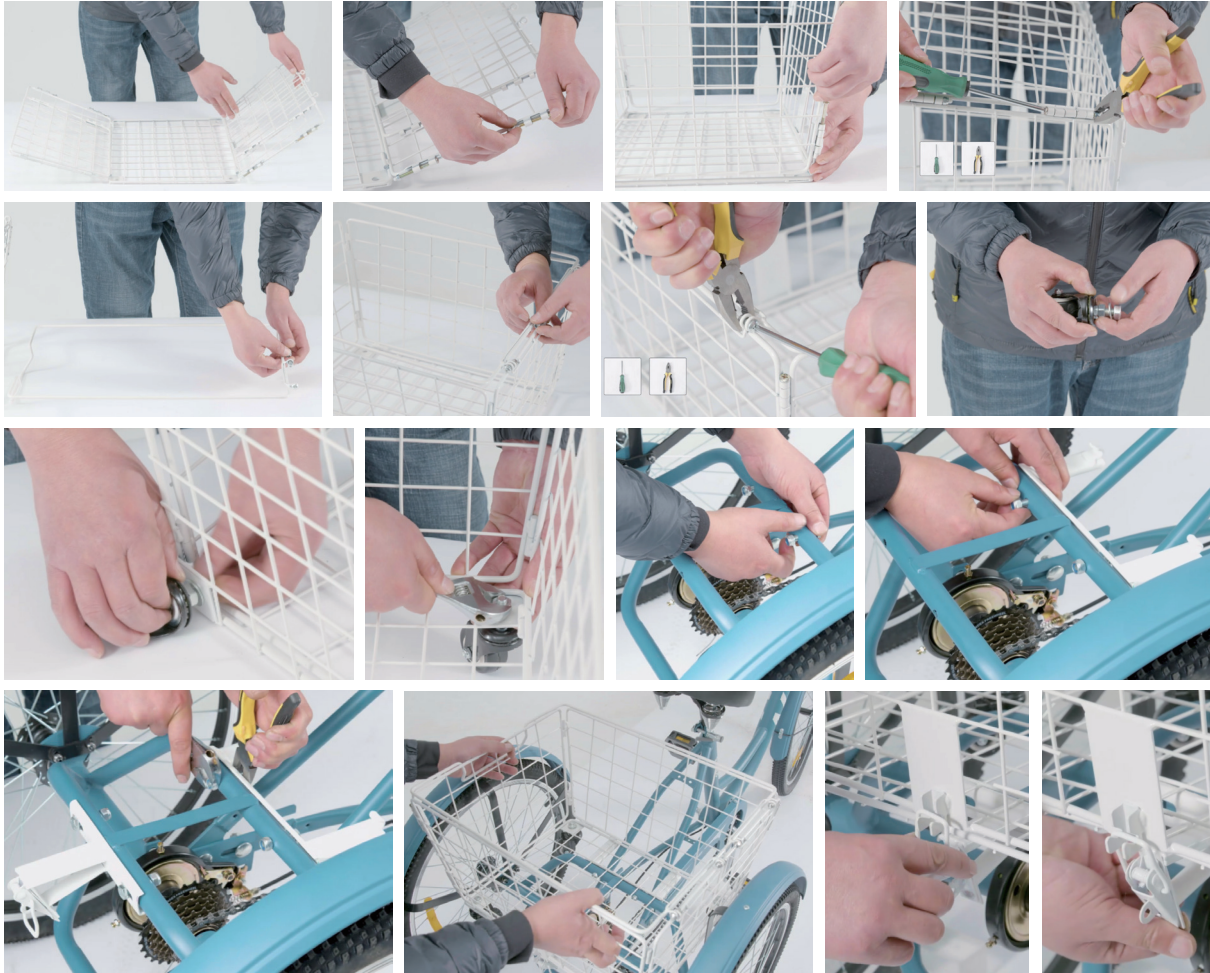
1. Attach the pedals to the crank arms on the appropriate side, screwing them into place.
2. Tighten their locking nuts with the adjustable wrench.
3. Test that the chain turns smoothly while using the pedals. Adjust as needed.

14. Installing the Saddle



1. Remove the handle from the locking pin (12). Pass the pin through the top of the seat tube and replace its handle.
2. Insert the saddle post (13) into the seat tube until your preferred height is reached.
3. Turn the handle of the locking pin clockwise until the saddle post is locked in place.
4. Place the saddle (11) onto the saddle post, rotating it until your desired angle is reached.
5. Tighten the locking bolt underneath the saddle with the adjustable wrench.

15. Installing the Rear Basket



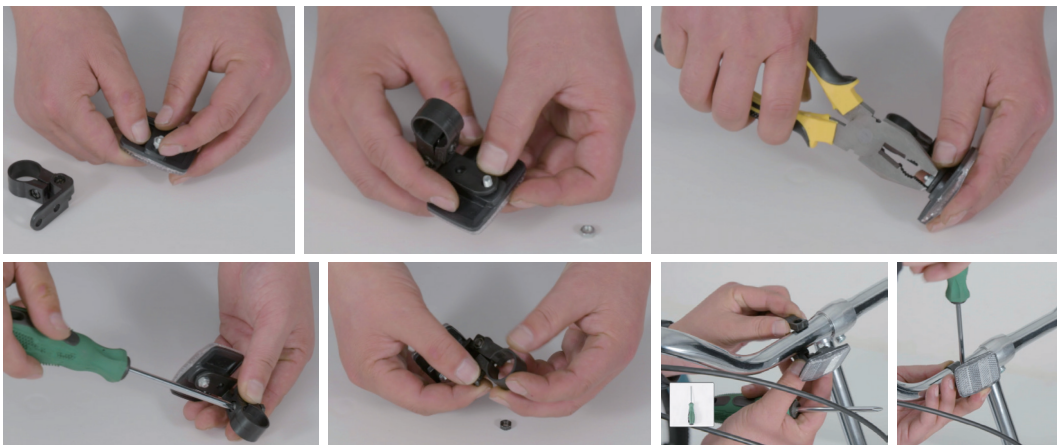
1. Unfold the five sides of the rear basket (35).
2. Remove all nuts and bolts from the basket. Place them nearby.
3. Connect each side of the basket by replacing these fasteners and tightening them with the Phillips screwdriver and your pliers.
4. Remove all nuts and bolts from the rear basket handle (36). Place them nearby.
5. Fit the basket handle onto the basket frame, aligning their slots with each other.
6. Replace the bolts and nuts, tightening them with the Phillips screwdriver and your pliers.
7. Remove the nuts from the bolts on the casters (18). Place them nearby.
8. Attach the casters to the corners of the basket using their bolts.
9. Replace the nuts, tightening them with the adjustable wrench.
10. Remove the 4 sets of nuts and bolts from the rear frame as shown.
11. Place the rear basket supports (37) onto the rear frame, aligning their slots with each other.
12. Replace the bolts and nuts, tightening them with the adjustable wrench and your pliers.
13. Place the rear basket onto the rear frame and its supports, securing it with the attached latches.

16. Installing the Front Basket



1. Unfold the 5 sides of the front basket (33).
2. Fit the front basket onto its support, being sure the support is between its bottom holes while its side slots align with those on its metal holder located on the top of the head tube.
3. Attach the oval slat (28), two of the Phillips bolts (25), and the M5 nuts (26) to the side slots, tightening the nuts as shown.
4. Place the square slat (27) underneath the basket's bottom holes and attach the other two Phillips bolts as shown.
5. Tighten all these bolts with the Phillips screwdriver.

17. Installing the Front Reflector



1. Remove the nut from the bolt on the front reflector (22).
2. Connect the front reflector to the front reflector holder (23).
3. Replace the nut, tightening it with your pliers.
4. Remove the nut and bolt from the clamp of the front reflector holder as shown.
5. Fit the front reflector onto a convenient place on the handlebars using its holder's clamp.
6. Replace the bolt and nut, tightening the bolt with the Phillips screwdriver.

18. Installing the Bell



1. Remove the bolt from the clamp of the bell (29).
2. Fit the bell onto a convenient place on the handlebars using its clamp.
3. Replace the bolt, tightening it with the Phillips screwdriver.

19. Installing the Rear Wheel Caps



1. Attach the rear wheel caps (24) to the rear wheel hubs.
2. Press and tap the caps until they are locked in place.

20. Installing the Bag



1. Place the bag (15) into the front basket.
2. Open the bag and fit the fabric onto the 5 sides of the basket frame.

Maintenance

- Check the parts of the tricycle for any looseness, wear, or damage after use. Tighten, repair, or replace any problematic parts before further use.
- The exterior of the tricycle can be cleaned with a soft damp cloth. Do not use abrasive or caustic chemicals.
- Lubricate the chain and any moving part using a standard bike lubricant as needed.
- If the tricycle will not be used for an extended period of time, store in a cool dry place inaccessible to children.



Contact Us

Thank you for choosing our products! If you have any questions or comments, contact us at contact@b2ccsonline.com and we'll resolve your issue ASAP!

For a .pdf copy of the latest version of these instructions, use the appropriate app on your smartphone to scan the QR code to the right.



FTB-724K-BP FTB-724K-GR FTB-724K-PR FTB-724M-BL FTB-724M-GR FTB-724M-GY
FTB-724M-RD FTB-726K-BP FTB-726K-GR FTB-726K-PR FTB-726M-BL FTB-726M-GR
FTB-726M-GY FTB-726M-RD FTB-726K-GB

Rev. 26 Sept. 2024