

Adult Tricycle User Manual



Read Carefully Before Use
Keep for Future Reference

CONTENTS

Safety Information	1
General Notice	1
Traffic Rules	1
Clothing	1
Safety Checks	2
Sensible Use	2
Package List	4
Parts Diagram	4
Assembly	6
Rear Wheels	6
Chain and Rear & Main Frames.....	7
Front Wheel and Brake Disc	8
Handlebars.....	9
Front Brake Caliper	9
Rear Brake	10
Rear Reflectors	10
Rear Fenders and Stays	11
Front Fender and Stay	12
Chain Guard.....	13
Rear Basket	13
Pedals	14
Saddle	15
Wheel Caps.....	16
Cable Tie	16
Speed Gearing Adjustment	17
Maintenance	17
Basic Maintenance.....	18
Lubrication Schedule.....	18
Parts Maintenance	19
Hub Bearings	20

Inflating the Tire Tube.....	21
Repairing A Flat Tire.....	21
Troubleshooting	24

Safety Information

Warning

General Notice

- Read **ALL** these instructions completely before assembly and use. Contact customer service if any point is unclear.
- Provide this manual to anyone who will use this tricycle and provide it with this tricycle (whether already assembled or not) if it is ever given or sold to a third party.
- **ONLY** assemble and use this tricycle following these instructions. Failure to do so may lead to serious property damage and severe personal injury.

Traffic Rules

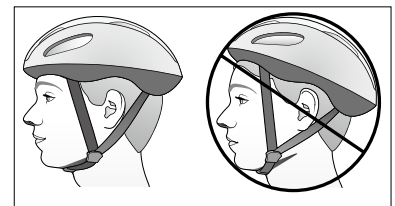
- **ALWAYS** obey **ALL** applicable local and national laws and regulations while riding.
- **DO NOT** allow use by children, by persons unfamiliar with this tricycle or these instructions, or by anyone whose physical or mental impairment precludes safe use.
- **DO NOT** ride this tricycle while tired or under the influence of drugs or medication.
- **DO NOT** ride this tricycle in areas where electric tricycles are prohibited.
- **ALWAYS** maintain your reflectors and other required safety equipment.
- It is advisable to equip your tricycle with a warning device such as a horn, bell, and light in case you are riding at times of poor visibility. This is **EVEN** required in some jurisdictions.

Clothing

- **ALWAYS** wear appropriate hand protection during assembly, disassembly, adjustment, or repair of this tricycle.
- **DO NOT** wear loose footwear or clothing that may become caught in the wheels or any other moving parts while riding.
- **DO NOT** ride this tricycle with bare feet.

ALWAYS wear closed-toe shoes with good traction to maintain grip on the pedals and provide protection for your feet.

- **ALWAYS** wear a helmet and other required protective gears that meet safety standards while riding.



- Gloves with grip padding are strongly recommended for riding, as they can strengthen your hold on the handlebars and protect your hands in case of a fall.
- Wear sunglasses or other clear protective eyewear to shield your eyes from dust, debris, and insects.
- In sunny conditions, it is advisable to apply sunscreen to exposed skin, especially for long rides.
- For best results, choose brightly colored or reflective clothing or attach reflective accessories or strips to your clothing to enhance visibility from all angles, especially during low-light conditions.



Safety Information

Safety Checks

- **ALWAYS** check that **BOTH** the front and rear brakes are positioned properly **BEFORE** riding. Even when power is cut to the motor, the inertia of the tricycle will often require active braking power.
- **ALWAYS** check that **ALL** components and fasteners are intact and securely tightened **BEFORE** and **AFTER** riding.
- Regularly check the reflectors to make sure that they are clean, straight, unbroken, and securely mounted. Also, perform this check for the front light.
Riding with low light or without lights or reflectors is **EXTREMELY** dangerous.
- **DO NOT** ride this tricycle if any part is damaged or shows any sign of malfunction. Repair or replace worn and broken components before further use, especially bent or broken spokes and wheel rims.
- **NEVER** replace any components or fasteners with nonidentical ones.

Sensible Use

- **ONLY** allow one person to use this tricycle at a time.
- **DO NOT** carry children in the rear basket while riding.
If carrying pets, ensure that this act is permitted in your jurisdiction and they are safely secured with comfort.
- **NEVER** ride at a speed where your stopping distance exceeds your visibility.
- For optimal safety, it is **NOT** recommended to ride your tricycle at night or in environments with poor visibility (e.g., foggy or snowy conditions).
If you have an emergency that makes it necessary, keep your light on and limit your speed appropriately.
- It is recommended that you **NOT** ride your tricycle fast **UNTIL** you are **FULLY** familiar with this new electric tricycle and its controls.
However, even when you are familiar with the tricycle, **ALWAYS** be mindful of your speed, ensuring that you have sufficient room to brake in an emergency.
- **DO NOT** ride this tricycle in extreme weather conditions, such as thunderstorms and hurricanes. If you meet with them during a ride, stop your tricycle, find a safe shelter, and wait until they pass.
- When meeting a strong wind, keep a firm grip on the handlebars, lean into the wind, and adjust your position as needed to maintain control.
- In wet weather, be careful to avoid sharp turns, which are easy to cause an accidental fall.

Safety Information

- **ALWAYS** be alert for people, animals, or any obstacles that may appear in front of you while riding your tricycle.

ALWAYS be careful of passing parked cars, whose doors might open suddenly.

ALWAYS be aware that pedestrians and drivers may not expect the speed or responsiveness of your tricycle. Adjust your behavior accordingly.

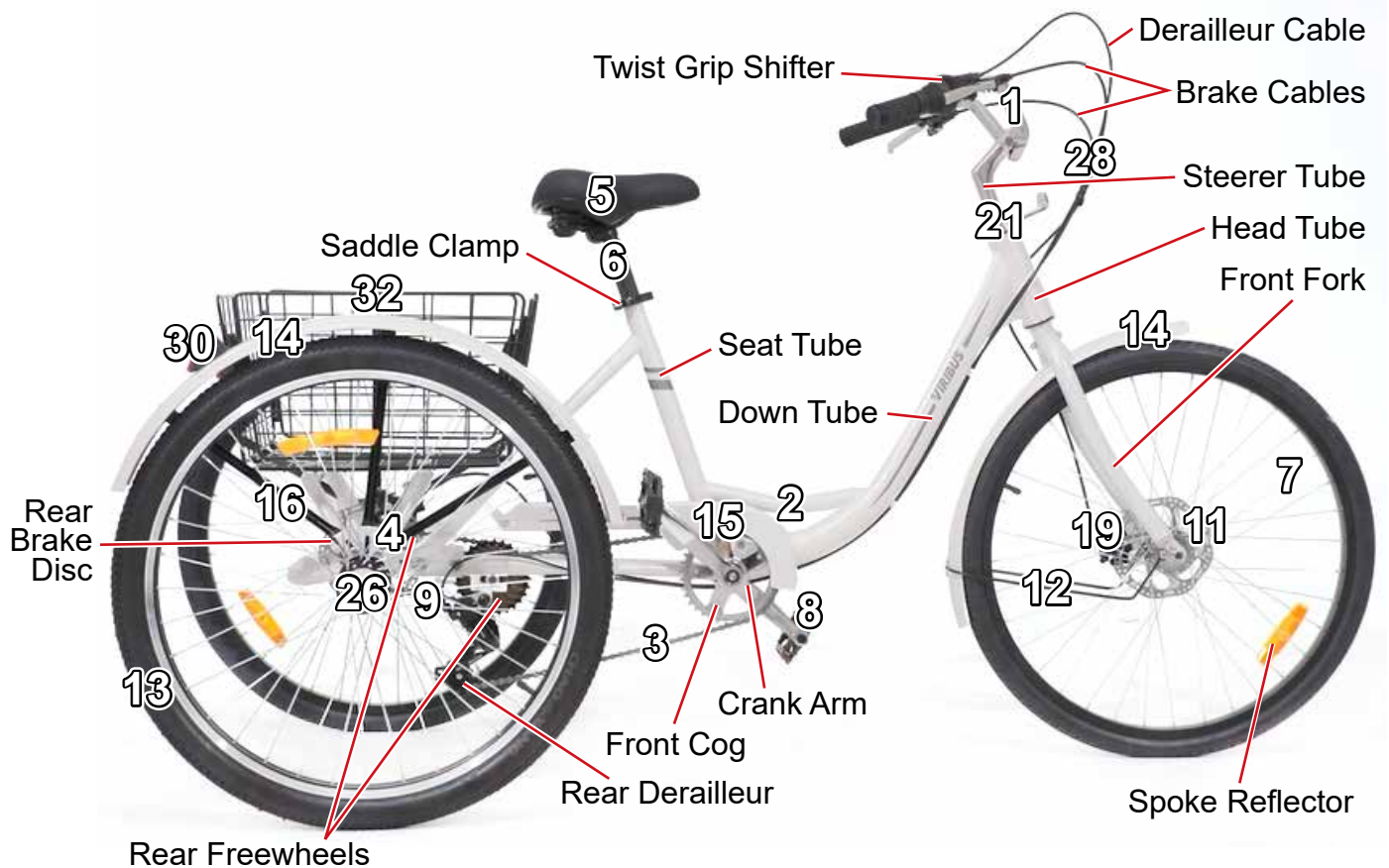
It is advisable to install warning devices to draw their attention, **BUT** always be ready to turn safely out of their way if needed.

- **ALWAYS** be careful at road and rail crossings. Slow down and check both ways for oncoming traffic.
- **DO NOT** ride this tricycle near precipices or on highly uneven, sandy, or sloped surfaces.
- **DO NOT** carry packages or objects on your tricycle in a way that obstructs your view of the road.
- **DO NOT** use harsh abrasives or caustic chemicals to maintain this tricycle.
- **DO NOT** load this tricycle with more than 330 pounds (150 kg), including 110 pounds (50 kg) in the rear basket.
- When inflating the wheel tires, **ALWAYS** maintain 40–65 psi (2.8–4.5 bar).

Package List



Parts Diagram



Item	Name	Qty.
1	Handlebars	1
2	Main Frame with Rear Derailleur	1
3	Long Chain	1
4	Rear Frame with Rear Brake Caliper & Disc	1
5	Saddle	1
6	Saddle Post	1
7	Front Wheel	1
8	Pedals	2
9	Short Chain	1
10	Fastener Packet	1
11	Brake Disc	1
12	Front Fender Stay	1
13	Rear Wheels	2
14	Wheel Fenders	3
15	Chain Guard	1
16	Rear Fender Stays	2
17	Slats	2
18	22 mm Wrench	1
19	Front Brake Caliper	1
20	Multifunctional Wrench	1
21	Headset Spacer	1
22	Front Wheel Caps	3
23	6 mm Hex Wrench	1
24	5 mm Hex Wrench	1
25	4 mm Hex Wrench	1
26	Rear Wheel Caps	2
27	18 mm Wrench	1
28	Cable Tie	1
29	Phillips Screwdriver	1
30	Rear Reflectors	2
31	Long Pins	2
32	Basket Frame	1


Not Included but Helpful:

- Pliers
- Adjustable Wrench

When you first get your new tricycle, carefully unpack all of the above-mentioned components and accessories. Check that nothing is missing or has been damaged in transit. Keep children away from the packaging or provide constant supervision. Storing your original packaging through the warranty period will speed returns if any are needed.

Assembly

To see these instructions in video form, go to our YouTube channel **Viribus Bikes** and search for “Double-Chain Adult Tricycle, ABR-R”.

 Wear hand and eye protection during assembly to prevent accidents.

1. Installing the Rear Wheels



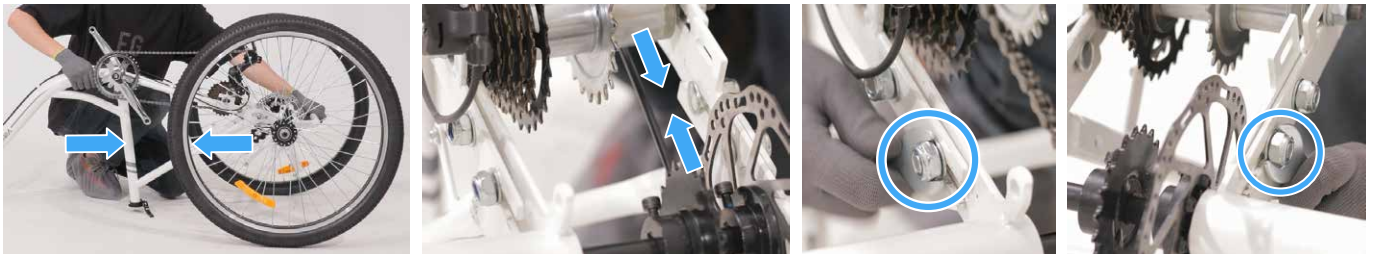
Note: The two rear wheels (13) **ARE** different and should **NOT** be mixed up. The wheel with the O-shaped slot goes with the O-shaped hub on the left side of the rear axle while the wheel with the D-shaped slot goes with the D-shaped hub on the right side.

1. Place the rear frame (4) vertically on a firm level surface.
2. Remove the nut and washer from the O-shaped hub on the left side by hand. Place them nearby.
3. Slide the spacer inwards as shown.
4. Connect the wheel with the O-shaped slot to the O-shaped hub.
5. Replace the washer and nut, tightening the nut with the 22 mm wrench (18).
6. Remove the nut and washer from the D-shaped hub on the right side. Place them nearby.
7. Connect the wheel with the D-shaped slot to the D-shaped hub.
8. Replace the washer and nut, tightening the nut in the same fashion.

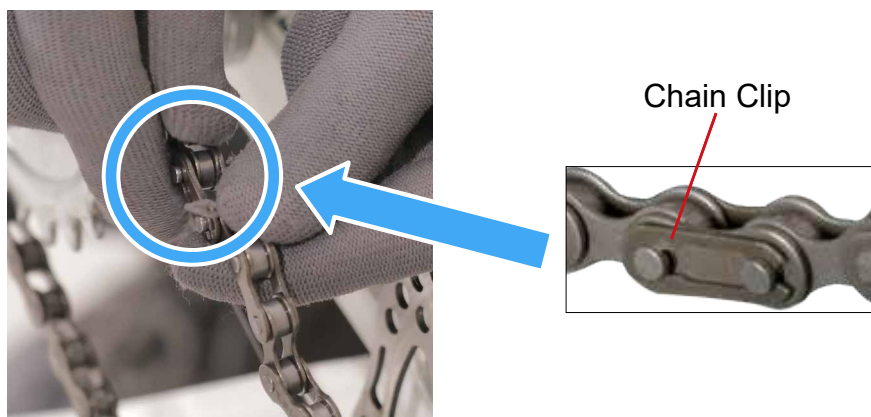
2. Installing the Chain and Connecting the Rear and Main Frames



1. Turn the main frame (2) upside down.
2. Fit the long chain (3) around the front cog and the rear derailleur's pulleys, arranging it in an S shape.



3. Loosen the nuts on both sides of the main frame's tail.
4. Align the slots and bolts on the main frame with the bolts and slots on the rear frame, sliding the main frame onto the rear frame as shown. For best results, start with either side and repeat for the other side.
5. Tighten all the nuts connecting the two frames completely with the 18 mm wrench (27).

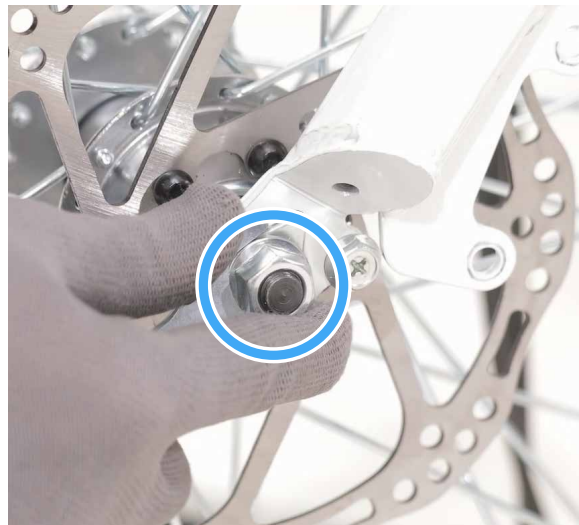


6. Find the chain clip in the short chain bag.
7. Place the short chain (9) around the two rear freewheels.
8. Join both ends of the chain, jamming the pin into the slot and pushing the clip into place. Use pliers (not included) if needed.
9. Check that the chains move freely by rotating the adjacent crank arm.

3. Installing the Front Wheel and Brake Disc

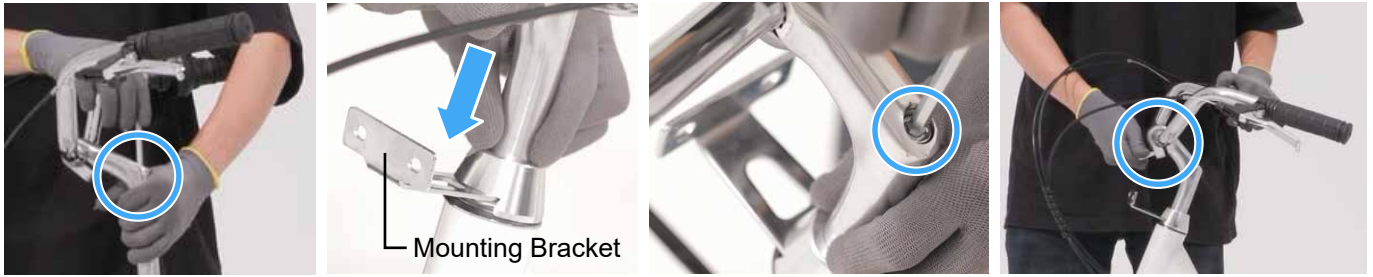


1. Fit the front brake disc (11) onto the left side of the hub on the front wheel (7), aligning their holes.
2. Select the appropriate hex bolts from the fastener packet (10), which should match the holes on the front brake disc and around the front wheel hub.
3. Secure the front brake disc in place by attaching the selected hex bolts and tightening them with the 4 mm hex wrench (25).



4. Loosen the bolts on the protective bar between the front fork and then remove the bar from the fork.
5. Loosen the nuts and retaining clips on the front wheel hub by hand.
6. Place the front wheel into the front fork, allowing the fork to catch its axle snugly between the clips and its hub.
7. Mount the retaining clips into place using their tabs.
8. Retighten the nut on each side with the 22 mm wrench to lock the front wheel in place.

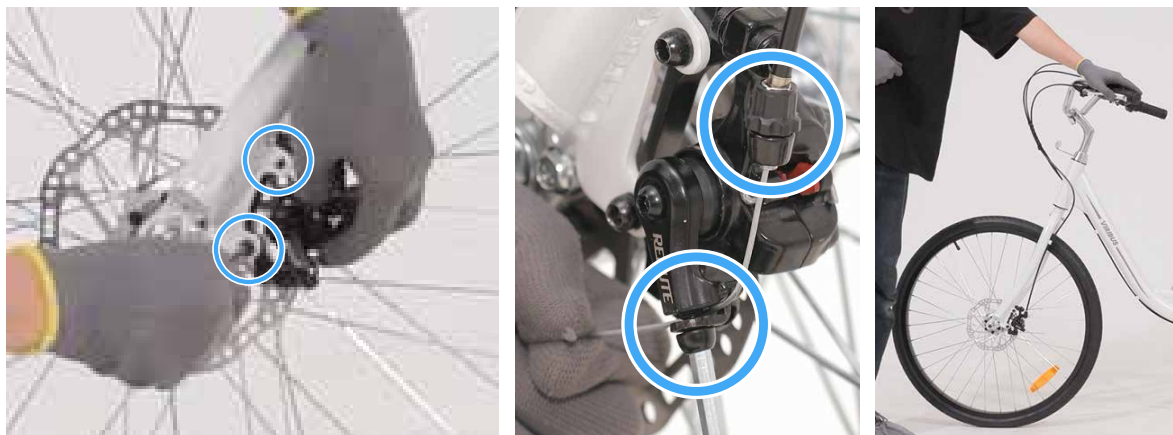
4. Installing the Handlebars



1. Carefully turn the tricycle frame right side up.
2. Mount the headset spacer (21) onto the top of the head tube.
3. Remove the protective cover underneath the steering tube of the handlebars (1).
4. Loosen the bolt at the top of handlebars' steering tube. Slide the steering tube into the head tube until your desired height is reached and secure it in place by retightening its top bolt with the 6 mm hex wrench (23).
5. Adjust the position of the handlebars' stem as needed and secure it in place by tightening its front bolt with the 6 mm hex wrench.

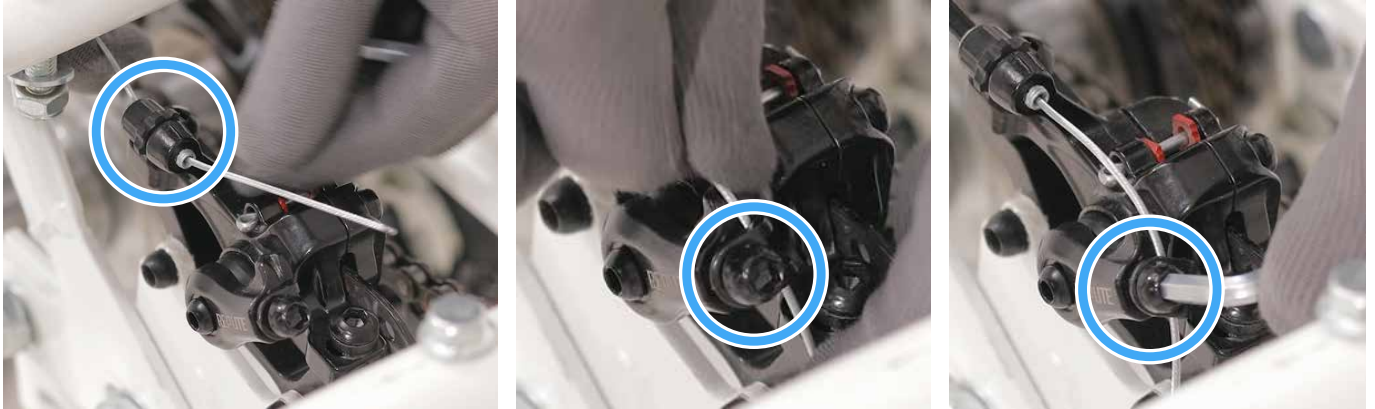
Note: The mounting bracket in front of the handlebars' steering tube is prepared for you to install your front basket (not included) as needed.

5. Installing the Front Brake Caliper



1. Remove the hex bolts from the front brake caliper (19) with the 5 mm hex wrench (24). Place them nearby.
2. Fit the front caliper onto the front fork and secure it in place by replacing and tightening the removed bolts.
3. Pass the front brake cable from the left brake lever through the slots on the front brake caliper as shown.
4. Tighten the bolt at the bottom of the front brake caliper using the 5 mm hex wrench.
5. Press the left brake lever, testing that the front brake caliper works smoothly.

6. Installing the Rear Brake



1. Feed the rear brake cable from the right brake lever through the slots on the rear brake caliper as shown.
2. Pull the cable taut, tightening the locking bolt with the 5 mm hex wrench.
3. Test the rear brake by pressing the right brake lever.

7. Installing the Rear Reflectors



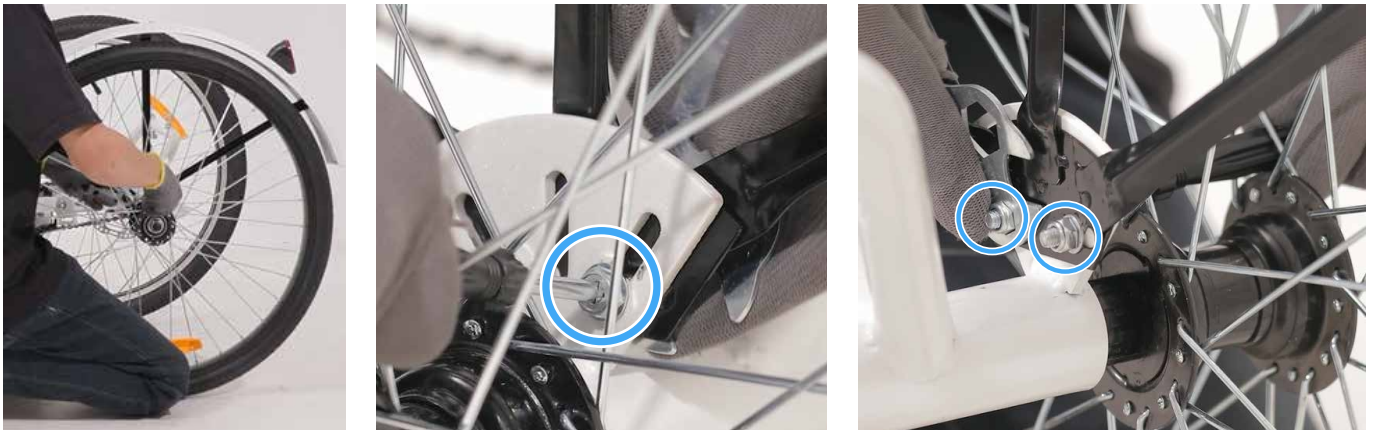
Note: The two rear reflectors (30) are the same and can be used on either rear fender (14).

1. Select the appropriate nuts from the fastener packet, which should match the preinstalled bolt of each rear reflector.
2. Attach either rear reflector to one rear fender using its bolt.
3. Secure the rear reflector in place using either of the selected nuts. For best results, use your pliers to tighten the nut completely.
4. Install the other rear reflector following the same steps.

8. Installing the Rear Fenders and Stays



1. Select the appropriate bolts and nuts from the fastener packet, which should match the holes on the rear fenders and the heads of their stays (16).
2. Connect either rear fender to one rear fender stay, aligning their holes as shown.
3. Attach the selected bolts and nuts, tightening them with the Phillips screwdriver (29).
4. Connect the other rear fender to its stay in the same fashion.



5. Select the appropriate bolts and nuts from the fastener packet, which should match the holes on the side brackets of the rear frame and the bottoms of the rear fender stays.
6. Place the appropriate rear fender over the left rear wheel, with its reflector facing backwards.
7. Align the rear fender stay with the rear frame's left side bracket, taking care not to allow the stay to touch the tire or wheel rim.
8. Attach the selected bolts and nuts, tightening them with the Phillips screwdriver and multifunctional wrench (20).
9. Install the other rear fender over the right rear wheel following the same steps.

9. Installing the Front Fender and Stay



1. Remove the nut and long bolt from the top of the front fork by hand. Place them nearby.
2. Fit the front fender (14) over the front wheel, aligning its top slot with the hole on the top of the front fork.
3. Secure the front fender by replacing the long bolt and nut. Tighten them with the Phillips screwdriver and multifunctional wrench.



4. Select the appropriate Phillips bolts from the fastener packet, which should match the slots on the front fender stay (12) and the holes beside the front fork's tips. Also find the double-hole connecting plate in the packet.
5. Fit the front fender stay into place on the front fender, aligning its slots with the holes beside the front fork's tips.
6. Attach and tighten two of the selected Phillips bolts to secure the front fender stay to the front fork.
7. Use the connecting plate and the rest of the selected bolts to fasten the front fender to its stay as shown.

10. Installing the Chain Guard



1. Remove the 2 Phillips bolts from the guard supports near the crankset and rear freewheels. Place them nearby.
2. Fit the chain guard (15) onto its supports and over the front long chain as shown.
3. Replace and tighten the removed bolts.
4. Rotate the right crank arm to confirm the chain does not rub against the guard. If it does, readjust the guard so that the chain can move freely.

11. Installing the Rear Basket



1. Unfold the basket frame (32) and align the slots on the edge of each side.
2. Find the small tabs in the fastener packet. Connect the basket sides using the tabs and the long pins (31) as shown.



3. Remove the 4 sets of nuts, bolts, and washers from the rear frame by hand. Place them nearby.
4. Fit the basket onto the rear frame, placing the slats (17) into the basket where their bolt holes are aligned with those on the rear frame.
5. Replace the washers, bolts and nuts, tightening the bolts and nuts with the multifunctional wrench and an adjustable wrench (not included).

12. Installing the Pedals



Note: The two pedals (8) **ARE** different and should **NOT** be mixed up. The right pedal is marked with an **R** and the left with an **L**.

1. Attach the pedals to the crank arms on the appropriate side, screwing them into place.
2. Tighten their locking nuts with the multifunctional wrench.
3. Test that the chain turns smoothly while using the pedals, adjusting as needed.

13. Installing the Saddle



1. Feed the saddle post (6) into the central hole underneath the saddle (5).
2. Tighten the locking nuts on both sides using the multifunctional wrench until the saddle is securely fixed to its post.



3. Being sure the saddle clamp on the top of the seat tube is open, insert the saddle post into the seat tube until your preferred height is reached.
4. Close saddle clamp using its locking lever as shown.



5. To adjust the saddle forward or backward, loosen the two nuts underneath the saddle using the multifunctional wrench, slide the saddle on its support frame until your desired position is reached, and retighten the nuts. Confirm they hold tight and the saddle does not show any wobble.

14. Installing the Wheel Caps



1. Attach the rear wheel caps (26) to the rear wheel hubs, pressing until they are locked in place.
2. Install the front wheel caps (22) onto both sides of the front wheel hub in the same fashion.

15. Arranging the Cables



1. Bind the brake and derailleur cables using the provided cable tie (28) in front of the handlebars.
2. Check that all cables are arranged neatly and do not interfere with any moving parts of this tricycle.

Speed Gearing Adjustment

The Shimano gear shifter on the right handlebar uses a twist grip to control the 7 rear cogs, providing 7-speed gearing for manual riding.

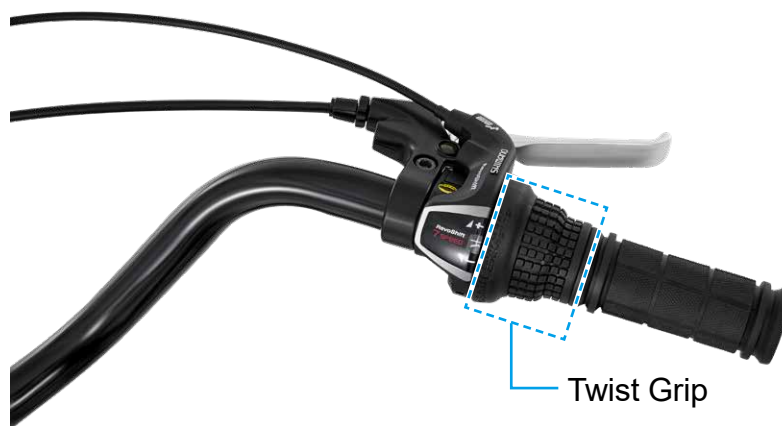
Larger gear numbers represent smaller rear cogs and higher speeds.

Smaller gear numbers refer to larger rear cogs and lower speeds.

To upshift, turn the twist grip forwards (toward +).

To downshift, turn the twist grip backwards (toward -).

Be sure that your tricycle's crank is turning while using the shifter to adjust the long chain on the cogs.



Maintenance

Warning

Failure to maintain this tricycle may result in malfunction of a critical part and serious injury or death. Proper maintenance is critical to the performance and safe operation of the tricycle.

The exact intervals for lubrication and maintenance may vary depending on the conditions the tricycle is exposed to. Always inspect the tricycle and conduct necessary maintenance before each use of the tricycle.

This section presents important information on maintenance and will assist you in determining the proper course of action to take if you have a problem with the operation of the tricycle. If you have questions regarding maintenance, please contact us.

Correct routine maintenance of your new tricycle will ensure:

- Smooth running
- Longer lasting components
- Safer riding
- Lower running costs

Basic Maintenance

The following procedures will help you maintain your tricycle for years of enjoyable riding.

- Clean the exterior of the tricycle with a soft dry or damp cloth.

For painted frames, dust the surface and remove any loose dirt with a dry cloth. To clean, wipe with a damp cloth soaked in a mild detergent mixture. Dry with a cloth and polish with car or furniture wax.

Use soap and water to clean plastic parts and rubber tires.

Caution

DO NOT use harsh abrasives or caustic chemicals.

- Store your tricycle sheltered. Avoid leaving it in the rain or exposed to corrosive materials.
- Riding on the beach or in coastal areas exposes your tricycle to salty, airborne moisture, which is very corrosive. Wash your tricycle frequently and wipe or spray all unpainted parts with an anti-rust treatment. Make sure the wheel rims are dry so braking performance is not affected. After the rain, dry your tricycle and apply anti-rust treatment. If the hub and bottom bracket bearings of your tricycle have been submerged in water, they should be taken out and re-greased. This will prevent accelerated bearing deterioration.
- If the paint has become scratched or chipped to the metal, use touch-up paint to prevent rust. Clear nail polish can also be used as a preventative measure.
- Check the parts of the tricycle for any looseness, stiffness, wear, or damage after each use. Tighten, lubricate, repair, or replace any problematic parts before further use.

Warning

ONLY use identical replacements.

Lubrication Schedule

Schedule	Parts	Lubricant	Method
Weekly	Chains	Chain lube or light oil	Brush on or squirt
	Brake levers	Oil	Two drops from oil can
	Freewheels	Oil	Two drops from oil can
	Brake cables	Lithium based grease	Remove cables from the casing. Grease the entire length. Wipe off excess lubrication from other surfaces.
	Derailleur cable	Thin layer of grease	Clean and grease the cable.
Yearly	Bottom bracket	Lithium grease	Disassemble
	Pedals	Lithium grease	Disassemble
	Wheel bearings	Lithium grease	Disassemble
	Headset	Lithium grease	Disassemble
	Seat post	Lithium grease	Disassemble
	Pedals: that can be disassembled		Contact a tricycle mechanic for maintenance.

Parts Maintenance

Parts	Inspect	Action	Maintenance
Tires <i>(Frequency: Inspect and maintain at least each use.)</i>	Tire inflation	Check tire pressure.	Inflate the tires to the pressure indicated on the tire sidewall. See Inflating the Tire Tube (Page 21) for more details. If the tire is flat, see Repairing A Flat Tire (Page 21) for more details.
		Check the bead is properly seated while inflating or refitting the tire.	Reduce air pressure in the tube and re-seat the bead.
		Spin wheel and check rotation/alignment is smooth and even.	Loosen axle nut(s) and adjust until properly seated. If the hub bearings need repair, contact a tricycle mechanic for repair.
	Bead seating	Check for broken or loose spokes.	Contact a tricycle mechanic for repair.
	Tread	Inspect for signs of excessive wear, flat spots or cuts and damage.	Replace the tire(s).
	Valves	Check that valve caps are fitted and free of dirt.	Clean dirt from the valve.
Wheels <i>(Frequency: Inspect and maintain at least each use.)</i>	Rims	Inspect for dirt and grease.	Use a clean rag or wash with soapy water, rinse, and air dry.
	Wheels	Check the wheels are securely fastened to the tricycle and axle nuts are tight.	Adjust if necessary and tighten axle nuts.
		Spin the wheel and check rotation/alignment is true.	Contact a tricycle mechanic for repair.
	Spokes	Check for broken or loose spokes.	Contact a tricycle mechanic for repair.
Hub bearings	Lift each wheel and see if there is movement from side to side.	Contact a tricycle mechanic for repair.	

Parts	Inspect	Action	Maintenance
Drivetrain (pedals, chains, chain wheel, crank set, freewheel) <i>(Frequency: as noted)</i>	Pedals	Every month, check each pedal is securely set and tightened into the crank arm.	If necessary, re-set and tighten.
		Before each ride, check each front and rear pedal reflectors are clean and in place.	Clean or replace.
	Pedal bearings	Every ride, check the pedal bearings are properly adjusted. Move the pedal up and down, left and right. If looseness or roughness is detected, adjustment, lubrication or replacement is required.	Contact a tricycle mechanic for repair.
	Chains	Every week, check the chain is clean, properly lubricated, rust-free, and is not stretched, broken, or has stiff links.	Lubricate if necessary. Replace if rusted, stretched, or broken.
	Crank set	Every month, check the crank set (crank arms, chain rings, and bottom bracket axle and bearings) is correctly adjusted and tight.	Contact a tricycle mechanic for repair.
Brakes <i>(Frequency: Inspect and maintain before each use.)</i>	Levers	Check the levers are securely fastened to the handlebar.	Position the levers to fit the rider's grip and screw tight to the handlebar.
	Cables	Check the outer casing for kinks, stretched coils and damage. Check cables for kinks, rust, broken strands or frayed ends.	Replace the cables.
		Check the housing is seated properly into each cable stop of the tricycle .	It is recommended that the cables and housing be replaced every riding season.

Hub Bearings

Servicing hub bearings requires special thin wrenches called cone wrenches. If you do not own these tools, do not attempt hub-bearing adjustments. Have a qualified tricycle mechanic perform the adjustment if you have any doubts.

1. Check to make sure neither locknut is loose.
2. To adjust, remove wheel from the tricycle and loosen the locknut on one side of the hub while holding the bearing cone on the same side with a cone wrench.
3. Rotate the adjusting cone as needed to eliminate free play.
4. Re-tighten the locknut while holding the adjusting cone in position.
5. Re-check that the wheel can turn freely without excessive side play.

Inflating the Tire Tube

Warning

- *An improperly seated innertube can rupture unexpectedly and may cause serious injury or death under some circumstances. Be sure the innertube is properly seated before inflating.*
- *Overinflation or inflating the tube too quickly may result in the tire blowing off the rim and damaging the tricycle or causing injury to the rider. Always use a hand pump to inflate the tube. Do not use a gas station service pump to inflate the tube.*

Follow these steps to inflate a tire:

1. Remove the valve cap and connect the valve.
2. Be sure the tire is evenly seated on the rim on both sides.
3. Spin the wheel and check for high and low areas.
4. Inflate to the recommended psi marked on the sidewall of the tire.
5. Be sure the tire is evenly seated on the rim on both sides. If not, release some air and repeat steps 3–6.
6. Check for dirt in the valve cap or stem. Clean dirt from the cap or stem.
7. Securely replace the valve cap on the stem.

Repairing A Flat Tire

Warning

An unseated tire can rupture unexpectedly and may cause serious injury or death under some circumstances. Be sure the tire is properly seated when inflating the innertube.

Materials Needed

Here's a list of some things you will need to repair your tube:

- **Bike Pump** (or CO₂ inflator head and cartridge): Whether it's a handheld bike pump or a standing pump, you need to re-inflate the new tire or your patched tire.
- **Spare Tube or Patch Kit**: It is advisable to carry a spare tube for quick replacement. A patch kit is also essential for making repairs at home or during a ride.
- **Tire Levers**: A tire lever is going to be a critical tool to help you get your tire off the rim.
- **Chalk** (optional): Chalk can help to mark the location of small punctures on the tire to keep track of the repair area.
- **Talcum Powder** (at home): At home, you can apply talcum powder to the tube to prevent the adhesive patch from sticking to the tire when reassembling the wheel.
- **Bucket of Water** (at home): A bucket of water can be used to detect leaks by submerging the inflated tube and watching for bubbles.

Procedure

Follow these 4 steps to patch your punctured innertube and tire.

Step 1. Remove Your Tire

1. Take your tire lever and hook it around the outer edge of the tire (the bead) to get it off of the rim.
2. Once you have the tire lever under the tire rubber, hook the other end of your tire lever around one of your spokes to keep the tire elevated.
3. With a second tire lever, work your way around the rim, taking the tire out of the bead until one side has been completely removed from the rim.



Step 2. Find the Leak

1. Find the leak.
2. If the puncture or gash in your tube is not easily apparent, fill the tube back up to locate where the air is escaping from.

There are a couple of different ways to find the leak:

- The layman's way would just be to run your hand along the tube and try to feel it out.
- If you're at home, do as follows.
 - a. Fill your sink or a large bucket full of water.
 - b. Submerge each end of the tube.
 - c. Watch for air bubbles escaping from your tire to locate the problem area.

Make sure you submerge each side, as there may be more than one puncture. Be sure to check the inside of the tire to make sure that the puncture-causing object has been removed.

3. Once located, mark the puncture with the chalk.



Step 3. Patch the Holes

When patching the hole, make sure that the area around the puncture is clean and has been scuffed so that the patch will stick.

1. Using the scuffer (sand paper or emery paper) from your patch kit, rough up the area around the puncture so that your adhesives have something to grip.
2. Patch the hole.
 - For patches that don't require glue, simply press them firmly over the hole.
 - For patches that do need glue,
 - a. Add a layer of glue and spread it evenly around the area.
 - b. Wait for the glue to get a little tacky, and then press on your patch.

If the sprinkle talcum powder is available, you can sprinkle talcum powder on top of the patch so that the patch/adhesive doesn't stick to the inside of the tire.



Step 4. Put It All Back Together

1. Make sure, again, that there are no foreign objects remaining in the tire.
2. Inflate the tube 1/4 full.
3. Put it back in the tire.

Be sure to insert the tube and tire back into the rim using only your hands, as the tire levers may pinch the tube and cause another flat.

4. Re-inflate the tire and inspect.
 - a. Ensure the tire is properly seated and the valve stem is securely positioned inside the tire.
 - b. Inflate the tube to the recommended pressure indicated on the tire sidewall.
 - c. After inflation, check the tire once more to confirm that the bead is correctly installed and snugly fitted against the rim.



Troubleshooting

Problems	Causes	Solutions
Gear shifter not working properly	<ul style="list-style-type: none"> • Rear derailleur cable sticking/stretched/damaged • Rear derailleur not adjusted properly • The tricycle's crank not turning while using the gear shifter 	<ul style="list-style-type: none"> • Lubricate/tighten/replace the cable. • Adjust the derailleur. • Be sure that the crank is turning while trying to use the gear shifter.
Slipping chain	<ul style="list-style-type: none"> • Excessively worn/chipped chain wheel or freewheel sprocket teeth • Chain worn/stretched • Stiff link in the chain • Non-compatible chain/chain wheel/freewheel 	<ul style="list-style-type: none"> • Replace the chain wheel, sprockets, and chain. • Replace the chain. • Lubricate or replace the link. • Seek advice at a tricycle shop.
Chain jumping off freewheel sprocket or chain wheel	<ul style="list-style-type: none"> • Chain wheel out of true • Chain wheel loose • Chain wheel teeth bent or broken • Cross chaining and shifting under load 	<ul style="list-style-type: none"> • Re-true if possible, or replace. • Tighten the mounting bolts. • Repair or replace the chain wheel/set.
Constant clicking noises when pedaling	<ul style="list-style-type: none"> • Stiff chain link • Loose pedal axle/bearing • Loose bottom bracket axle/bearings • Bent bottom bracket or pedal axle • Loose crankset 	<ul style="list-style-type: none"> • Lubricate the chain/adjust the chain link. • Adjust the bearings/axle nut. • Adjust the bottom bracket. • Replace the bottom bracket axle or pedals. • Tighten the crank bolts.
Grinding noise when pedaling	<ul style="list-style-type: none"> • Pedal bearings are too tight. • The bottom bracket bearings are too tight. 	<ul style="list-style-type: none"> • Adjust the bearings. • Adjust the bearings.
Freewheel not rotating	<ul style="list-style-type: none"> • Freewheel internal pawl pins are jammed. 	<ul style="list-style-type: none"> • Lubricate. If the problem persists, replace the freewheel.
Brakes not working effectively	<ul style="list-style-type: none"> • Brake pads worn down • Brake pads greasy, wet, or dirty • Brake cables are binding/stretched/damaged • Brake levers are binding • Brakes out of adjustment 	<ul style="list-style-type: none"> • Replace the brake pads. • Clean the pads. • Clean/adjust/replace the cables. • Adjust the brake levers. • Center the brakes.
When applying the brakes, they squeal/squeak	<ul style="list-style-type: none"> • Brake pads worn down • Brake pads toe-in incorrect • Brake pads/rim dirty or wet • Brake arms loose 	<ul style="list-style-type: none"> • Replace the pads. • Correct pads toe-in. • Clean the pads and rim. • Tighten the mounting bolts.
Knocking or shuddering when applying brakes	<ul style="list-style-type: none"> • Bulge in the rim or rim out of true • Brake mounting bolts loose • Brakes out of adjustment • Fork loose in the head tube 	<ul style="list-style-type: none"> • True wheel or take to a tricycle shop for repair. • Tighten the bolts. • Center the brakes and/or adjust the brake pads toe-in. • Tighten the headset.

Contact Us

Thank you for choosing our products! If you have any questions or comments, contact us at contact@b2ccsonline.com and we'll resolve your issue ASAP!

For a .pdf copy of the latest version of these instructions, use the appropriate app on your smartphone to scan the QR code to the right.



A B R - R 1 A B - A B
A B R - R 1 A B - A G
A B R - R 1 A B - A R
A B R - R 1 A B - A W
A B R - R 2 A B - A B
A B R - R 2 A B - A G
A B R - R 2 A B - A R
A B R - R 2 A B - A W
Rev. 6 May. 2024