

Adult Tricycle User Manual



Read Carefully Before Assembly
Keep for Future Reference

Disclaimer

Read this disclaimer completely and carefully before proceeding with the rest of the manual content.

1. As-Is

This Viribus product is sold 'as is' and without any express or implied warranties, including but not limited to the implied warranties of merchantability and fitness for a particular purpose.

2. Product Modifications

Any modifications or alterations to Viribus products void any warranties and may result in damage or injury. Viribus shall not be liable for any damages resulting from such modifications or alterations.

3. Compliance with Laws

Customers shall be liable for ensuring that the use of Viribus products complies with all applicable laws and regulations in their respective jurisdictions. Viribus assumes no responsibility for any violations of laws or regulations resulting from the use of Viribus products.

4. Correct Use

Always use Viribus products only as directed in the accompanying manuals. Failure to follow instructions may result in injury or damage.

Always ensure the assembly, installation, operation, maintenance, or repair of Viribus products is carried out by a competent person.

Always make maintenance regularly throughout Viribus products' lifecycles; you have the liability to keep the products operating as intended.

Always wear appropriate protective gear.

5. Third-Party Products

Viribus shall not be liable for any damages or losses resulting from the use of third-party products in conjunction with Viribus products. Customers shall refer to the third-party's guidelines or/and warranties (if any) for any third-party products used.

6. Limitation of Liability

Viribus shall not be liable for any direct, indirect, punitive, incidental, special, or consequential damages to property or life, whatsoever arising out of or connected with the use or misuse of Viribus products. In no event shall Viribus's liability exceed the value of the products sold.

This disclaimer states the entire obligation of Viribus with respect to Viribus products. If any part of this disclaimer is determined to be void, invalid, unenforceable, or illegal, including but not limited to the warranty disclaimers, liability disclaimers, and liability limitations set forth above, the invalid or unenforceable provision will be deemed superseded by a valid and enforceable provision that most closely matches the intent of the original provision and the remainder of the agreement shall remain in full force and effect.

Contents

Safety Information	1
General Notice.....	1
Traffic Rules.....	1
Clothing	1
Safety Checks	2
Sensible Use	2
Package List	3
Parts Diagram	4
Assembly	5
Installing the Rear Wheels.....	5
Installing the Handlebars	7
Connecting the Rear and Main Frames.....	9
Installing the Chain	9
Installing the Front Wheel.....	11
Installing the Front Fender and Stay	13
Installing the Chain Guard	15
Feeding the Rear Brake Cable	16
Installing the Rear Reflectors	18
Installing the Rear Fenders	18
Installing the Rear Fender Stays	19
Assembling the Rear Basket	20
Installing the Rear Basket.....	21
Installing the Pedals	22
Installing the Saddle	23
Installing the Bell	24
Installing the Front Reflector.....	24
Post-Assembly Checks.....	25
Speed Gearing Adjustment	25
Maintenance	26

Safety Information

Warning

General Notice

- Read **ALL** these instructions completely prior to assembly and use. Contact customer service if any point is unclear.
- Provide this manual to anyone who will use this tricycle and provide it with this tricycle (whether already assembled or not) if it is ever given or sold to a third party.
- **ONLY** assemble and adjust this tricycle in accordance with these instructions. Failure to do so may lead to serious property damage and severe personal injury.

Traffic Rules

- **ALWAYS** obey **ALL** applicable local and national laws and regulations while riding.
- **DO NOT** allow use by children, by persons unfamiliar with this tricycle or these instructions, or by anyone whose physical or mental impairment precludes safe use.
- **DO NOT** ride this tricycle while tired or under the influence of drugs or medication.
- **DO NOT** ride this tricycle in **ANY** area prohibited to manual tricycles.
- **ALWAYS** maintain your reflectors and other required safety equipment.
- It is advisable to equip your tricycle with a warning device such as a horn, bell, and light in case you are riding at times of poor visibility. This is **EVEN** required in some jurisdictions.

Clothing

- **ALWAYS** wear appropriate hand protection during assembly, disassembly, adjustment, or repair of this tricycle.
- **DO NOT** wear loose footwear or clothing that may become caught in the wheels or any other moving parts while riding.
- **DO NOT** ride this tricycle with bare feet.

ALWAYS wear closed-toe shoes with good traction to maintain grip on the pedals and provide protection for your feet.

- Gloves with grip padding are strongly recommended for riding, as they can strengthen your hold on the handlebars and protect your hands in case of a fall.
- If necessary, wear sunglasses or other clear protective eyewear to shield your eyes from dust, debris, and insects.
- If necessary, wear a helmet and other protective gear that meet safety standards while riding.
- In sunny conditions, it is advisable to wear a hat or a cycling cap to shield your head and face from the sun. Also apply sunscreen to exposed skin, especially for long rides.
- For best results, choose brightly colored or reflective clothing or attach reflective accessories or strips to your clothing to enhance visibility from all angles, especially during low-light conditions.

Safety Information

Safety Checks

- **ALWAYS** check that **BOTH** the front and rear brakes are positioned properly **BEFORE** riding.
- **ALWAYS** check that **ALL** components and fasteners are intact and securely tightened **BEFORE** and **AFTER** riding.
- Regularly check the reflectors to make sure that they are clean, straight, unbroken, and securely mounted. Also perform this check for lights if any have already been installed.

Riding with low light or without lights or reflectors is **EXTREMELY** dangerous.

- **DO NOT** ride this tricycle if any part is damaged or shows any sign of malfunction. Repair or replace worn and broken components before further use, especially bent or broken spokes and wheel rims.
- **NEVER** replace any components or fasteners with nonidentical ones.

Sensible Use

- **ONLY** allow one person to use this tricycle at a time.
- **DO NOT** carry children in the rear basket while riding.

If carrying pets, ensure that this act is permitted in your jurisdiction and they are safely secured with comfort.

- For optimal safety, it is **NOT** recommended to ride your tricycle at night or in environments with poor visibility (e.g., foggy or snowy conditions).

If you have an emergency that makes it necessary to do so, be sure to have proper lights and reflectors and ride at low speed.

- **DO NOT** ride this tricycle in extreme weather conditions, such as thunderstorms and hurricanes. If you meet with them during a ride, stop your tricycle, find a safe shelter, and wait until they pass.
- When meeting a strong wind, keep a firm grip on the handlebars, lean into the wind, and adjust your position as needed to maintain control.
- In wet weather, be careful to avoid sharp turns, which are easy to cause an accidental fall.
- **ALWAYS** be mindful of your speed. Ensure you have sufficient room to brake in an emergency.
- **ALWAYS** allow more distance for braking when riding through leaves, loose gravel, or other debris, as these can affect the stopping power of your brakes.
- **ALWAYS** be alert for people, animals, or any obstacles that may appear in front of you while riding your tricycle.

Also be careful of passing parked cars, whose doors might open suddenly.

It is advisable to install warning devices to draw their attention, **BUT** always be ready to turn safely out of their way if needed.

- **ALWAYS** be careful at road and rail crossings. Slow down and check both ways for oncoming traffic.

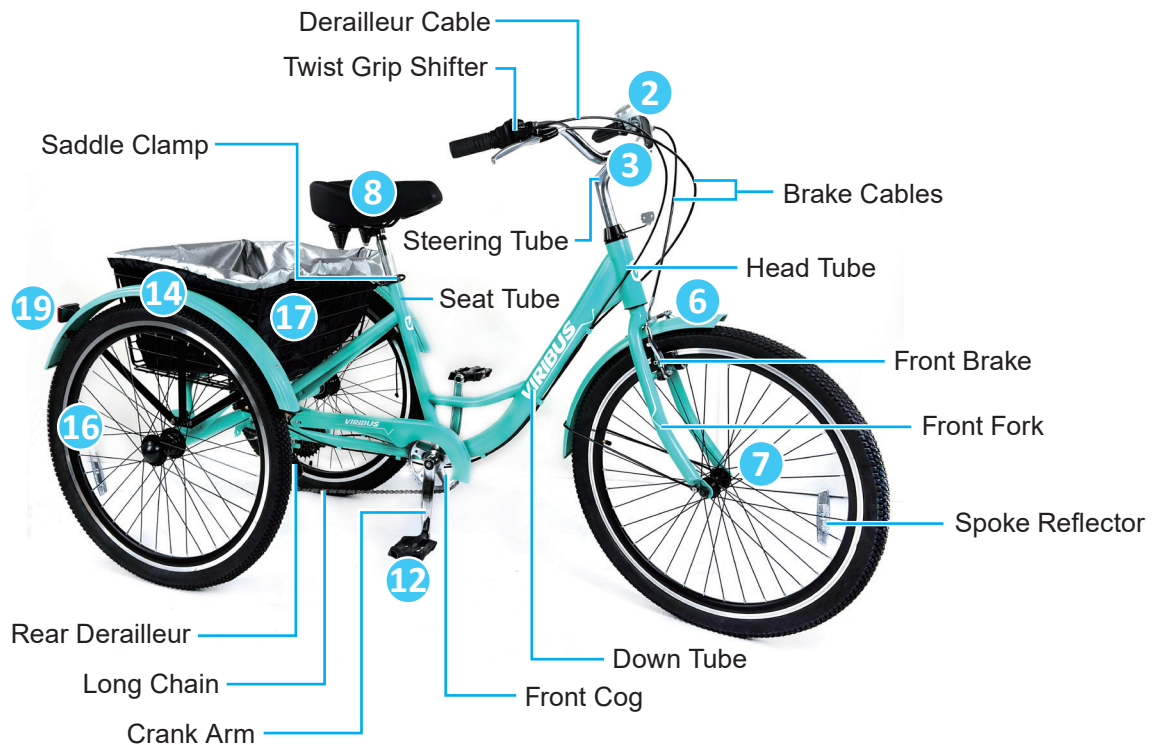
Safety Information

- **DO NOT** ride this tricycle in close proximity to precipices or on highly uneven, sandy, or sloped surfaces.
- **DO NOT** push backward on the pedals when using the gear shifter. Otherwise, the chain may get stuck, causing serious damage to this tricycle.
- **DO NOT** carry packages or objects on your tricycle in a way that obstructs your view of the road.
- **DO NOT** use harsh abrasives or caustic chemicals to maintain this tricycle.
- **DO NOT** load this tricycle with more than 395 pounds (180 kg), including 154 pounds (70 kg) in the rear basket.
- **ALWAYS** maintain 40–65 psi (2.8–4.5 bar) when inflating the wheel tires.

Package List



Product Diagram



No.	Name	Qty.
1	Handlebars	1
2	Bell	1
3	Front Reflector	1
4	Headset Spacer	1
5	Main Frame	1
6	Front Fender with Stay	1
7	Front Wheel	1
8	Saddle	1
9	Saddle Post	1
10	Short Chain	1
11	Chain Guard	1
12	Pedals	2
13	Rear Frame	1
14	Rear Fenders	2
15	Rear Fender Stays	2
16	Rear Wheels	2
17	Rear Basket	1
18	Slats	2
19	Rear Reflectors	2
20	Rear Wheel Caps	2
21	Flathead/Phillips Screwdriver	1
22	5 mm Hex Wrench	1
23	6 mm Hex Wrench	1
24	8 mm/10 mm Wrench	1
25	13 mm/15 mm Wrench	1
26	14 mm/17 mm Wrench	1

No.	Name	Qty.
27	22 mm Wrench	1
28	M5*10 mm Bolts with Nuts	6
29	M6*20 mm Bolts with Nuts	4
30	M6*40 mm Bolts with Nuts	5
31	Rear Brake Spring	1
32	Chain Joint Parts	3
33	Basket Liner	1
34	M5*60 mm Bolts with Nuts	4

Not Included but Helpful:

- Pliers
- Work Gloves
- Goggles

Note:

When you first get your new tricycle, carefully unpack all of the above-mentioned components and accessories. Check that nothing is missing or has been damaged in transit.

Keep children away from the packaging or provide constant supervision.

Storing your original packaging through the warranty period will speed returns if any are needed.

Assembly

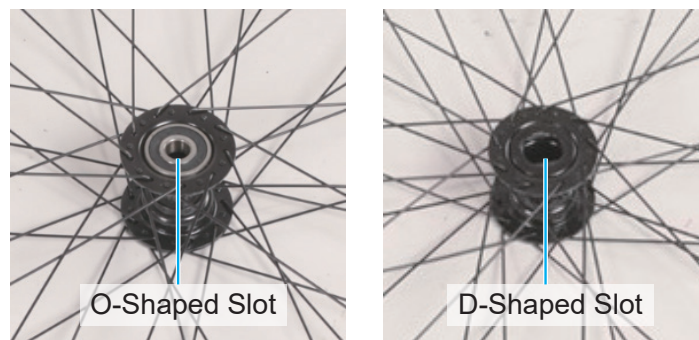
Warning

ALWAYS wear work gloves and goggles during assembly to prevent accidents.

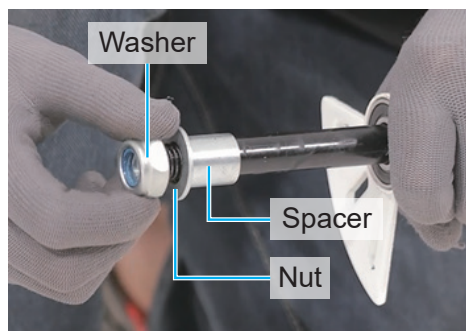
For your convenience, all bolts, nuts, and washers are preinstalled where they will be needed. During assembly, remove the fasteners as needed and keep them nearby. Reinstall them to connect each part as you go and tighten them securely for a safe and satisfactory experience.

Installing the Rear Wheels

Note: The two rear wheels (16) **ARE** different and should **NOT** be mixed up. The wheel with the O-shaped slot goes with the O-shaped hub on the left side of the rear axle while the wheel with the D-shaped slot goes with the D-shaped hub on the right side.



1. Remove the nut and washer from the O-shaped hub on the left side of the rear frame (13) by hand. Place them nearby.

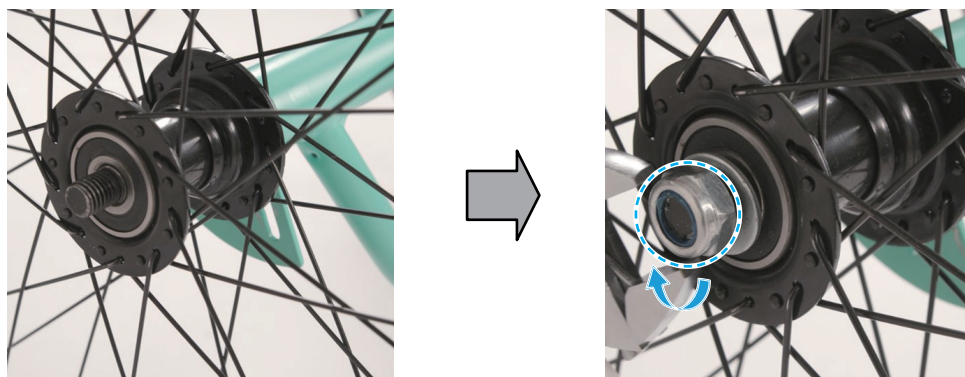


2. Slide the spacer inwards.

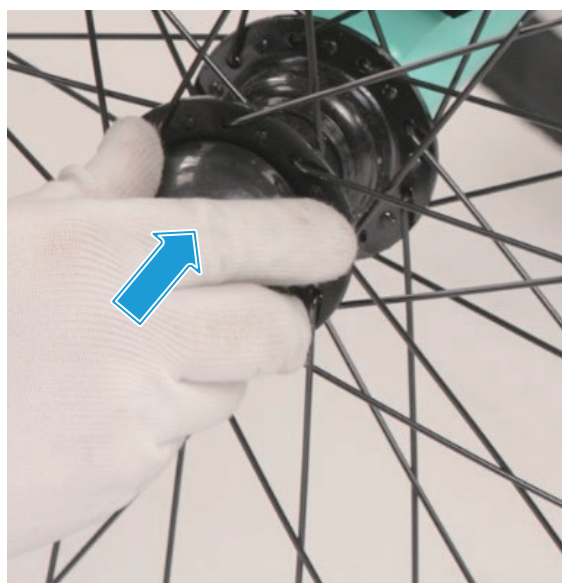


Assembly

3. Connect the wheel with the O-shaped slot to the O-shaped hub.
4. Replace the washer and nut, tightening the nut with the 22 mm wrench (27).



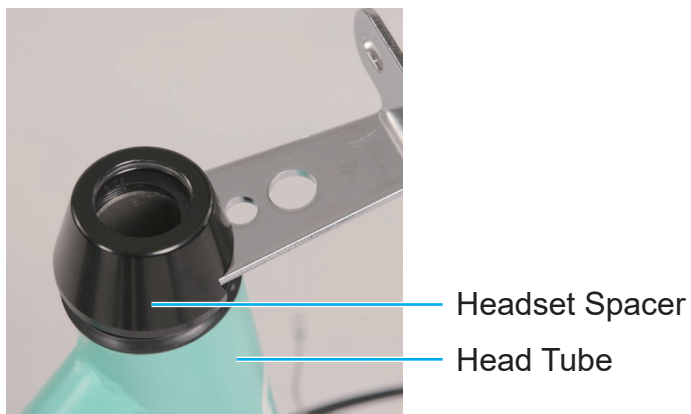
5. Remove the nut and washer from the D-shaped hub on the right side. Place them nearby.
6. Connect the wheel with the D-shaped slot to the D-shaped hub.
7. Replace the washer and nut, tightening the nut in the same fashion.
8. Attach the rear wheel caps (20) to the rear wheel hubs, pressing until they are locked in place.



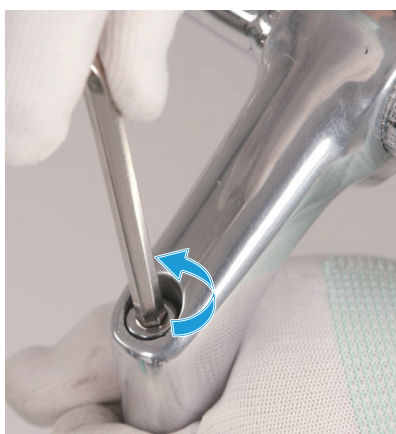
Assembly

Installing the Handlebars

1. Mount the headset spacer (4) onto the top of the head tube.



2. Remove the protective cover underneath the steering tube of the handlebars (1).
3. Loosen the bolt at the top of the steering tube using the 6 mm hex wrench (23).



4. Slide the steering tube into the head tube until your desired height is reached. The inserted part of the steering tube should at least exceed the safety line.

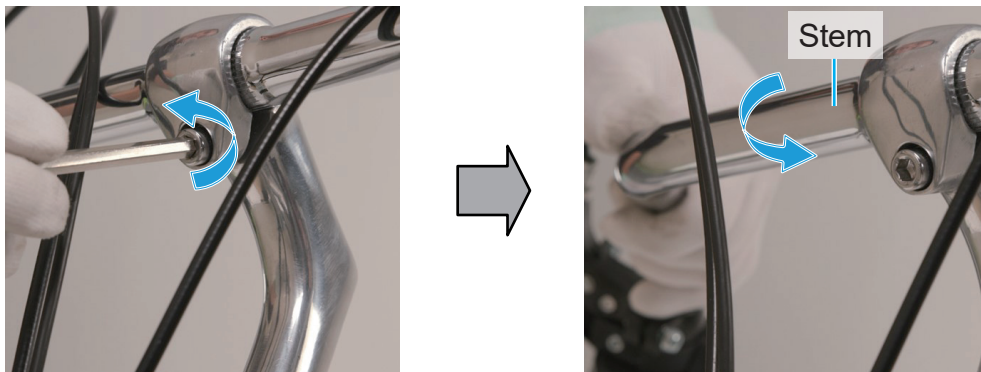


Assembly

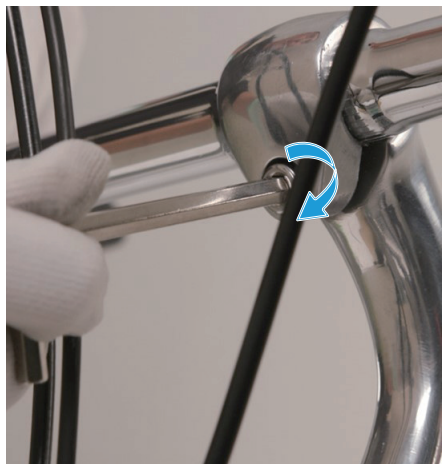
5. Retighten the top bolt with the 6 mm hex wrench to secure the steering tube into place, being sure the bend part of the steering tube is aligned with the head tube.



6. Loosen the front bolt with the 6 mm hex wrench and adjust the position of the handlebars' stem as needed.



7. Retighten the front bolt with the 6 mm hex wrench to secure the stem.

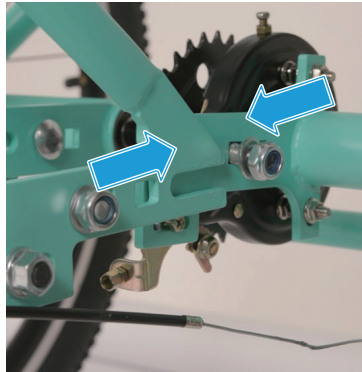


Assembly

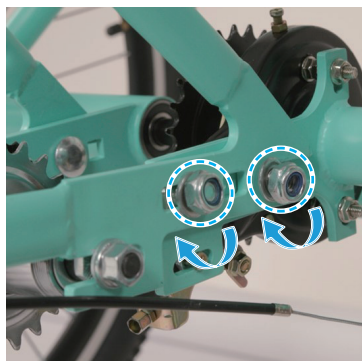
Connecting the Rear and Main Frames

1. Turn the rear frame and main frame (5) upside down.
2. Loosen the nuts and bolts on both sides of the main frame's tail and rear frame's head.
3. Align the slots and bolts on the main frame with the bolts and slots on the rear frame, sliding the main frame onto the rear frame as shown.

For best results, start with either side and repeat for the other side.

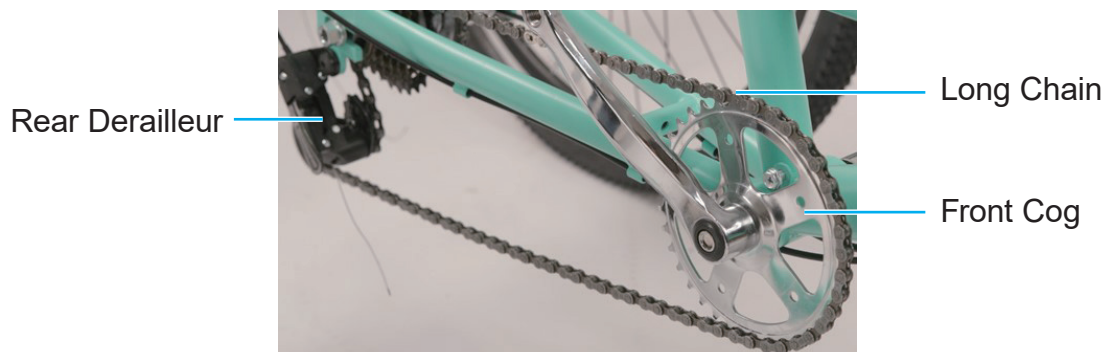


4. Partially retighten all the nuts on the bolts that connect the two frames by hand.



Installing the Chains

1. Fit the long chain around the front cog and the rear derailleur's pulleys, arranging it in an S shape.



Assembly

2. Find the short chain (10) and its joint parts (32) including a link, plate, and clip.



Link

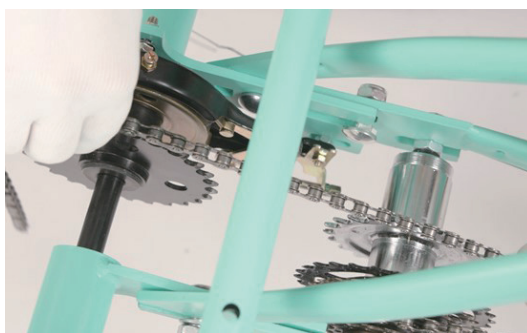


Plate



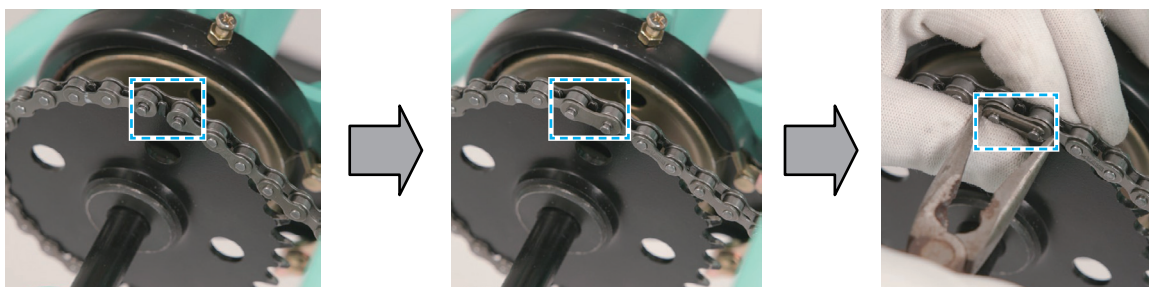
Clip

3. Place the short chain around the two rear freewheels.

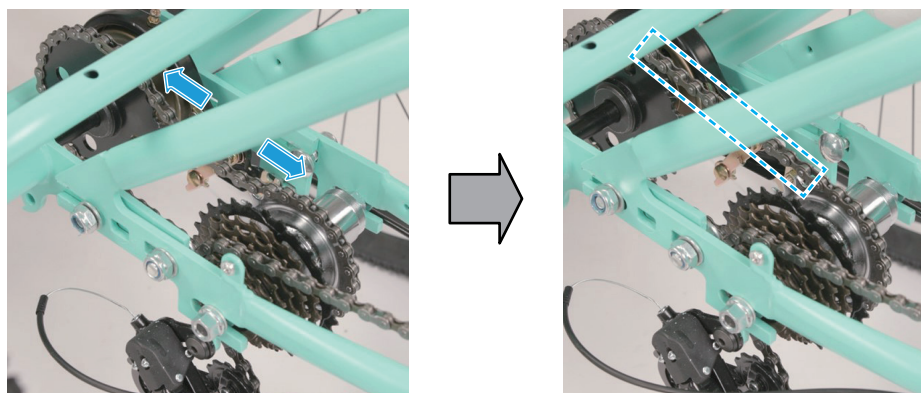


4. Use the link and plate to join both ends of the chain, jamming the link pins into the slots.

5. Push the clip onto the link pins. Use pliers (not included) if needed.

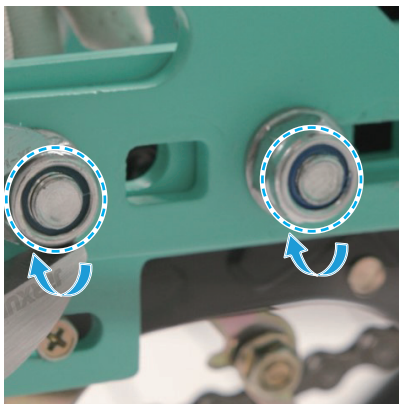


6. Pull the rear and main frames in opposite directions until the short chain becomes straight but **NOT** overtight.



Assembly

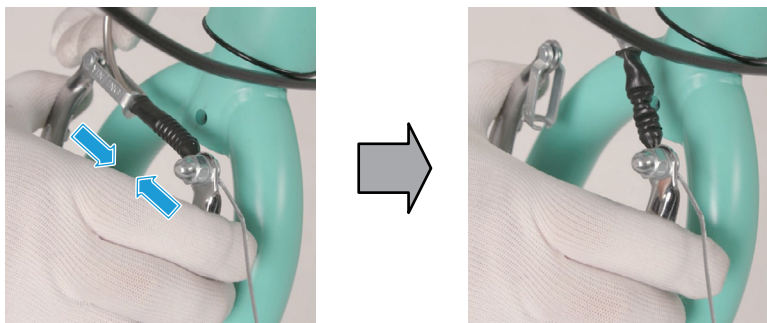
7. Completely tighten the nuts on the bolts that connect the two frames with the 17 mm wrench (26).



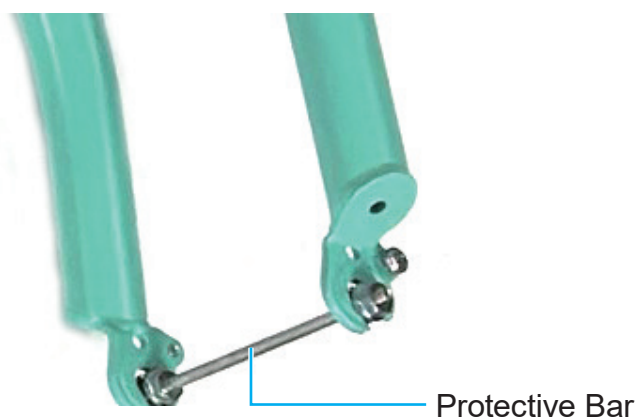
8. Check that both chains move freely by rotating the adjacent crank arm.

Installing the Front Wheel

1. Press and disconnect the front V-brake on the main frame's front fork.



2. Loosen the bolts on the protective bar between the front fork with the 13 mm wrench (25) and then remove the bar from the fork.



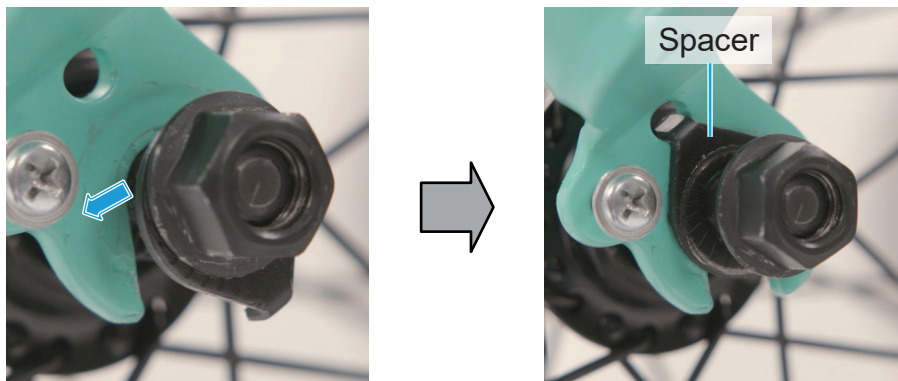
3. Loosen the nuts on the front wheel hub by hand.

Assembly

4. Place the front wheel into the front fork, allowing the fork to catch its axle snugly between the spacer and its hub.



5. Push the spacer inwards to make it fit tightly with the fork.



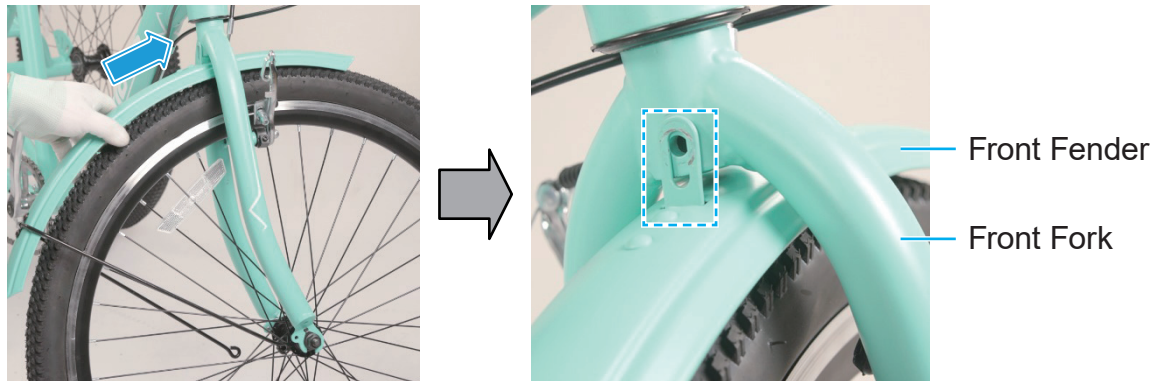
6. Retighten the nut on each side with the 15 mm wrench (25) to lock the front wheel in place.



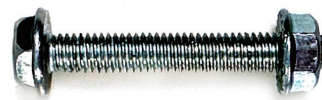
Assembly

Installing the Front Fender and Stay

1. Pass the front fender (6) through the front fork, aligning its slot with the hole on the top of the front fork.

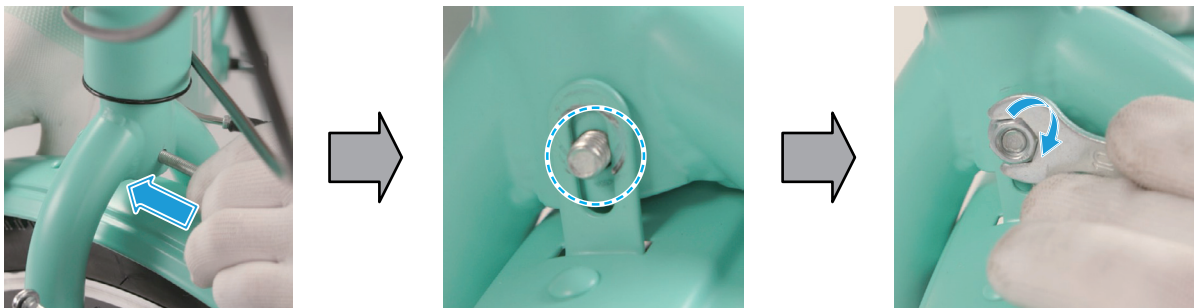


2. Remove the nut from a M6*40 mm bolt (30).



M6*40 mm Bolt with Nut

3. Insert the bolt through the hole and slot.
4. Replace the nut to the bolt, and tighten them with the 10 mm wrench (24) and the Phillips screwdriver (21) to secure the front fender to the front fork.

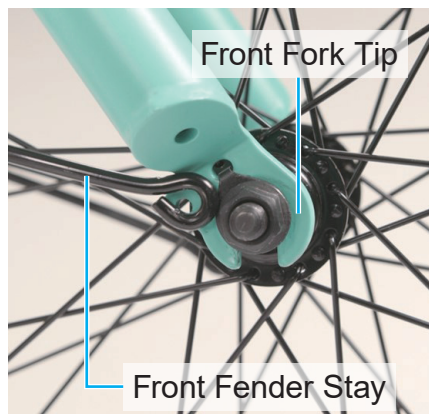


5. Loosen and remove the bolts on the front fork tips with the Phillips screwdriver. Place them nearby.

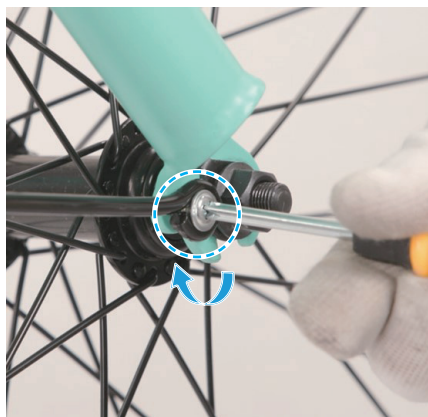


Assembly

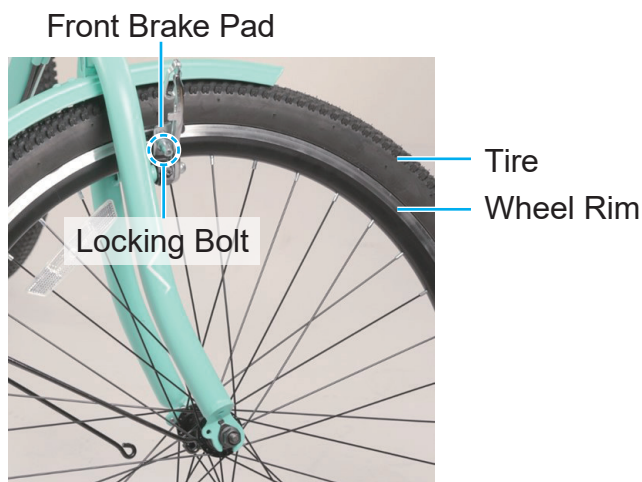
6. Align the slots of the front fender stay with the holes on the front fork tips.



7. Replace and tighten the removed bolts with the Phillips screwdriver to secure the stay to the front fork.

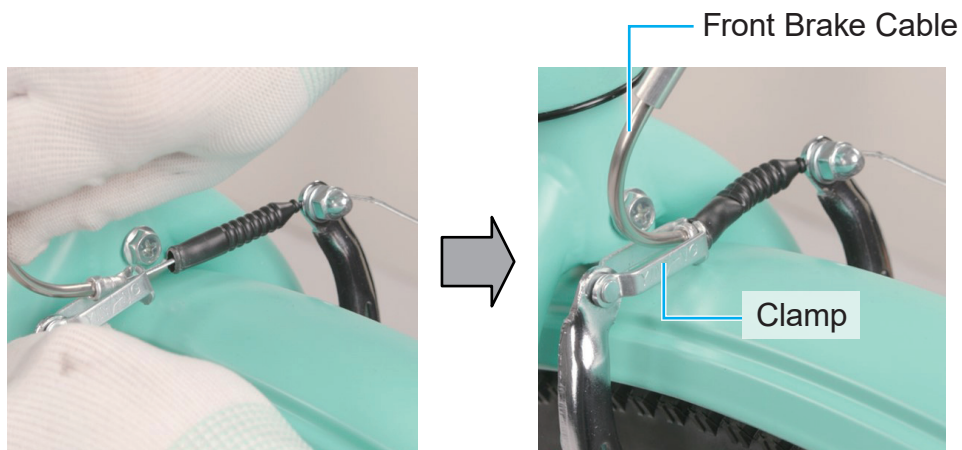


8. Check that the pads on both brake arms are well aligned with the front wheel rim.
If they are not, loosen the locking bolts using the 5 mm hex wrench (22), correct such alignment for both pads, and retighten the bolts. **DO NOT** allow the brake pads to rub against the tire.



Assembly

9. Reconnect the V-shaped front brake on the main frame's front fork, ensuring that the cable is securely held in the clamp as shown.



Installing the Chain Guard

1. Loosen and remove the 2 bolts from the guard support near the crankset and rear freewheels with the Phillips screwdriver. Place them nearby.

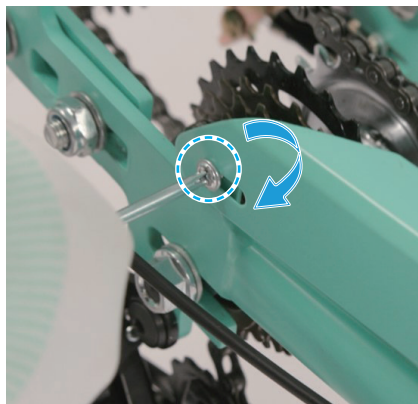
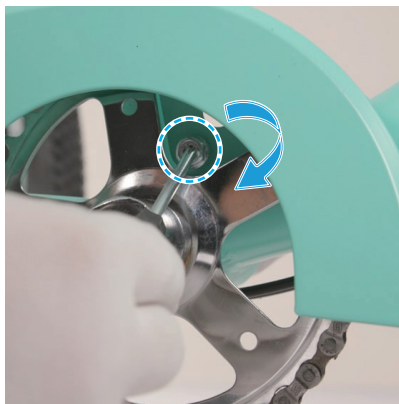


2. Fit the chain guard (11) onto its supports and over the front long chain as shown.



Assembly

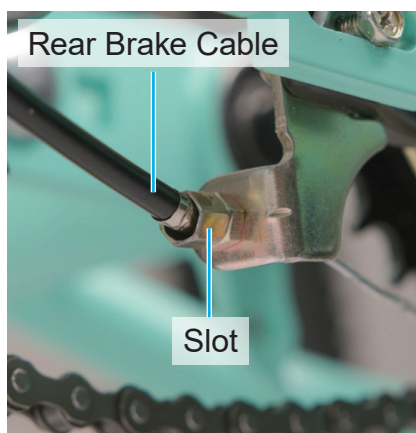
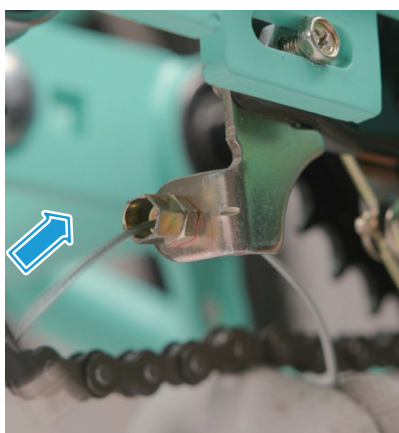
3. Aligning the bolt holes, replace and tighten the removed bolts with the Phillips screwdriver to secure the guard.



4. Rotate the right crank arm to confirm that the chain does **NOT** rub against the guard. If it does, readjust the guard so that the chain can move freely.

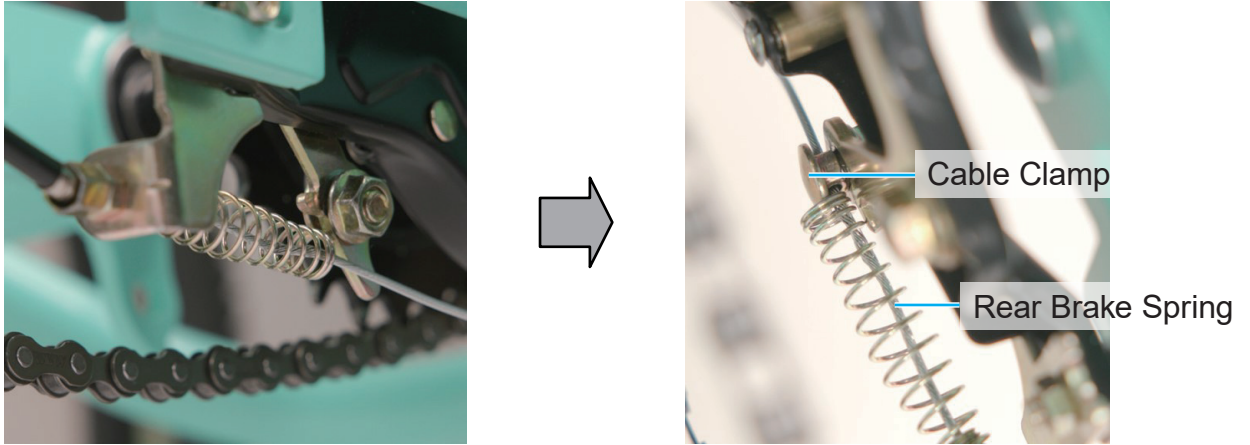
Feeding the Rear Brake Cable

1. Feed the rear brake cable from the right brake lever through the slot on the rear brake caliper.

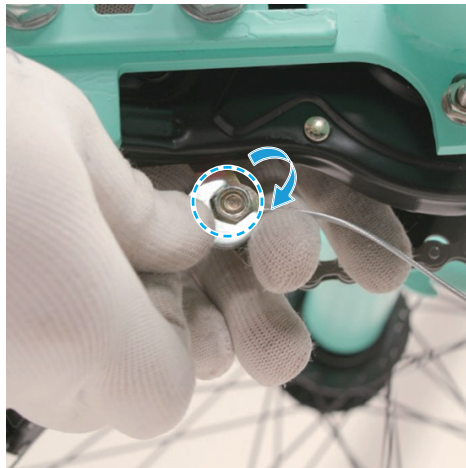


Assembly

2. Feed the rear brake cable through the rear brake spring (31) and the cable clamp.



3. Ensure this rear brake cable is in a tight state, and tighten the locking nut of the cable clamp with the 10 mm wrench.

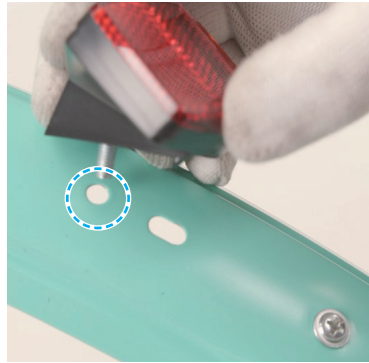


4. Test the rear brake by pressing the right brake handle and pushing the tricycle forward.

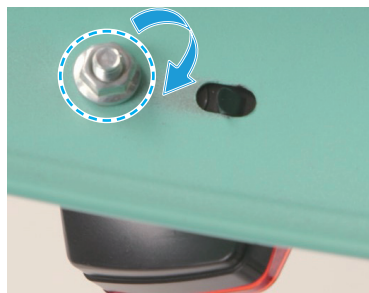
Assembly

Installing the Rear Reflectors

1. Unscrew the nuts from the bolts of the rear reflectors (19).
2. Attach either reflector to the hole on one of the rear fenders (14) using their bolts.



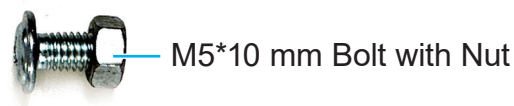
3. Replace and tighten the nut with the 8 mm wrench (24) to secure the rear reflector.



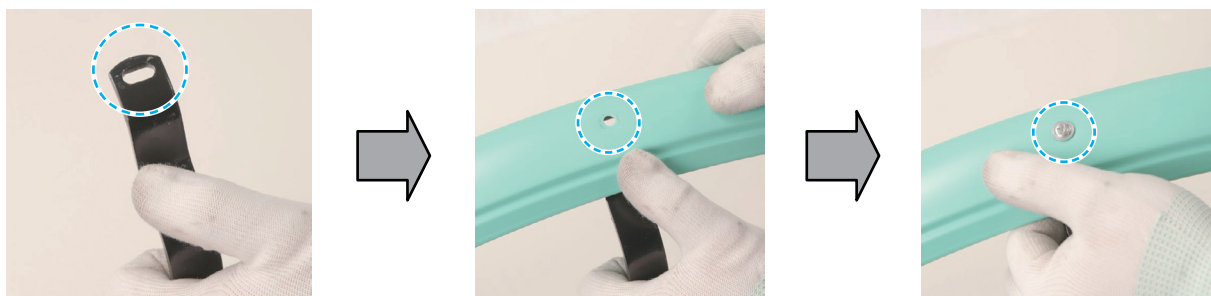
4. Repeat steps 2–3 to install the other rear reflector.

Installing the Rear Fenders

1. Remove the nuts from six M5*10 mm bolts (28).



2. Align either rear fender with one of the rear fender stays (15) in the position as shown.
3. Attach three of the bolts to connect the rear fender to its stay.



Assembly

4. Replace three nuts to these bolts and tighten them with the Phillips screwdriver and the 8 mm wrench.



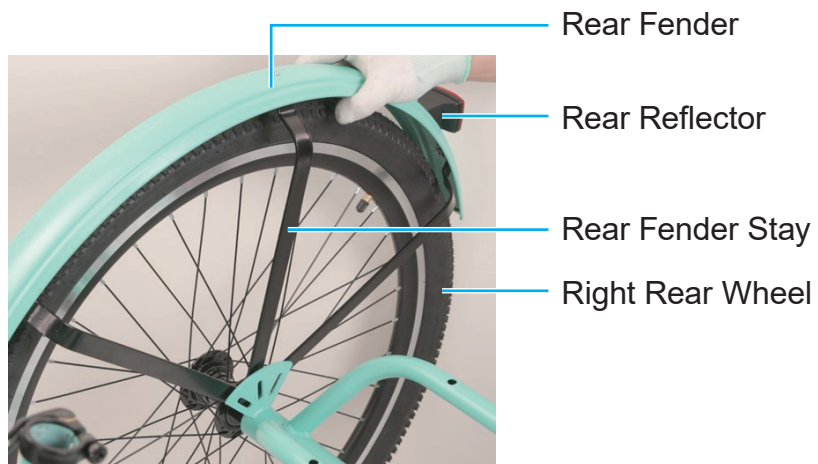
5. Repeat steps 2–5 for the other rear fender and stay.

Installing the Rear Fender Stays

1. Remove the nuts from four M6*20 mm bolts (29).

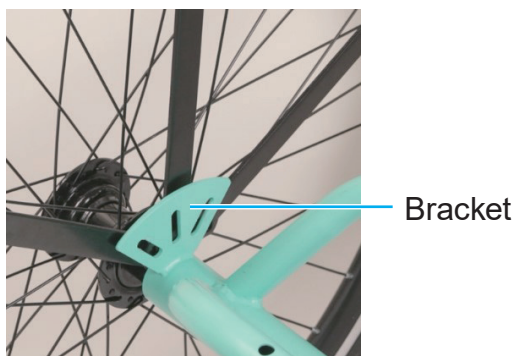


2. Place the appropriate rear fender over the right rear wheel, with its reflector facing backwards.
3. Align the rear fender stay with the right side bracket on the rear frame, taking care **NOT** to allow the stay to touch the tire or wheel rim.



Assembly

4. Attach the two of the bolts to connect the stay to the bracket.



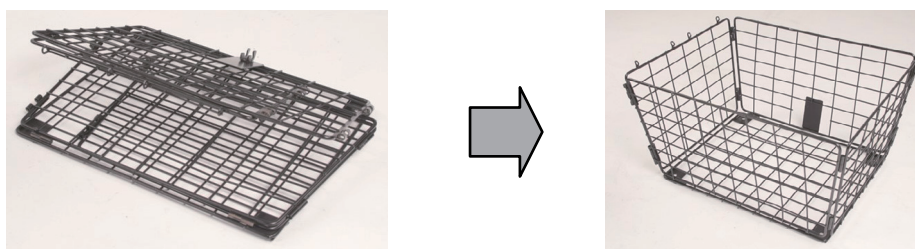
5. Replace two nuts onto these bolts and tighten them with the Phillips screwdriver and 10 mm wrench.



6. Install the other rear fender over the left rear wheel following the same steps.

Assembling the Rear Basket

1. Unfold the rear basket frame (17).
2. Align the slots on the edge of each side.

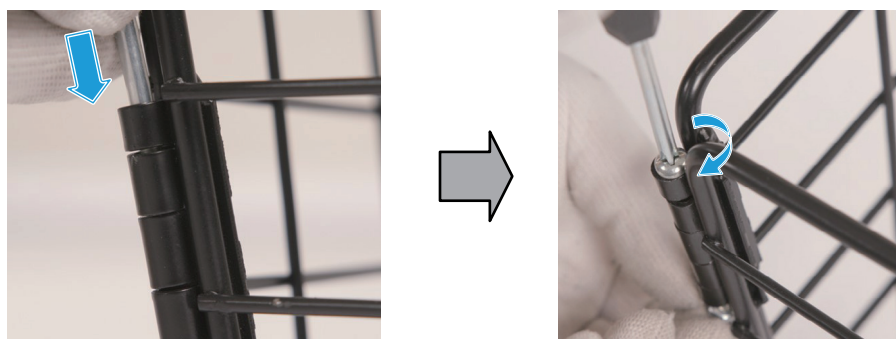


3. Remove the nuts from four M5*60 mm bolts (34).



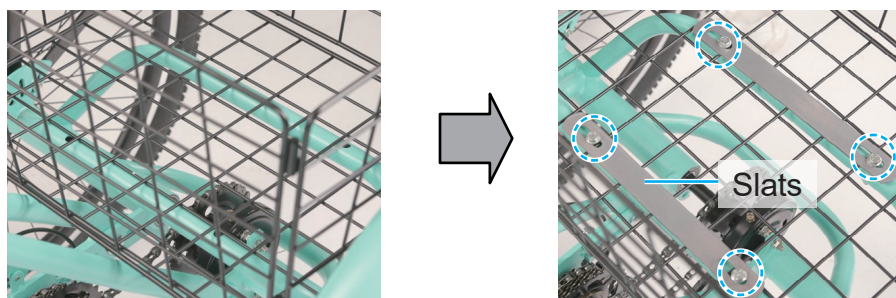
Assembly

4. Insert the four M5*60 mm bolts into the slots.
5. Replace the nuts and tighten the bolts and nuts with the Phillips screwdriver and the 8 mm wrench to secure the sides of basket.

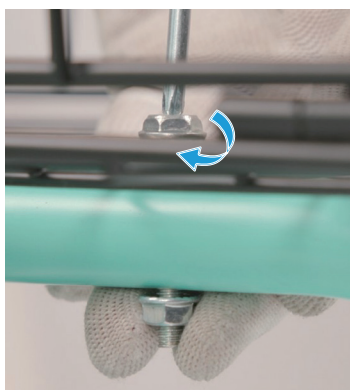


Installing the Rear Basket

1. Fit the rear basket onto the rear frame.
2. Remove the nuts from four M6*40 mm bolts.
3. Place the slats (18) into the basket where their bolt holes are aligned with those on the rear frame.
4. Attach the four of the bolts to connect the slats to the rear frame.

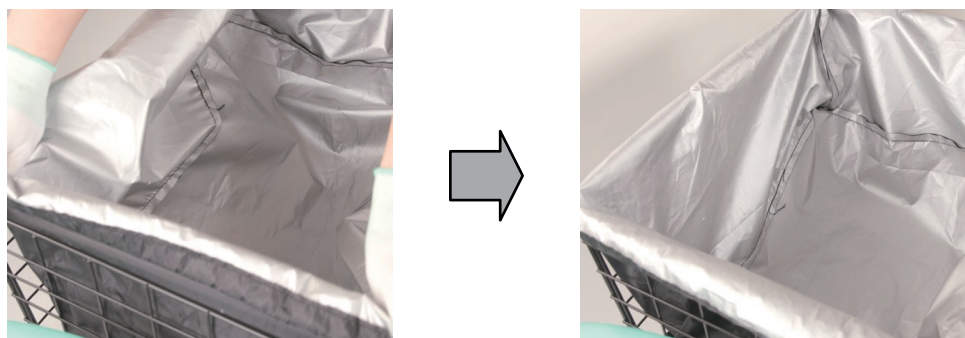


5. Replace four nuts onto these bolts and tighten them with the Phillips screwdriver and 10 mm wrench.



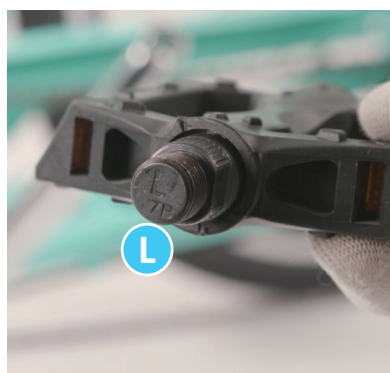
Assembly

6. Unfold the basket liner and fit it into the basket.

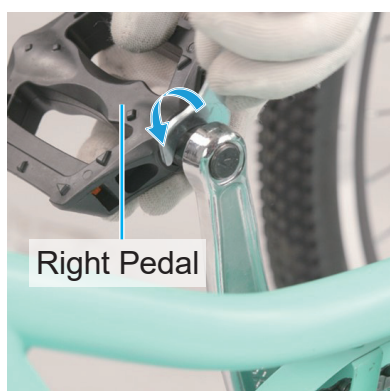
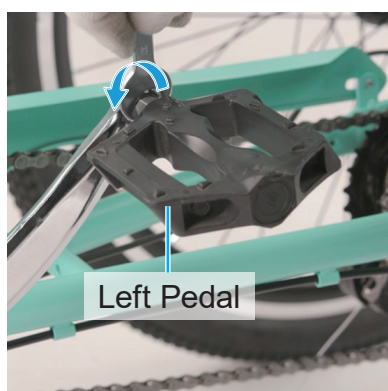


Installing the Pedals

Note: The two pedals (12) **ARE** different and should **NOT** be mixed up. The right pedal is marked with **R** and the left with **L**.



1. Attach the pedals to the crank arms on the appropriate side, screwing them into place by hand.
2. Tighten their locking nuts with the 15 mm wrench (25).

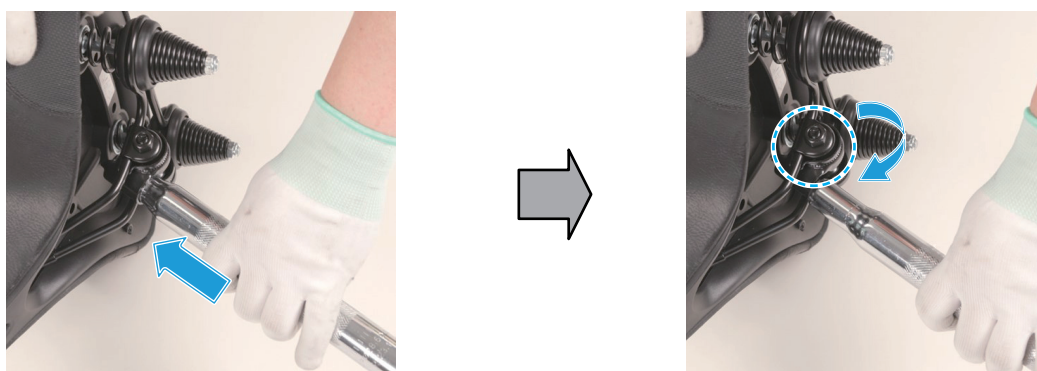


3. Test that the chain turns smoothly while using the pedals, adjusting as needed.

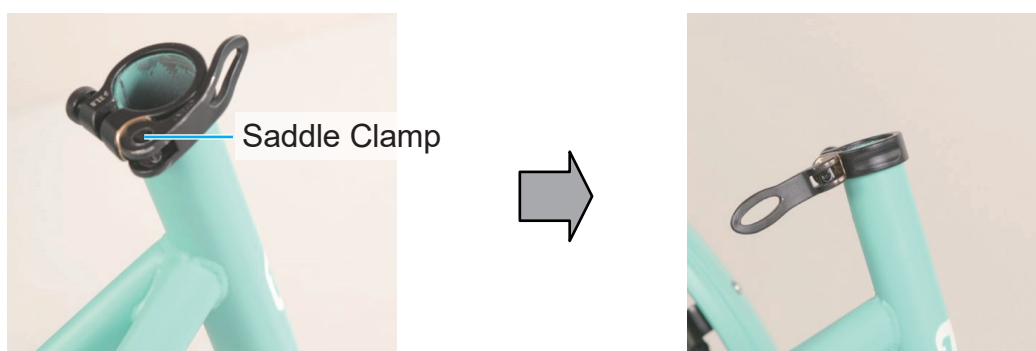
Assembly

Installing the Saddle

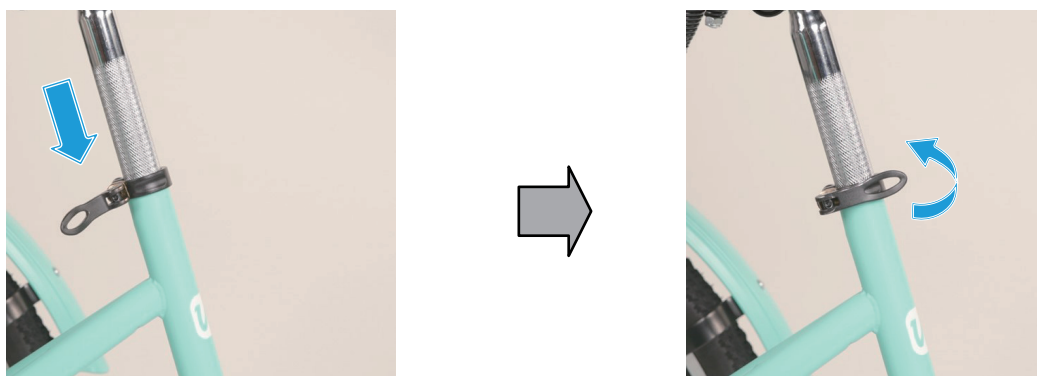
1. Feed the saddle post (9) into the central hole underneath the saddle (8).
2. Tighten the locking nuts on both sides using the 14 mm wrench (26) until the saddle is securely fixed to its post.



3. Open the saddle clamp on the top of the seat tube using its locking handle.



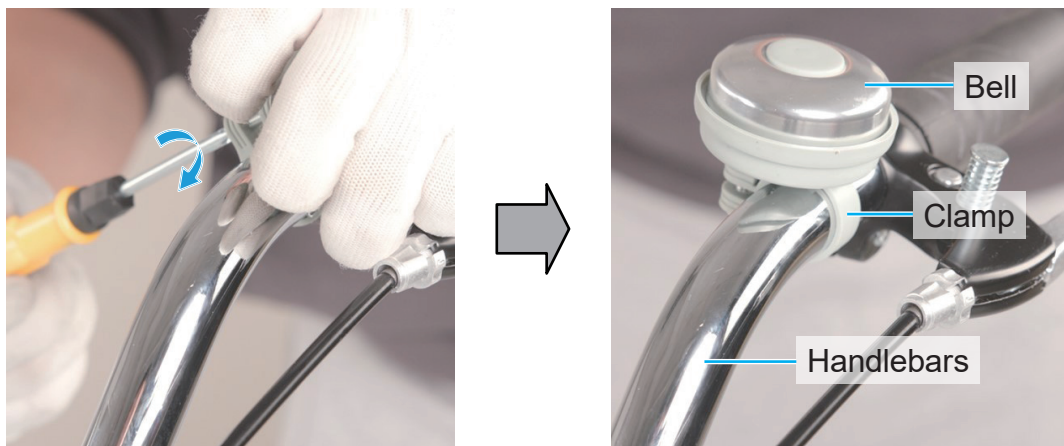
4. Insert the saddle post into the seat tube until your preferred height is reached.
5. Close the saddle clamp by pressing its locking handle towards the seat tube.



Assembly

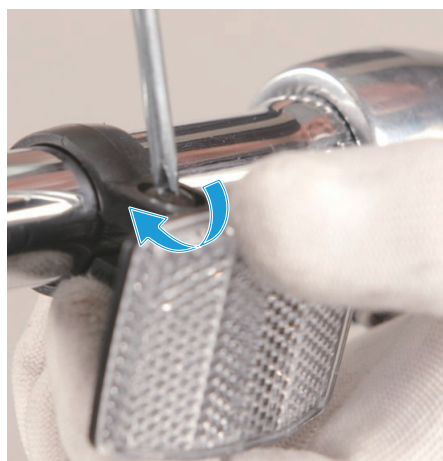
Installing the Bell

1. Remove the bolt from the clamp of the bell (2) with the Phillips screwdriver.
2. Fit the bell onto a convenient place on the handlebars using its clamp.
3. Replace and tighten the bolt with the Phillips screwdriver.



Installing the Front Reflector

1. Unscrew the bolt from the clamp of the front reflector (3).
2. Place the front reflector onto a convenient position on the handlebars using its clamp.
3. Replace and tighten the removed bolt until the front reflector is locked into place.



Assembly

Post-Assembly Checks

Remember to take the following post-assembly actions to ensure optimal functionality for a safe and enjoyable riding experience. Failure to do so may result in unpleasant riding, property damage, and personal injury.

- Thoroughly check that **ALL** components and fasteners **ARE** undamaged and securely attached.
Pay special attention to the frame connections, handlebars, chains, pedals, and wheels.
- Test smooth operation by rotating the wheels, steering, and pedaling.
Make sure that **ALL** movements **ARE** fluid and free from any unusual resistance.
- Inspect the front and rear brakes by pressing their levers while pushing the tricycle forward.

Be sure that **BOTH** brake levers can effectively engage the brake systems, facilitating prompt and responsive deceleration and bringing the tricycle to a smooth and controlled stop.

Speed Gearing Adjustment

The Shimano gear shifter on the right handlebar uses a twist grip to control the 7 rear cogs, providing 7-speed gearing for manual riding.

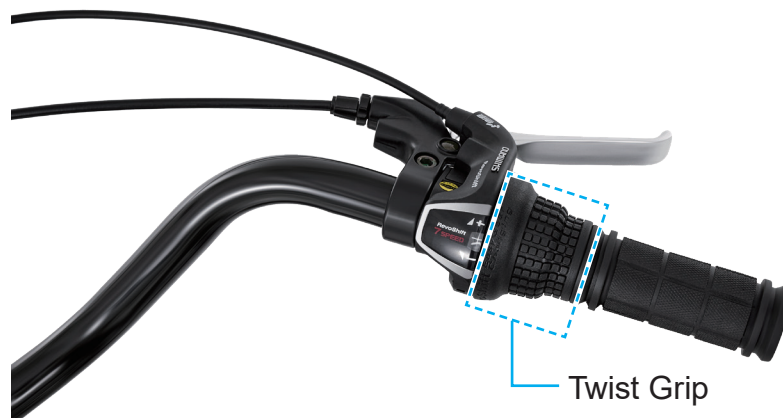
Larger gear numbers represent smaller rear cogs and higher speeds.

Smaller gear numbers refer to larger rear cogs and lower speeds.

To upshift, turn the twist grip forwards (toward +).

To downshift, turn the twist grip backwards (toward -).

Be sure that your tricycle's crank is turning while using the shifter to adjust the long chain on the cogs.



Maintenance

- Check the parts of the tricycle for any looseness, stiffness, wear, or damage after each use. Tighten, repair, or replace any problematic parts before further use.

 **Warning**

***ONLY** use identical replacements.*

- The exterior of the tricycle can be cleaned with a soft damp cloth.

 **Caution**

***DO NOT** use abrasives or caustic chemicals.*

- Lubricate the chain and any moving part using a standard bike lubricant as needed.
- If the tricycle will not be used for an extended period of time, store in a cool dry place away from direct sunlight and inaccessible to children.

Contact Us

Thank you for choosing our products! If you have any questions or comments, contact us at contact@b2ccsonline.com and we'll resolve your issue ASAP!

For a .pdf copy of the latest version of these instructions, use the appropriate app on your smartphone to scan the QR code to the right.

